



# MAGNETIC TRANSFORMER

## 300W

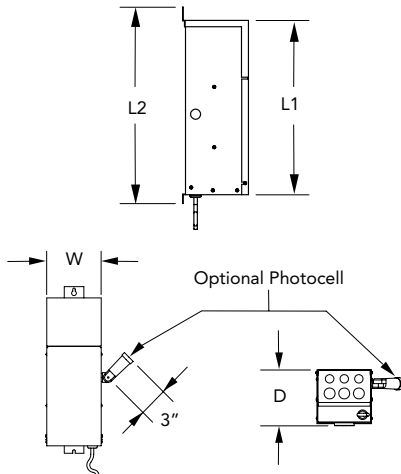
### HIGHLIGHTS

- Suitable for LED
- 300 watts, 120V primary to 12VAC secondary magnetic
- Rated for outdoor surface mount, minimum of 12" above finished grade with the wire connection terminals facing down
- Dimmable by using a magnetic low voltage dimmer switch

#### Specifications

L1:	TM300: 16-1/2" (419 mm)
L2:	TM300: 17-1/2" (445 mm)
Width:	TM300: 8" (203 mm)
Depth:	TM300: 5-1/2" (140 mm)
Weight	up to 32 lbs (14.6 kg)

### DIMENSIONS



### ORDERING INFORMATION

EXAMPLE: TM300 120 PC

Series	Voltage	Photo Control
TM300 Transformer, Multi-Tap Magnetic 300W	120 120 Volt ac	PC Photo Cell

---

## SPECIFICATIONS AND FEATURES

---

**MATERIAL:** All STAINLESS STEEL construction. Magnetic transformer completely encased in waterproof potting compound.

**VOLTAGE:** 120volt.

**FINISHES:** Transformers come in brushed stainless only. Custom "wet" paint finishes are available (consult factory for more information).

**FEATURES:** "TM" series transformers have multi-tap secondary output, 12V, 13V, 14V, and 15V. Each 300VA circuit has an on/off switch to reset internal circuit breaker in case of overload. All housings feature five "knock-outs" in bottom cover plate (two 1/2", two 3/4", and one 1-1/2"). Housing is built to "NEMA 3R" specification. Can be dimmed with commonly available low voltage magnetic dimming equipment. 120V Transformers come with a 4' Cord w/plug.

**WARRANTY:** 1-year limited warranty. Complete warranty terms located at: [www.acuitybrands.com/support/warranty/terms-and-conditions](http://www.acuitybrands.com/support/warranty/terms-and-conditions)

Consult factory for details.

**NOTE:** Actual performance may differ as a result of end-user environment and application. Specifications subject to change without notice.