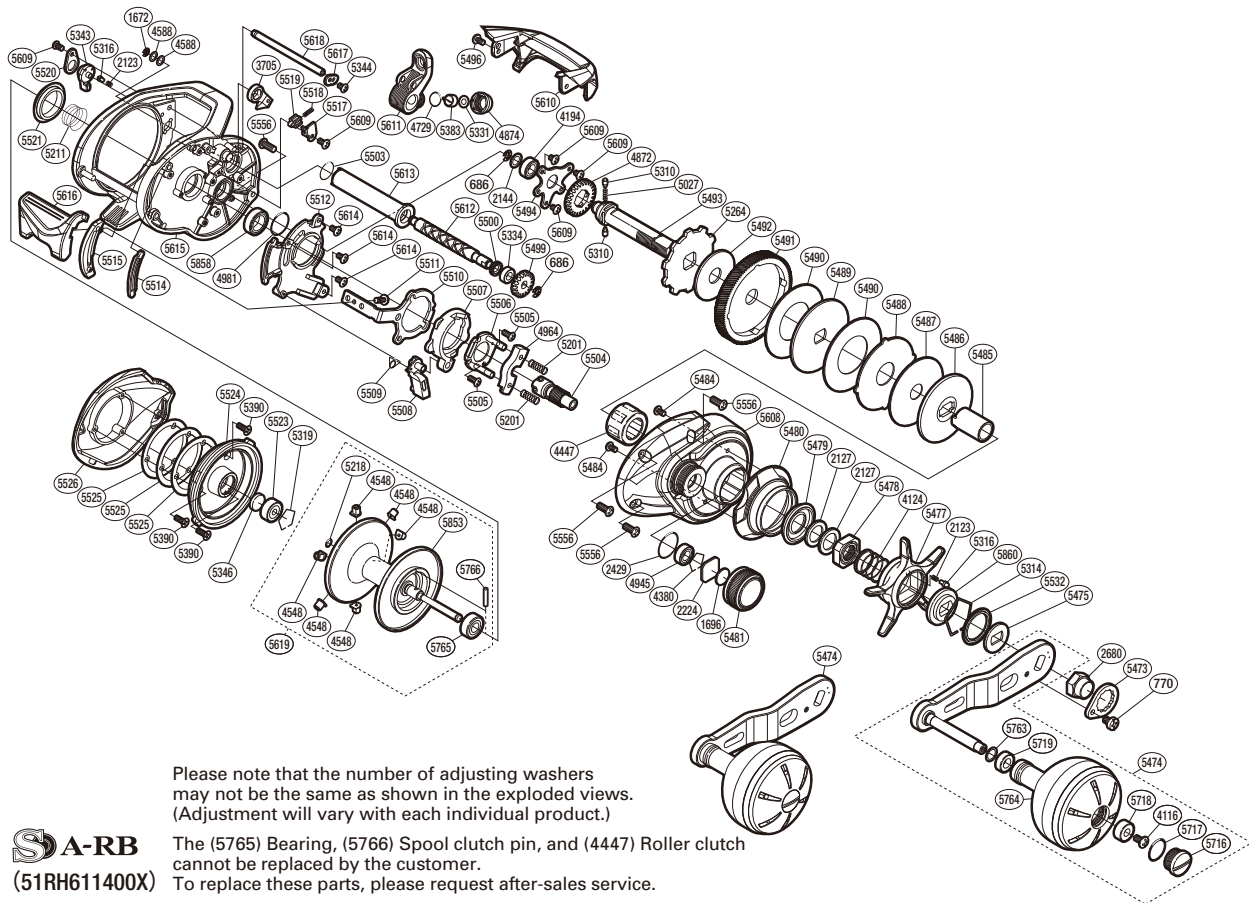


# SHIMANO

## TRAX

## TRX-400HG



| Part No. | Description              | Part No. | Description               | Part No. | Description               |
|----------|--------------------------|----------|---------------------------|----------|---------------------------|
| BNT0686  | E Lock                   | BNT5346  | Spacer B                  | BNT5517  | Retention Spring Retainer |
| BNT0770  | Screw                    | BNT5383  | Line Guide Pawl           | BNT5518  | Clutch Retention Spring   |
| BNT1672  | E Lock                   | BNT5390  | Screw                     | BNT5519  | Clutch Retention Pin      |
| BNT1696  | Cast Control Spacer (B)  | BNT5473  | Handle Nut Plate          | BNT5520  | Cam Lever Retainer        |
| BNT2123  | Click Spring             | BNT5474  | Handle Assembly           | BNT5521  | Frame Center Seal         |
| BNT2127  | Star Drag Spacer         | BNT5475  | Drive Shaft Shield        | BNT5523  | Ball Bearing              |
| BNT2144  | Drive Shaft Washer       | BNT5477  | Star Drag                 | BNT5524  | Dial Case                 |
| BNT2224  | Spool Tension Spacer (A) | BNT5478  | Star Drag Nut             | BNT5525  | Washer                    |
| BNT2429  | O Ring                   | BNT5479  | Roller Clutch Water Proof | BNT5526  | Left Side Plate           |
| BNT2680  | Handle Nut               | BNT5480  | Clutch Button Attachment  | BNT5532  | Star Drag Seal            |
| BNT3705  | Anti-Reverse Pawl        | BNT5481  | Cast Control Cap          | BNT5556  | Screw                     |
| BNT4116  | Screw                    | BNT5484  | Screw                     | BNT5608  | Right Side Plate          |
| BNT4124  | Star Drag Spring         | BNT5485  | Roller Clutch Inner Tube  | BNT5609  | Screw                     |
| BNT4194  | Ball Bearing             | BNT5486  | Key Washer                | BNT5610  | Level Wind Protector      |
| BNT4380  | Retainer                 | BNT5487  | Drag Washer               | BNT5611  | Line Guide                |
| BNT4447  | Roller Clutch Bearing    | BNT5488  | Eared Washer              | BNT5612  | Worm Shaft                |
| BNT4548  | Brake Collar             | BNT5489  | Key Washer                | BNT5613  | Level Wind Guard          |
| BNT4588  | Washer                   | BNT5490  | Drag Washer               | BNT5614  | Screw                     |
| BNT4729  | O Ring                   | BNT5491  | Drive Gear                | BNT5615  | Frame                     |
| BNT4872  | Idle Gear                | BNT5492  | Drag Washer               | BNT5616  | Clutch Lever              |
| BNT4874  | Pawl Cap                 | BNT5493  | Drive Shaft               | BNT5617  | Stabilizer Bar Retainer   |
| BNT4945  | Ball Bearing             | BNT5494  | Drive Shaft Retainer      | BNT5618  | Stabilizer Bar            |
| BNT4964  | Yoke                     | BNT5496  | Screw                     | BNT5619  | Spool Assembly            |
| BNT4981  | O Ring                   | BNT5499  | Idle Gear                 | BNT5716  | Handle Knob Seal          |
| BNT5027  | Idle Gear Spring         | BNT5500  | Worm Shaft Seal           | BNT5717  | O Ring                    |
| BNT5201  | Yoke Spring              | BNT5503  | O Ring                    | BNT5718  | Handle Knob Bushing A     |
| BNT5211  | Bearing Pressure Spring  | BNT5504  | Pinion Gear               | BNT5719  | Handle Knob Bushing       |
| BNT5218  | O Ring                   | BNT5505  | Screw                     | BNT5763  | Washer                    |
| BNT5264  | Anti-Reverse Ratchet     | BNT5506  | Clutch Cam Retainer       | BNT5764  | Handle Knob               |
| BNT5310  | Idle Gear Pin            | BNT5507  | Clutch Cam                | BNT5765  | Ball Bearing              |
| BNT5314  | Click Plate Retainer     | BNT5508  | Clutch Pawl               | BNT5766  | Spool Clutch Pin          |
| BNT5316  | Click Pin                | BNT5509  | Clutch Pawl Spring        | BNT5853  | Spool                     |
| BNT5319  | Bearing Retainer         | BNT5510  | Clutch Plate              | BNT5858  | Ball Bearing              |
| BNT5331  | Spacer                   | BNT5511  | Screw                     | BNT5860  | Star Drag Click Plate     |
| BNT5334  | Bushing                  | BNT5512  | Clutch Guard              |          |                           |
| BNT5343  | Side Plate Cam Lever     | BNT5514  | Clutch Button Seal        |          |                           |
| BNT5344  | Screw                    | BNT5515  | Clutch Bar Guide          | BNT4692  | B-100 Oil (Accessory)     |