



ANGLE      STRAIGHT      EXTENSION

## SUPPLY STOP WITH EXTENSION (SWT X COMP)

- cUPC listed
- Lead Free

### Listings & Certifications

Products are in compliance with the following code(s):

- Uniform Plumbing Code (UPC®)
- National Plumbing Code of Canada

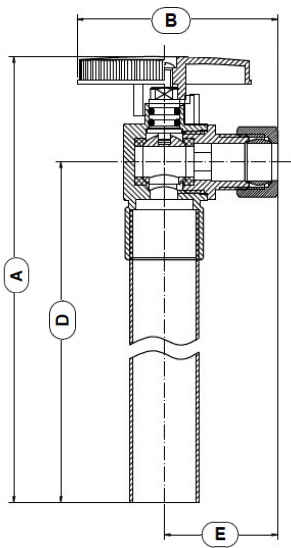
Products are in compliance with the following standard(s):

- ASME A112.18.1-2012/CSA B125.1-12
- NSF61-9

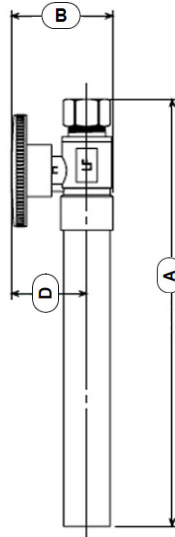


### QUARTER TURN

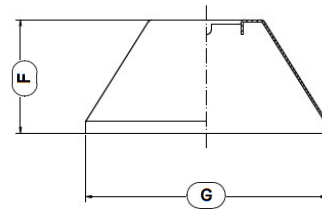
PART NO.	FINISH	TYPE	INLET SIZE	OUTLET SIZE	A	B	C	D	E	F	G
S10423	Chrome	ANGLE	1/2"	3/8"	6-3/4"	2"		5-3/4"	1-1/8"	1-3/16"	2-7/16"
S10424	Chrome	STRAIGHT	1/2"	3/8"	6-3/4"	1-3/8"				1-3/16"	2-7/16"



ANGLE



STRAIGHT



EXTENSION