

Crometta
Showerpipe without Shower Components
 Finishes : **chrome** Part no. : **04868000**

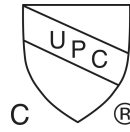


Description

Features

- Height-adjustable hand shower holder
- Integrated volume control/diverter for 2 functions
- Outlets may not be operated simultaneously
- Exposed installation
- Thermostatic cartridge
- Built-in service stops
- Does not include: Showerhead, handshower
- MASS/Massachusetts

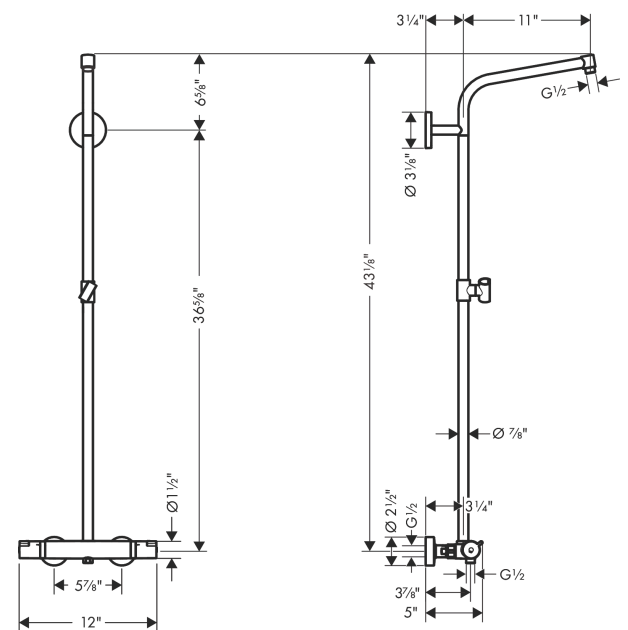
Compliance



Product image



Scale drawing

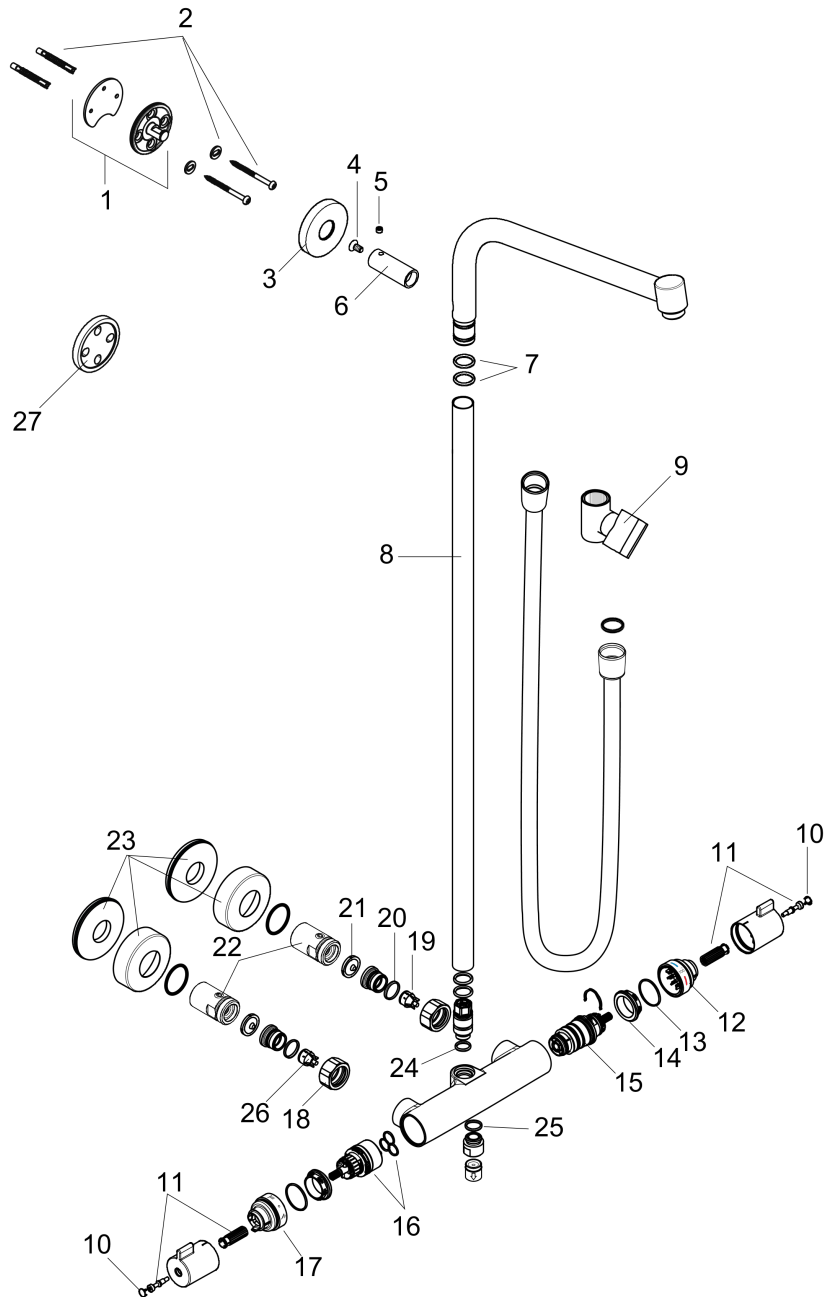


Crometta
Showerpipe without Shower Components
 Finishes : **chrome** Part no. : **04868000**



Exploded drawing

Year of production: >01/20



Crometta
Showerpipe without Shower Components
 Finishes : **chrome** Part no. : **04868000**



Spare parts list

Year of production: >01/20

Pos.	Description	Part no.	PC	PU
1	wall flange	95688000	0	1
2	mounting set	96179000	0	1
3	escutcheon Ø 60 mm	95692000	0	1
4	screw	92137000	0	1
5	hollow set screw M6x5	98447000	0	1
6	sleeve	92166000	0	1
7	O-ring 15x2,5	98131000	0	1
8	pipe 900 mm	92400000	0	1
9	support, assy	97651000	0	1
10	cover cap	95433000	0	1
11	handle fixing set	95843001	0	1
12	safety set for temperature control	95839001	0	1
13	O-ring 26x1,5	98390000	0	1
14	nut	98913000	0	1
15	thermostat cartridge	98282000	0	1
16	shut off unit with selector	98283000	0	1
17	stop ring for flow control	95927000	0	1
18	set of nuts	96157000	0	1
19	non return valve	96737000	0	1
20	O-ring 17x1,5	98137000	0	1
21	filter packing	96922000	0	1
22	isolation valve	98341000	0	1
23	escutcheon	98340000	0	1
24	O-ring 12x2,25	98382000	0	1
25	O-ring 14x2	98129000	0	1