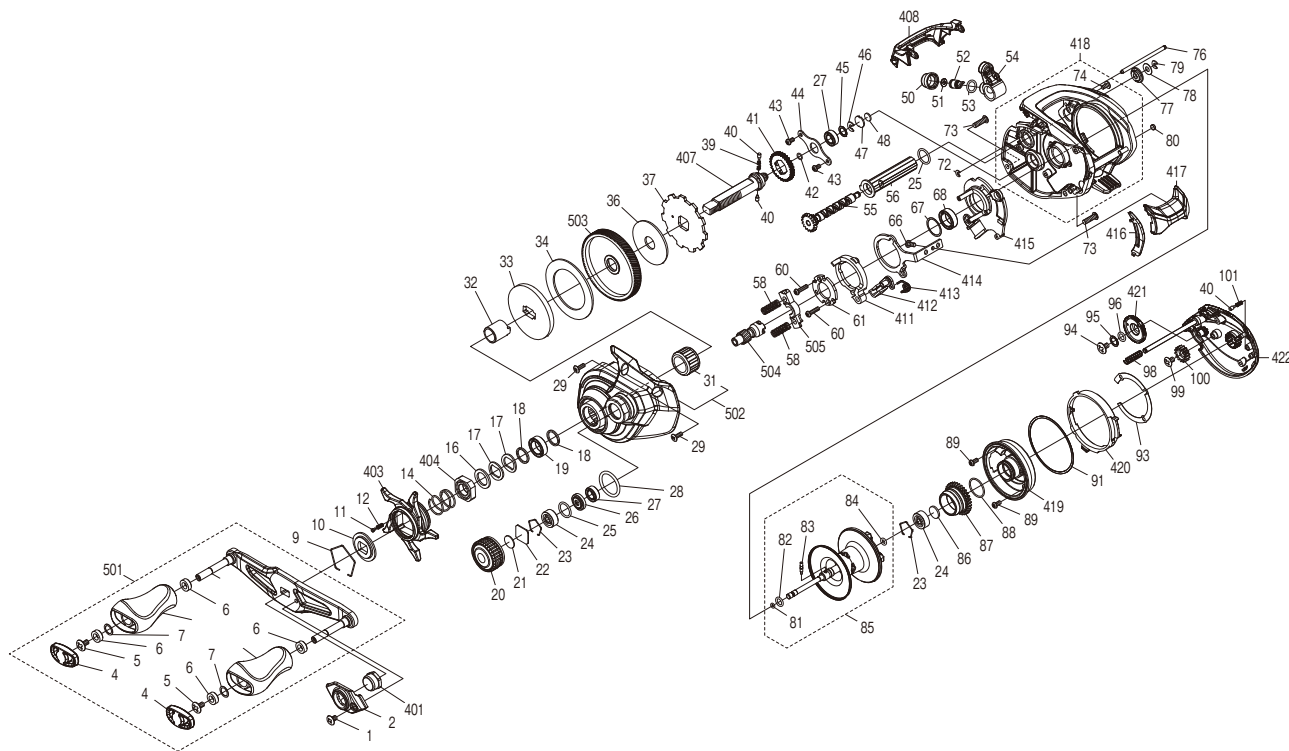


# SHIMANO

## CURADO

## CU201HGM



(51RL624A31X)

#	Part No.	Description	#	Part No.	Description	#	Part No.	Description
1	10DV5	Screw	42	108WU	O Ring	87	101DR	Brake Ring Gear
2	144EC	Handle Nut Plate	43	10S3Y	Screw	88	100GW	O Ring
4	10SS2	Handle Knob Seal	44	109T1	Drive Shaft Retainer	89	10L1Q	Screw
5	10LFA	Screw	45	10G6D	Washer	91	140UF	Washer
6	10PXZ	Bushing	46	105NK	E Lock	93	144EL	Washer
7	104FH	Washer	47	143CG	Metal Spacer	94	103LE	Screw
9	10KXW	Click Plate Retainer	48	14079	Rubber Spacer	95	10G6D	Washer
10	10J26	Star Drag Click Plate	50	10FJB	Pawl Cap	96	108WS	O Ring
11	10MFC	Click Pin	51	10CFU	Washer	98	10KNH	Spring
12	10BT2	Click Spring	52	10BHQ	Line Guide Pawl	99	103L7	Screw
14	10A70	Star Drag Spring	53	108WQ	O Ring	100	10CLF	Idle Gear
16	10J1P	Star Drag Spacer	54	10R51	Line Guide Pawl Holder Assembly	101	10GQZ	Click Spring
17	109F5	Washer	55	144EG	Worm Shaft	401	1007V	Handle Nut
18	100SE	Washer	56	13YNV	Level Wind Guard	403	144ND	Star Drag
19	105BK	Ball Bearing	58	100U9	Yoke Spring	404	10A3U	Star Drag Nut
20	13YNS	Cast Control Cap	60	10LV0	Screw	407	144NE	Drive Shaft
21	10896	Cast Control Spacer (B)	61	100US	Clutch Cam Retainer	408	144NF	Level Wind Protector
22	1085F	Cast Control Spacer (A)	66	10559	Screw	411	100W0	Clutch Cam
23	1054D	Bearing Retainer	67	10190	Washer	412	1003W	Clutch Pawl Assembly
24	105C3	Ball Bearing	68	10EX8	Ball Bearing	413	104CQ	Clutch Pawl Spring
25	101GT	O Ring	72	105NB	E Lock	414	144NK	Clutch Plate
26	100BL	Bearing Spacer	73	100UV	Screw	415	144N6	Clutch Guard Assembly
27	105BP	Ball Bearing	74	10E8N	Screw	416	144NG	Clutch Bar Guide B
28	108WK	O Ring	76	10E2G	Stabilizer Bar	417	144NH	Clutch Button
29	10LCY	Screw	77	100G7	Level Wind Guard Bushing	418	144N7	Frame Assembly
31	1005E	Roller Clutch Bearing	78	10FJZ	Washer	419	144N8	Brake Case
32	100BM	Roller Clutch Inner Tube	79	105NC	E Lock	420	144NJ	B Side Plate Cam Lever
33	100BK	Key Washer	80	108PY	Washer	421	10263	Brake Dial
34	10SSF	Drag Washer	81	100BH	O Ring	422	144N9	B Side Plate Assembly
36	1023U	Drag Washer	82	10TM7	O Ring	501	144NC	Handle Assembly
37	13YNT	Anti-Reverse Ratchet	83	10MD0	Spool Clutch Pin	502	144NA	A Side Plate Assembly
39	10JDY	Idle Gear Spring	84	10EZ7	O Ring	503	10EB5	Drive Gear
40	10HJG	Idle Gear Pin	85	144EB	Spool Assembly	504	10EB9	Pinion Gear
41	101K8	Idle Gear A	86	10EX5	Bearing Spacer	505	1001Q	Yoke

Please note that the number of adjusting washers may not be the same as shown in the exploded views.  
(Adjustment will vary with each individual product.)

(231113)\_002