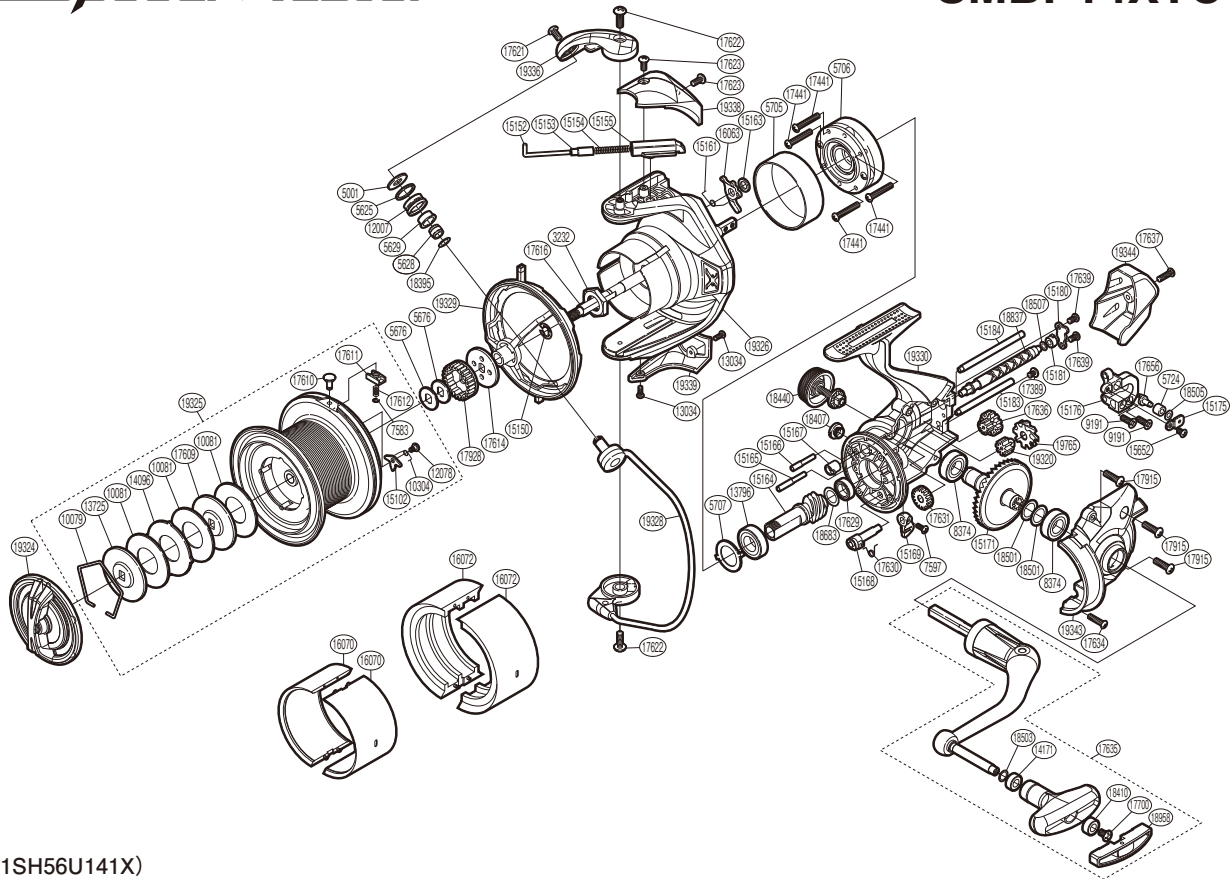


SHIMANO

SpeedMaster

SMBP14XTC



(51SH56U141X)

#	Part No.	Description	#	Part No.	Description	#	Part No.	Description
3232	107VW	Rotor Nut	15165	10CKK	Idle Gear B Shaft	17656	10DMP	Oscillating Pawl
5001	107WS	Line Roller Washer	15166	10H4E	Idle Gear C Shaft	17700	10LFA	Screw
5625	10KFF	Line Roller Spacer	15167	106M2	Worm Bushing (Front)	17915	10DN6	Screw
5628	10HAR	Line Roller Collar	15168	1053M	Anti-Reverse Cam	17928	101Y5	Spool Support A
5629	10PFK	Line Roller Bushing	15169	10G2T	Anti-Reverse Lever	18395	10KF7	Washer
5676	106VN	Spool Washer	15171	109FQ	Drive Gear	18407	10S0B	Oil Cap
5705	106HS	Roller Clutch Ring	15175	10HAD	Oscillating Pawl Cover	18410	10EU0	Handle Knob Bushing A
5706	10QL4	Roller Clutch Assembly	15176	10G62	Oscillating Slider	18440	10S2X	Handle Screw Cap Assembly
5707	106MU	Bearing Washer	15180	10AT4	Worm Shaft Retainer	18501	10DHR	Washer
5724	10JUY	Oscillating Slider Bushing	15181	106M3	Worm Bushing (Rear)	18503	101BD	Washer
7583	105NC	E Lock	15183	10357	Oscillating Guide A	18505	101BS	Washer
7597	10LCY	Screw	15184	104M7	Oscillating Guide B	18507	101BR	Washer
8374	107FL	Ball Bearing	15652	103LG	Screw	18683	10HHX	Washer
9191	10ML9	Screw	16063	1085E	Bail Trip Lever	18837	10STT	Worm Shaft
10079	10MZP	Drag Washer Retainer	17389	10LHN	Screw	18958	10TNL	Handle Knob Seal
10081	1031E	Drag Washer	17441	10LJ3	Screw	19320	10S81	Idle Gear B Small
10304	10JX8	Click Spring	17609	10BCF	Key Washer	19324	10RCH	Drag Knob Assembly
12007	10JLZ	Line Roller	17610	10ATX	Line Clip	19325	10RCF	Spool Assembly
12078	10PH4	Screw	17611	10JQU	Line Clip Holder	19326	1000F	Rotor Assembly
13034	103NJ	Screw	17612	10B03	Line Clip Spring	19328	1000E	Bail Assembly
13725	10PLN	Key Washer	17614	10GH5	Spool Support B	19329	10RJV	Line Safety Guard Assembly
13796	104PX	Ball Bearing	17616	103MD	Main Shaft	19330	1000D	Body Assembly
14096	10N2H	Eared Washer	17621	10K9Z	Screw	19336	10RCN	Bail Arm
14171	104UJ	Handle Knob Bushing	17622	10LLK	Screw	19338	10RCQ	Bail Spring Cover
15102	1038F	Drag Click	17623	10LFG	Screw	19339	10RCK	Bail Hold Support Guard
15150	105RZ	E Lock	17629	10EX6	Ball Bearing	19343	10RCR	Side Cover
15152	105YW	Bail Spring Guide A	17630	10DCS	Anti-Reverse Cam Spring	19344	10RCS	Rear Protector
15153	10HDL	Bail Spring Guide A Support	17631	10HBN	Idle Gear	19765	100EY	Idle Gear B
15154	105LK	Bail Spring	17634	10L6Q	Screw			
15155	107A8	Bail Spring Guide B	17635	10DFW	Handle Assembly	16070	10EWH	Spool Economizer A (10000) (accessory)
15161	106PM	Lever Spring	17636	10H4C	Idle Gear C	16072	10A9G	Spool Economizer C (3500) (accessory)
15163	10764	Washer	17637	103LU	Screw			
15164	10BV7	Pinion Gear	17639	10L22	Screw			

Please note that the number of adjusting washers may not be the same as shown in the exploded views.
(Adjustment will vary with each individual product.)

(240703)_004