

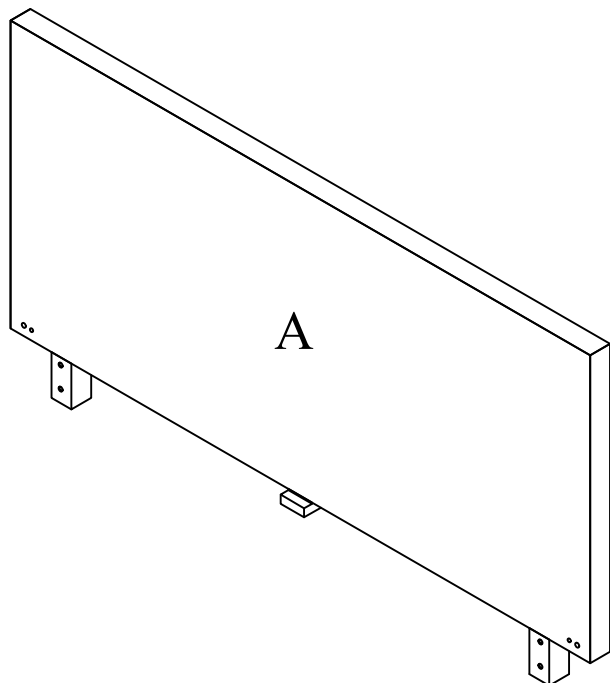
# MELBOURNE C. KING BED

## ASSEMBLY INSTRUCTIONS



### BOX #1

A. HEADBOARD 1PC

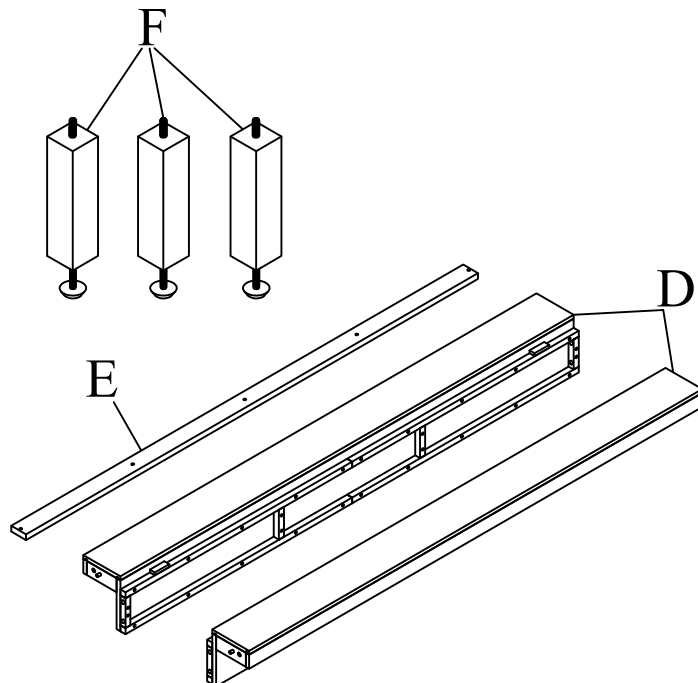


### BOX #3

D. SIDE RAIL 2 PCS

E. CENTER SLAT SUPPORT 1 PC

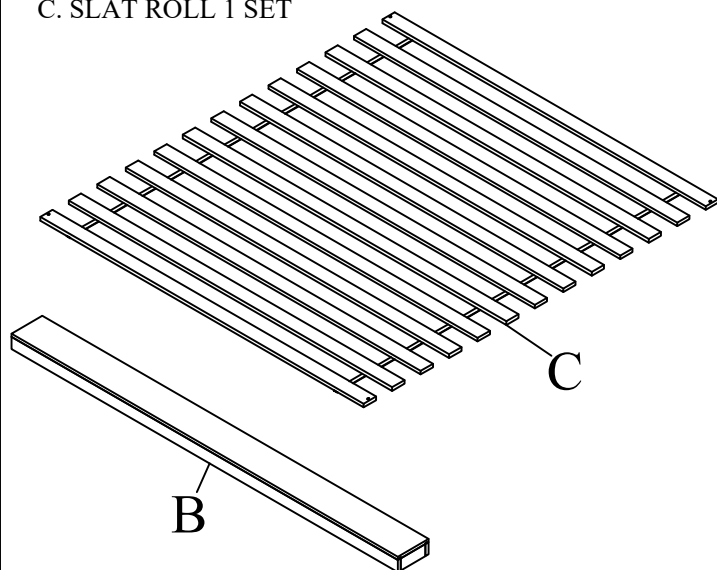
F. SUPPORT LEG 3 PCS



### BOX #2

B. FOOTBOARD 1PC

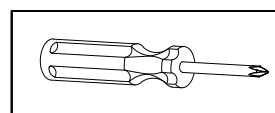
C. SLAT ROLL 1 SET



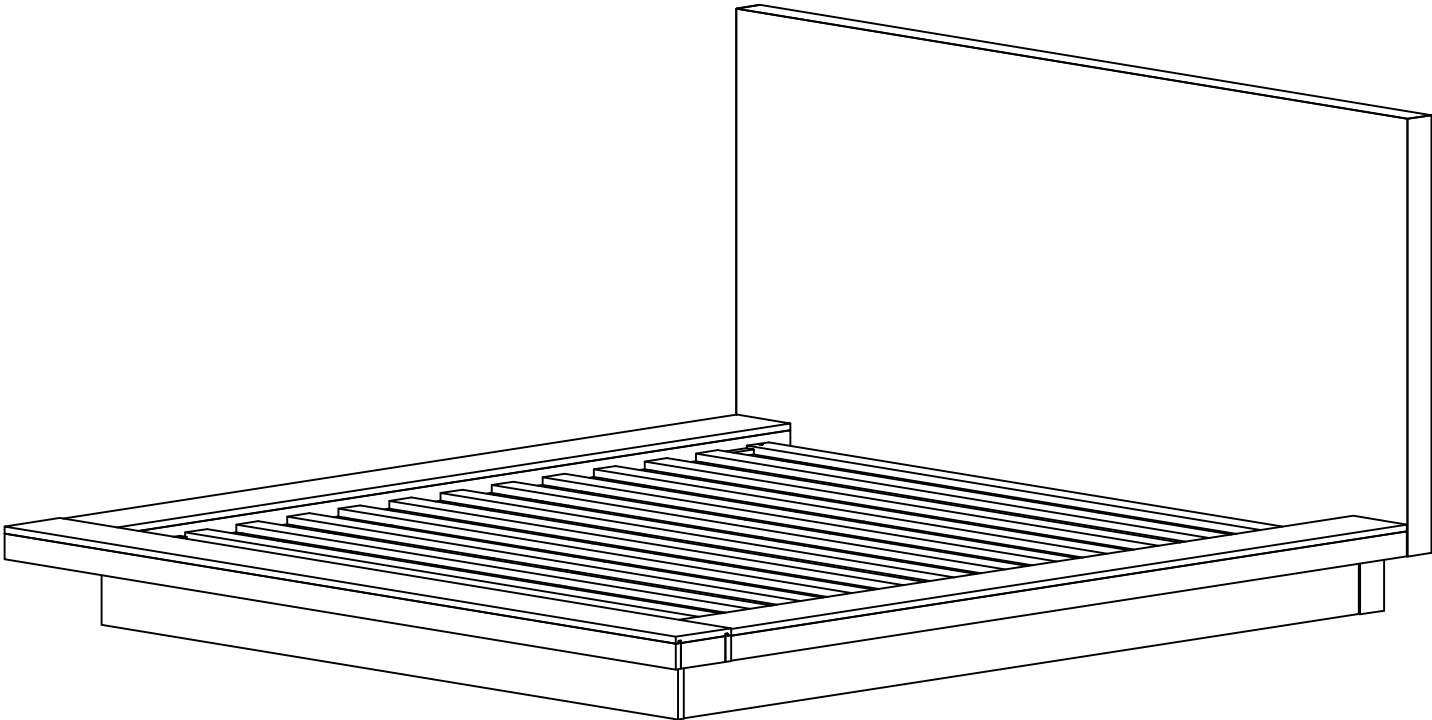
### HARDWARE PACKED IN BOX #2

1	ALLEN BOLT (M8X90)		2 PCS
2	ALLEN BOLT (M8X40)		10 PCS
3	SPRING WASHER (M8X13)		12 PCS
4	FLAT WASHER (M8X19)		12 PCS
5	WOOD SCREW (M4X30)		6 PCS
6	ALLEN KEY		1 PC

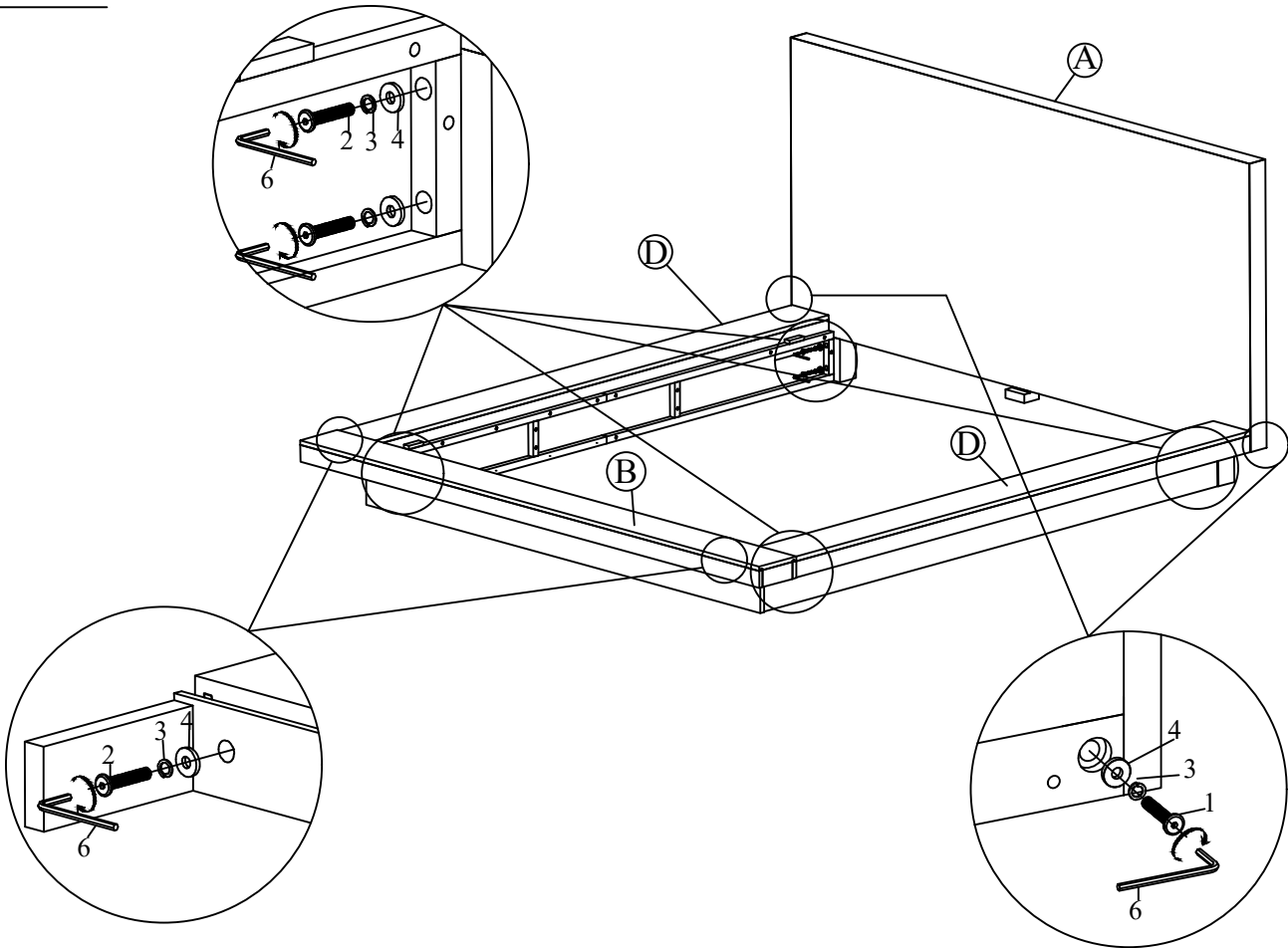
TOOL REQUIRED  
PHILLIPS HEAD SCREW DRIVER  
(NOT PROVIDED)



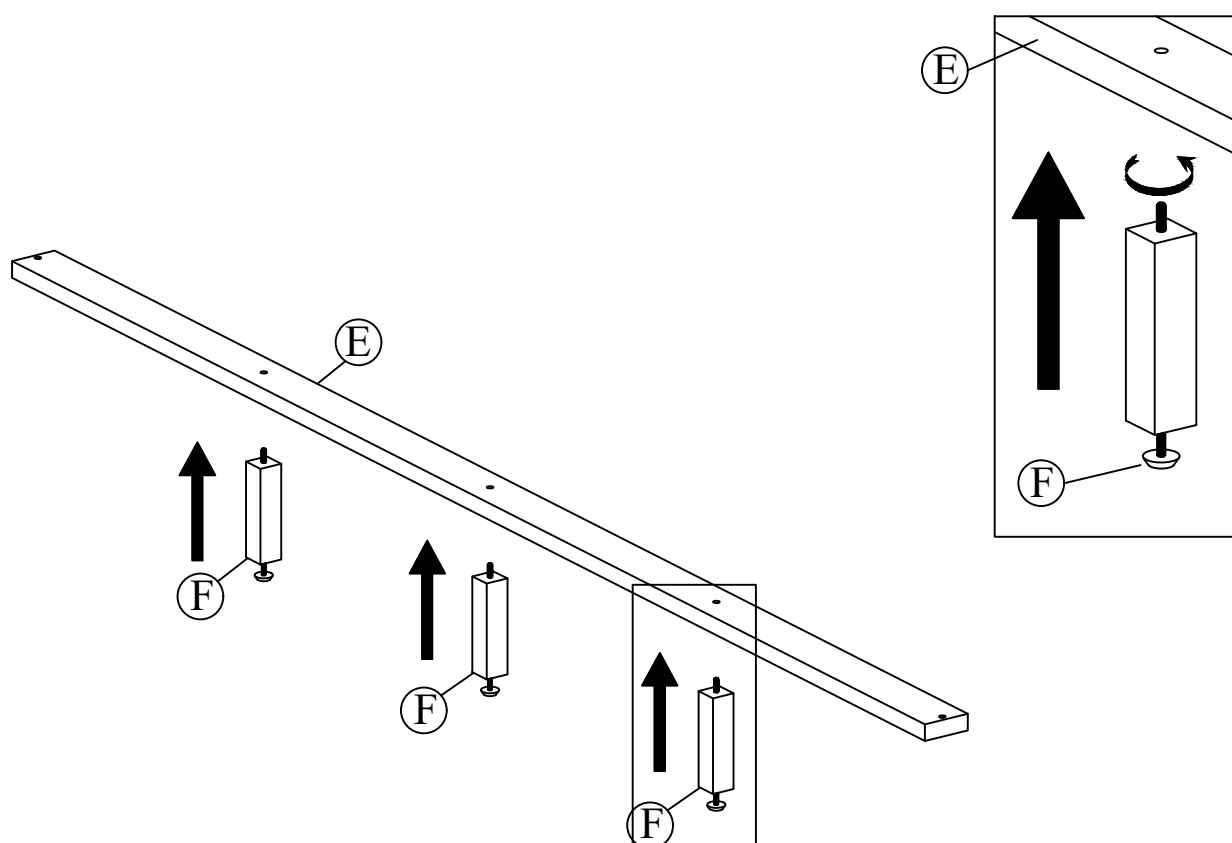
MELBOURNE BED FULLY ASSEMBLED



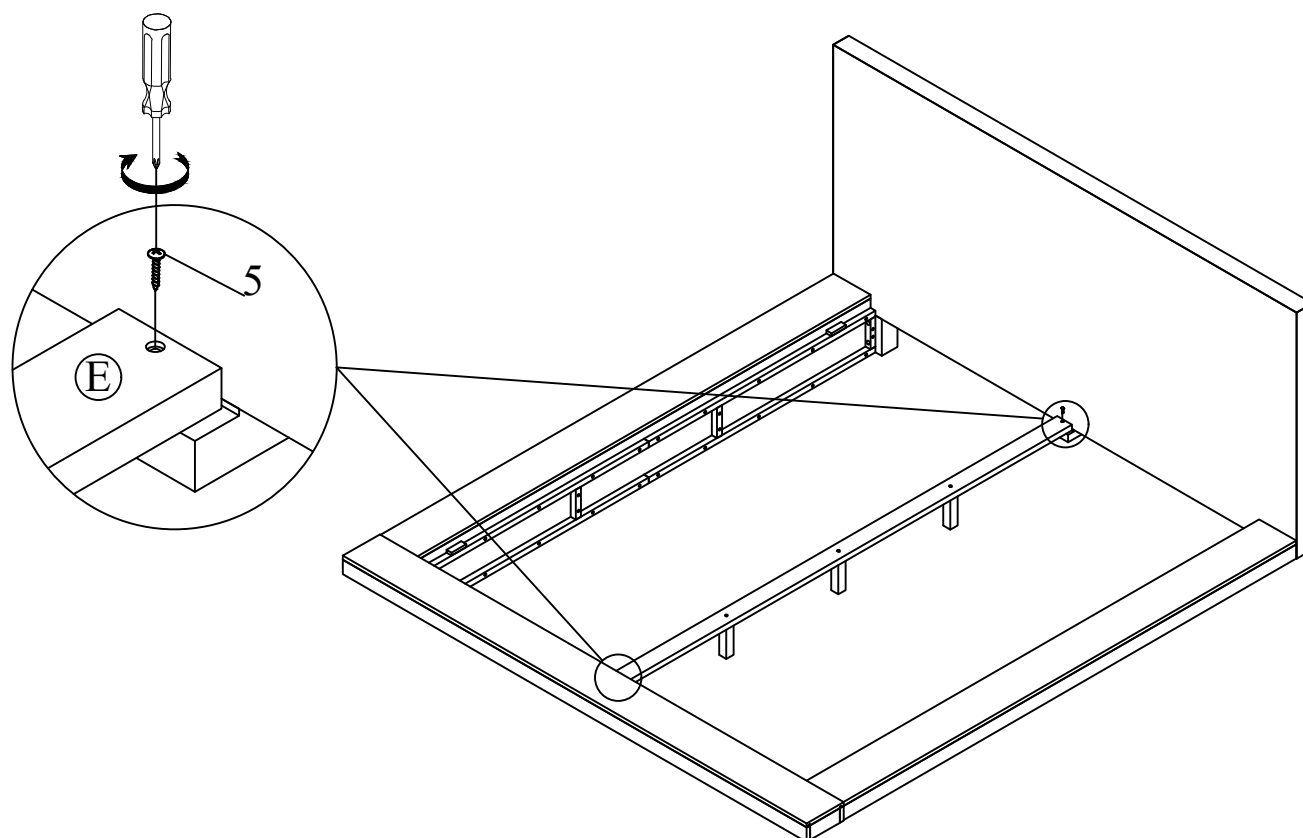
STEP 1:



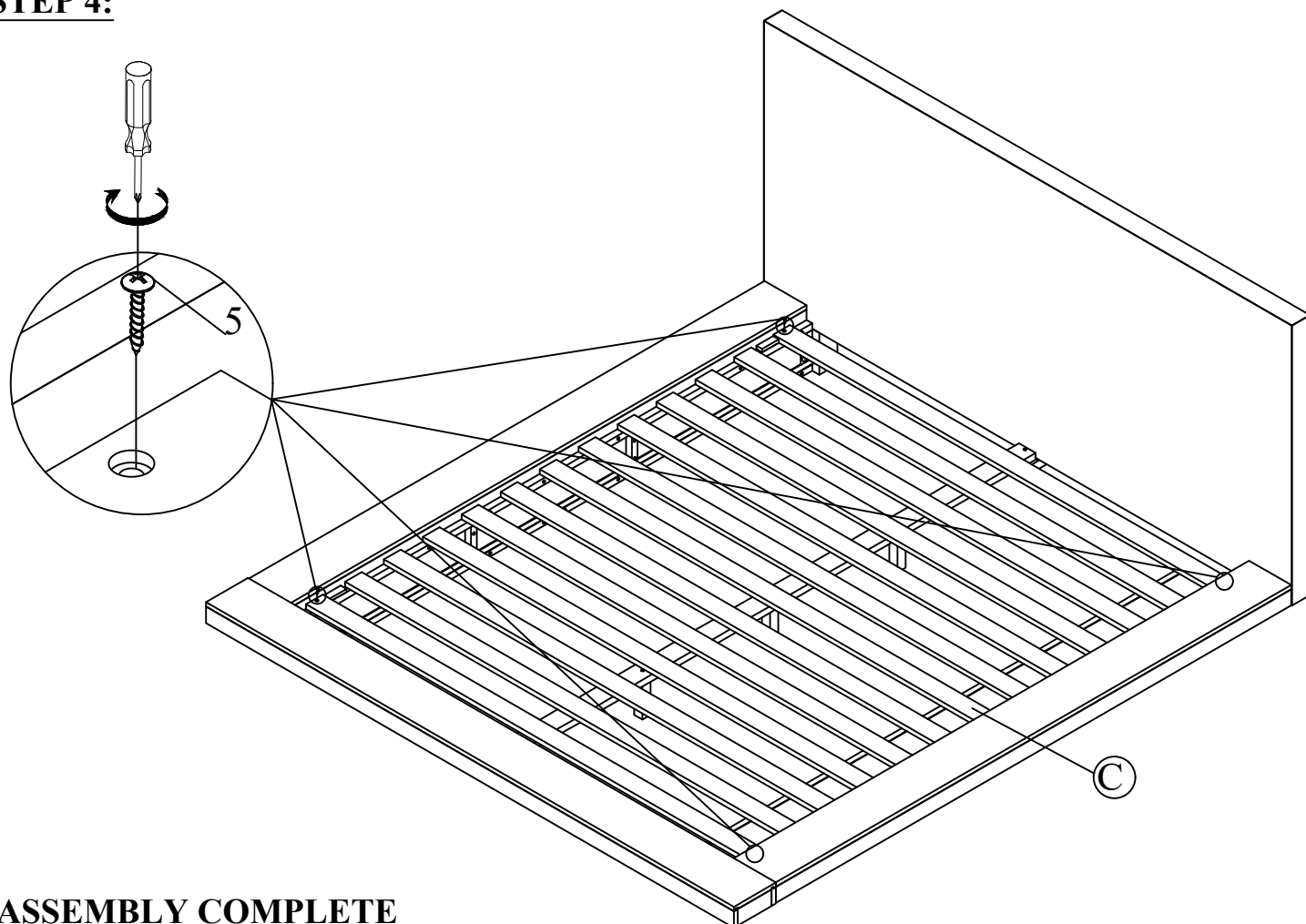
**STEP 2:**



**STEP 3:**



#### **STEP 4:**

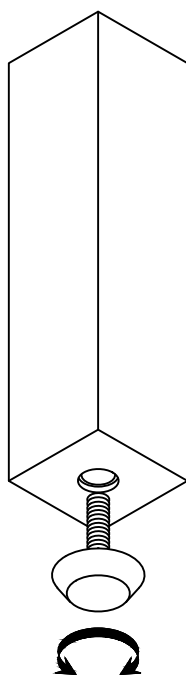


**ASSEMBLY COMPLETE**

#### **INSTRUCTIONS FOR ADJUSTING LEVELER:**

POSITION THE BED IN YOUR SPACE AND LOCATE THE LEVELER UNDER EACH SUPPORT LEG. TURN THE LEVELER COUNTER-CLOCKWISE TO EXTEND THE LEVELER AND CLOCKWISE TO RETRACT IT.

ADJUST EACH LEVELER UNTIL EACH SUPPORT LEG IS APPLYING EQUAL, UPWARD PRESSURE ON THE SUPPORT SLAT.



#### **MAINTENANCE INSTRUCTIONS:**

REMOVE YOUR MATTRESS, AND BOX SPRING IF APPLICABLE, BEFORE MOVING YOUR BED.

LIFT YOUR BED WHEN MOVING IT; DRAGGING CAN DAMAGE THE SUPPORTS.

RE-ADJUST THE LEVELERS AFTER MOVING YOUR BED.