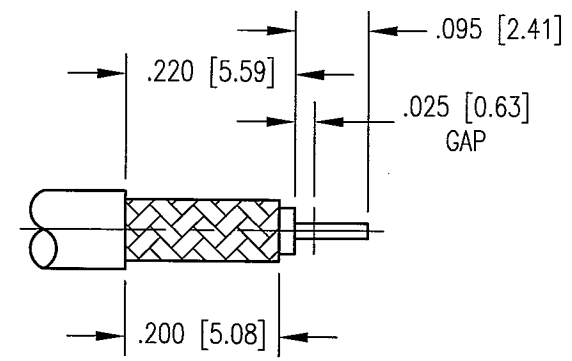
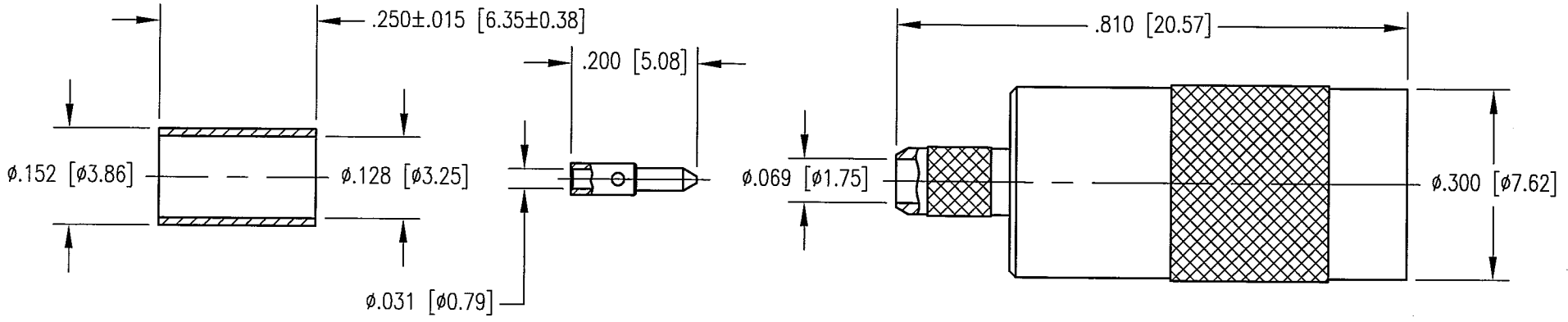


DWG. NO.		361-900-0630H	
REV	DESCRIPTION	BY DATE	APPD
A	RELEASED PER ECR 7401	7/12/02	<i>[Signature]</i>



- NOTES:
- MATERIALS:  
 BODY, REAR CONTACT AND CONTACT SHROUD: BRASS PER ASTM B16  
 ALL OTHER METAL PARTS: COPPER ALLOY  
 INSULATOR: TEFLON PER ASTM D1710
  - FINISH:  
 BODY: .000015 MIN. GOLD PER MIL-G-45204 OVER  
 .000050 MIN. NICKEL PER QQ-N-290  
 FERRULE: .000005 MIN. GOLD PER MIL-G-45204 OVER  
 .000050 MIN. NICKEL PER QQ-N-290  
 ALL OTHER METAL PARTS: .000030 MIN. GOLD PER MIL-G-45204 OVER  
 .000050 MIN. NICKEL PER QQ-N-290
  - FOR USE WITH RG-316 CABLE OR EQUIVALENT.
  - FOR CABLING PROCEDURES USE CAP 9-11 WITH TRIMMING DIMENSIONS SHOWN.
  - CRIMP FERRULE USING .128 HEX DIE.

PER ASME Y14.5M-1994 UNLESS OTHERWISE SPECIFIED: DIMENSIONS ARE IN INCHES [MM]		<b>NORTHROP GRUMMAN</b>	
TOLERANCES: DECIMALS .XX ± .01 [0.254] .XXX ± .005 [0.127] ANGLES ± 2°		Winchester Electronics 400 Park Road Watertown, CT 06795	
SCALE: 4:1		TITLE	
CUSTOMER DRAWING		BMA STRAIGHT RECEPTACLE	
DRAWN JED	DATE 7/12/02	CHECKED <i>[Signature]</i>	DATE 7/18/02
APPROVED <i>[Signature]</i>	DATE 7/18/02	APPROVED <i>[Signature]</i>	DATE 7/18/02
A		361-900-0630H	SHT. 1 OF 1 REV. A