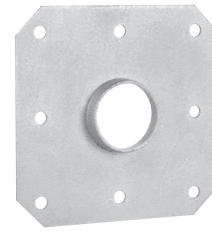


Solder Straps

Copper-eared Tube Hanger

- 1/8" mounting holes align with most conventional brackets
- 17-gauge copper-plated steel
- Spot solder to copper tube (heat the tube, not the strap)



505-24



505-29



505-5

SUPPLY

DRAINAGE

SUPPORT

APPENDIX

Item No.	Description	Pkg	Min Qty	Case Qty
SQUARE O STRAP™				
505-24	1/2" CTS	B	100	100
505-34	3/4" CTS	B	100	100
505-44	1" CTS	B	50	50
SOLDER O STRAP™				
505-29	1/2" CTS	B	100	500
505-39	3/4" CTS	B	100	500
505-49	1" CTS	B	50	50
SOLDER C STRAP™				
505-5	1 1/4" CTS	B	25	100

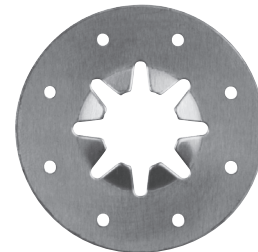


NEW

Copper Star™

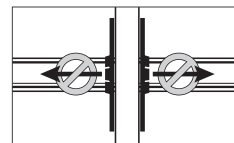
Tube Locking One-Way Push Nut

- 20-gauge pure copper, 2" O.D.
- Slides over and locks copper tube into place
- Secures copper tube when penetrating walls and floors



612-2

Item No.	Description	Pkg	Min Qty	Case Qty
612-2	1/2" CTS	B	50	500
612-2PK2	1/2" CTS, 5/bag	C*	10	10
612-3	3/4" CTS	B	25	250
612-3PK2	3/4" CTS, 5/bag	C*	10	10
612-4	1" CTS	B	25	250



Two Copper Stars™ prevent movement in either direction