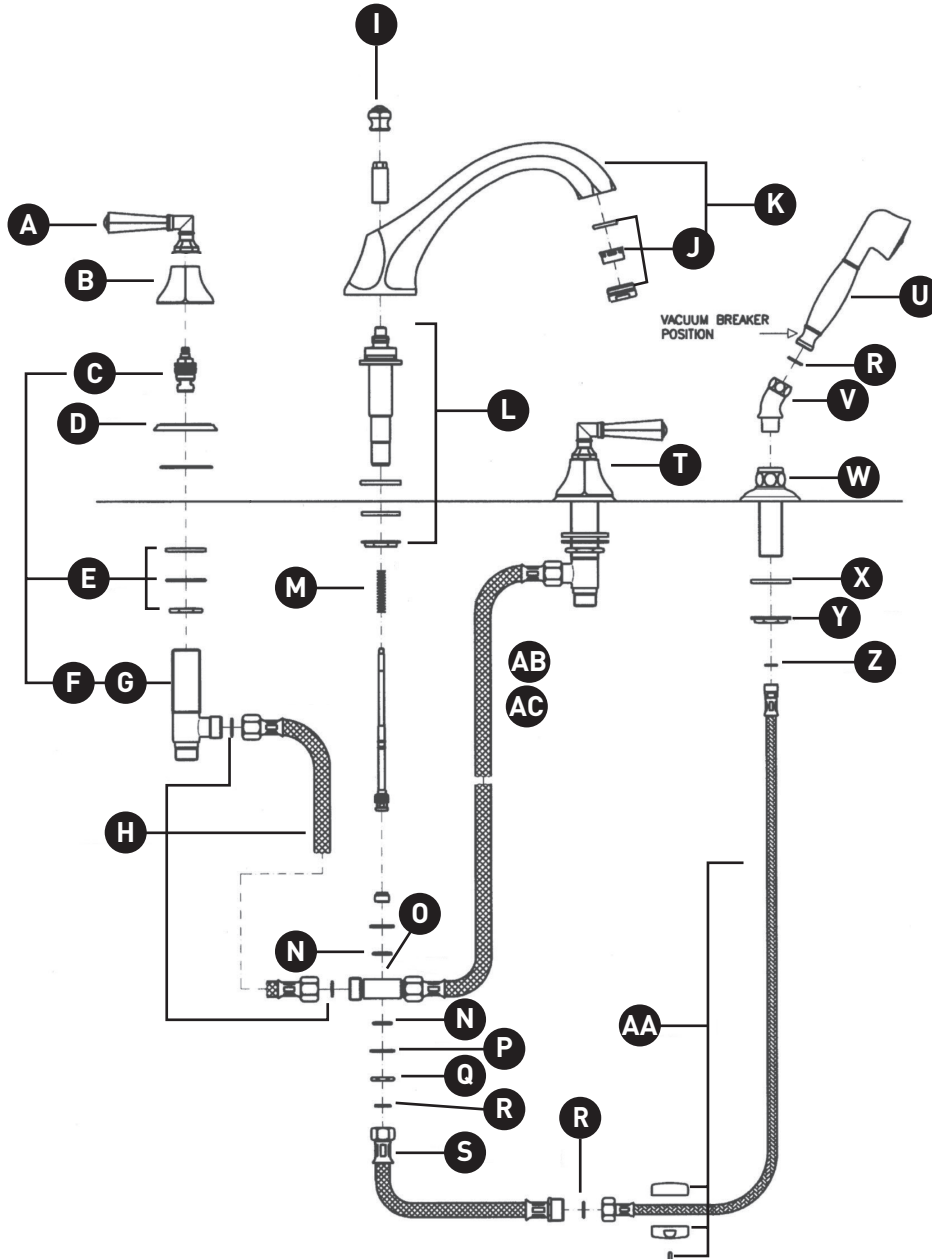


ORDER BY PART NUMBER

ILLUSTRATED PARTS

A1904

Palladian® 4-Hole Deck Mount Tub Filler



ID	Kit Number	Finish
A	C7605*	See below
B	C7243/2*	See below
C	C7075A/L	N/A
D	C7244	N/A
E	C422/2	N/A
F	C7422L	N/A
G	C7422R	N/A
H	C7089.6034NSF	N/A
I	C7290*	See below
J	C7081*	See below
K	C1904*	See below
L	C1204/04	N/A
M	C1804/11CR	N/A
N	C7586.70	N/A
O	C7434	N/A
P	C1204/9	N/A
Q	C7260.12	N/A
R	C7573	N/A
S	C7089.100	N/A
T	C7075ASX/R*	See below
U	1105/8*	See below
V	C7119*	See below
W	C7133*	See below
X	C7582	N/A
Y	C7260.26	N/A
Z	C7583.15	N/A
AA	C7095	N/A
AB	C7586.03	N/A
AC	C7586.39	N/A

***Finish Determined by Suffix**

Finish	Description
APC	Polished Chrome
IB	Italian Brass
MB	Matte Black
PN	Polished Nickel
STN	Satin Nickel
SUB	Satin Unlacquered Brass
TCB	Tuscan Brass

For warranty or additional information, contact:

U.S.A.
houseofrohl.com/support
1-800-777-9762

QUEBEC / MARITIMES / WESTERN CANADA
QUÉBEC / MARITIMES / OUEST CANADIEN
QUEBEC / MARITIMOS / CANADA OCCIDENTAL
houseofrohl.ca/support
1-866-473-8442

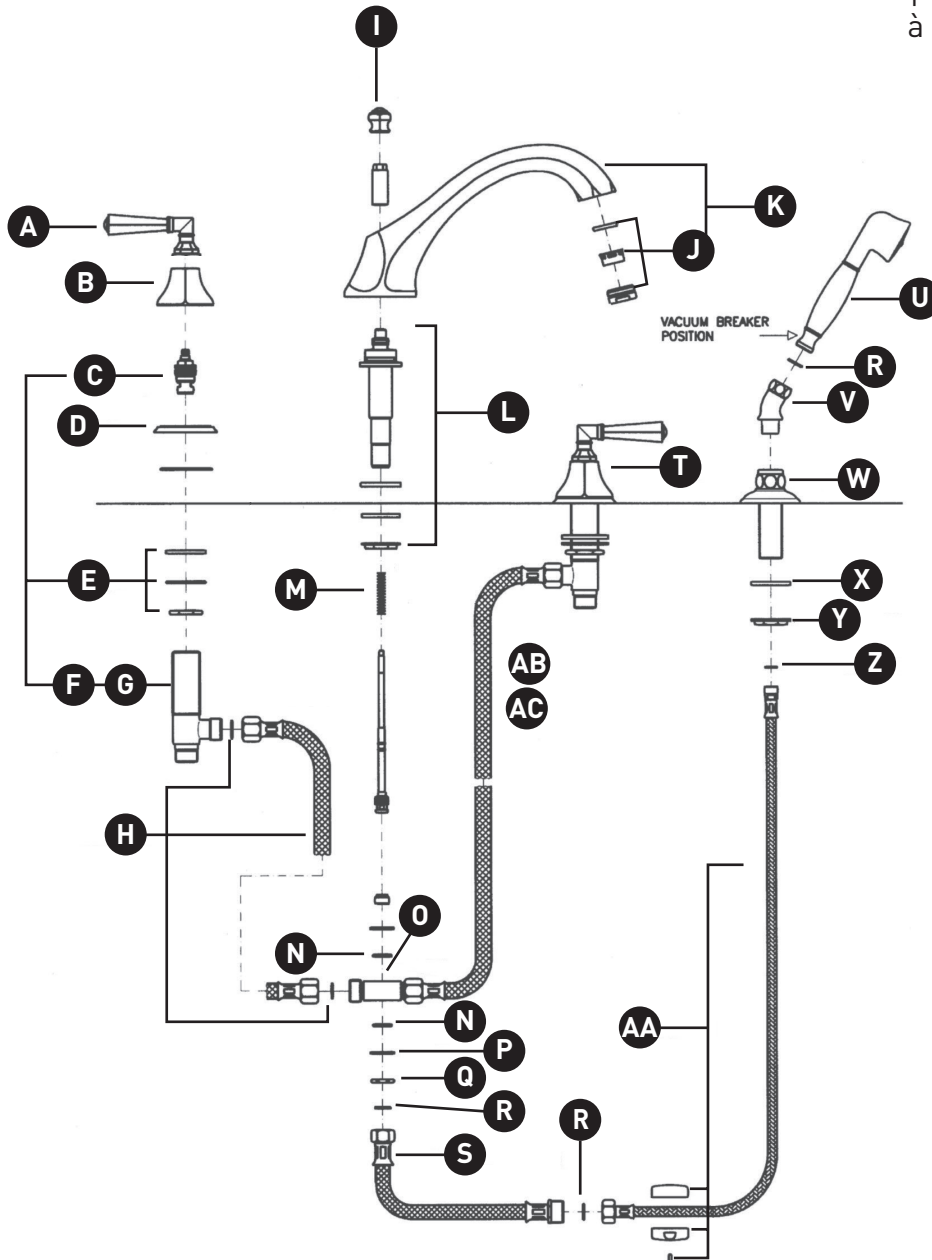
ONTARIO
houseofrohl.ca/support
1-800-287-5354

VEUILLEZ EFFECTUER VOTRE COMMANDE
PAR NO DE RÉFÉRENCE

ILLUSTRATIONS DES PIÈCES

A1904

Remplisseur de baignoire Palladian®
à montage sur pont à 4 trous



ID	Référence du kit	Finition
A	C7605*	Voir ci-dessous
B	C7243/2*	Voir ci-dessous
C	C7075A/L	N/A
D	C7244	N/A
E	C422/2	N/A
F	C7422L	N/A
G	C7422R	N/A
H	C7089.6034NSF	N/A
I	C7290*	Voir ci-dessous
J	C7081*	Voir ci-dessous
K	C1904*	Voir ci-dessous
L	C1204/04	N/A
M	C1804/11CR	N/A
N	C7586.70	N/A
O	C7434	N/A
P	C1204/9	N/A
Q	C7260.12	N/A
R	C7573	N/A
S	C7089.100	N/A
T	C7075ASX/R*	Voir ci-dessous
U	1105/8*	Voir ci-dessous
V	C7119*	Voir ci-dessous
W	C7133*	Voir ci-dessous
X	C7582	N/A
Y	C7260.26	N/A
Z	C7583.15	N/A
AA	C7095	N/A
AB	C7586.03	N/A
AC	C7586.39	N/A

*Finition déterminée par le Suffixe

Finition	Description
APC	Chrome poli
IB	Cuivre italien
MB	Noir mat
PN	Nickel poli
STN	Nickel satiné
SUB	Laiton non laqué satiné
TCB	Laiton toscan

For warranty or additional information, contact:

U.S.A.
houseofrohl.com/support
1-800-777-9762

QUEBEC / MARITIMES / WESTERN CANADA
QUÉBEC / MARITIMES / OUEST CANADIEN
QUEBEC / MARITIMOS / CANADA OCCIDENTAL
houseofrohl.ca/support
1-866-473-8442

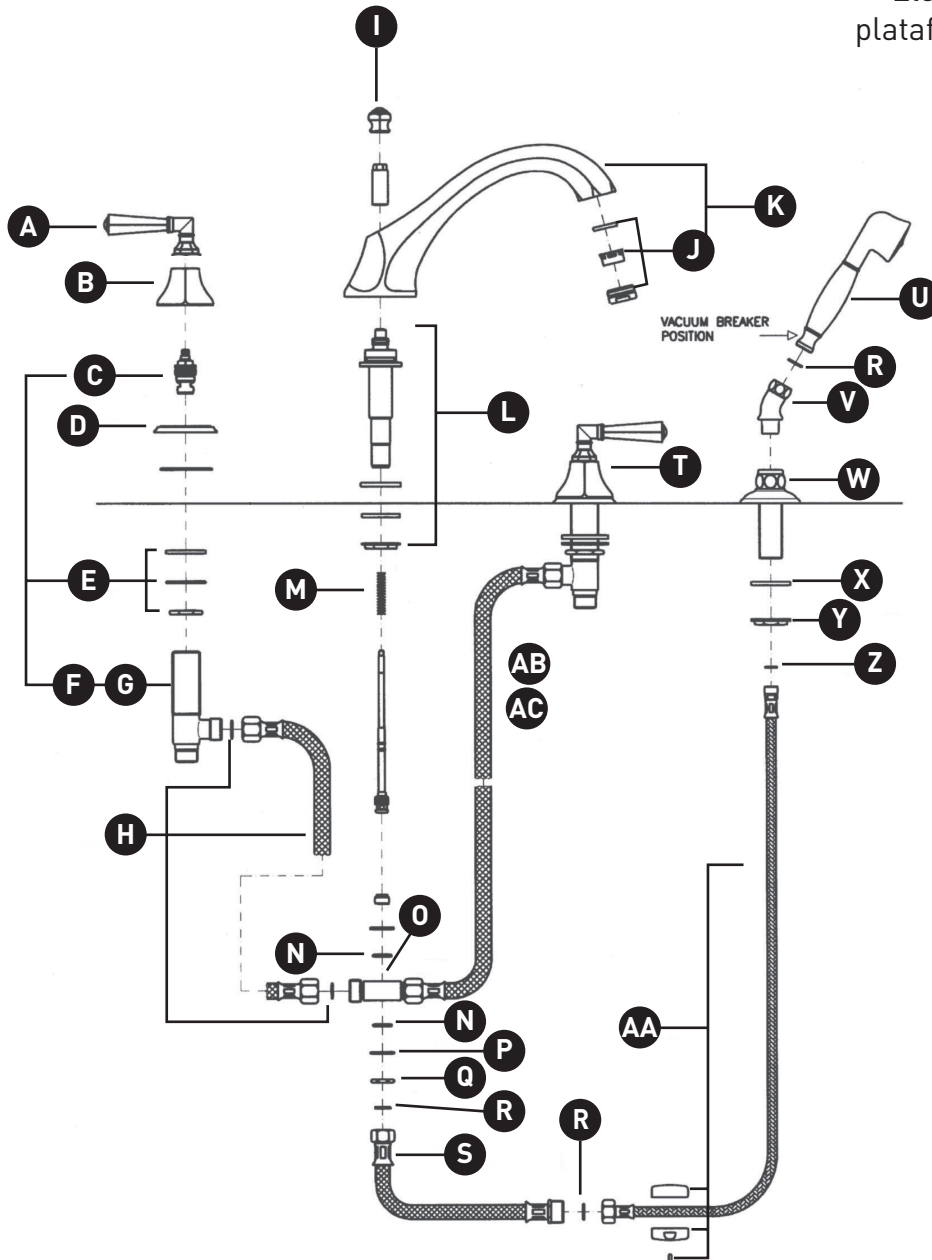
ONTARIO
houseofrohl.ca/support
1-800-287-5354

PEDIR POR NÚMERO DE REFERENCIA

PIEZAS ILUSTRADAS

A1904

Llenador de tina de montaje en plataforma de 4 orificios Palladian®



ID	Referencia del kit	Acabado
A	C7605*	Ver más abajo
B	C7243/2*	Ver más abajo
C	C7075A/L	N/A
D	C7244	N/A
E	C422/2	N/A
F	C7422L	N/A
G	C7422R	N/A
H	C7089.6034NSF	N/A
I	C7290*	Ver más abajo
J	C7081*	Ver más abajo
K	C1904*	Ver más abajo
L	C1204/04	N/A
M	C1804/11CR	N/A
N	C7586.70	N/A
O	C7434	N/A
P	C1204/9	N/A
Q	C7260.12	N/A
R	C7573	N/A
S	C7089.100	N/A
T	C7075ASX/R*	Ver más abajo
U	1105/8*	Ver más abajo
V	C7119*	Ver más abajo
W	C7133*	Ver más abajo
X	C7582	N/A
Y	C7260.26	N/A
Z	C7583.15	N/A
AA	C7095	N/A
AB	C7586.03	N/A
AC	C7586.39	N/A

*Acabado determinado por el sufijo

Acabado	Descripción
APC	Cromo pulido
IB	Latón italiana
MB	Negro mate
PN	Níquel pulido
STN	Níquel satinado
SUB	Latón satinado sin lacar
TCB	Latón toscano

For warranty or additional information, contact:

U.S.A.
houseofrohl.com/support
1-800-777-9762

QUEBEC / MARITIMES / WESTERN CANADA
QUÉBEC / MARITIMES / OUEST CANADIEN
QUEBEC / MARITIMOS / CANADA OCCIDENTAL
houseofrohl.ca/support
1-866-473-8442

ONTARIO
houseofrohl.ca/support
1-800-287-5354