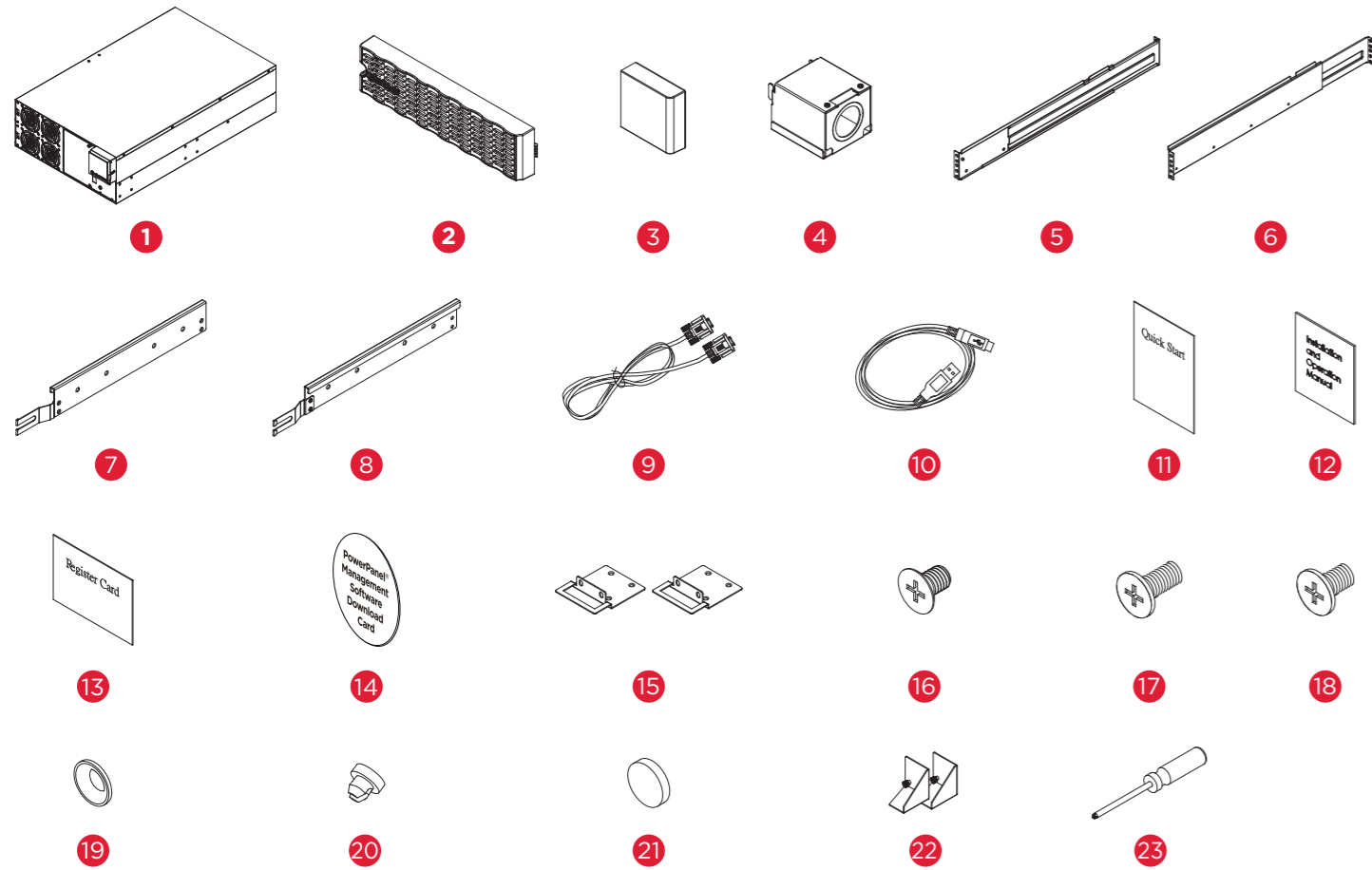


OL8KRTHD/OL10KRTHD QUICK START GUIDE

UNPACKING



ITEM	CONTENT	QTY	ITEM	CONTENT	QTY
1	UPS	1	13	Registration warranty card	1
2	Left front panel	2	14	PowerPanel Management Software Download Card	1
3	Right front panel	1	15	Rackmount ears	2
4	Input/Output Terminal block cover	2	16	Flat head screws M5X7L	8
5	Rackmount left rail	1	17	Pan head screws M5X8L	12
6	Rackmount right rail	1	18	Pan head screws M5X6L	6
7	Left hanging bracket	1	19	Plastic washers	8
8	Right hanging bracket	1	20	Screw hole dust covers	18
9	Serial Interface Cable (RS-232)	1	21	Rubber pads	12
10	USB communication cable	1	22	Stand	2
11	Quick Start Guide	1	23	Screwdriver	1
12	Installation and Operation Manual	1			

Need Additional Help? See Operation and Installation Manual provided and also available to download at www.cyberpowersystems.com.
Still Need Help? Please contact our Tech Support department with installation, troubleshooting, or general product questions.

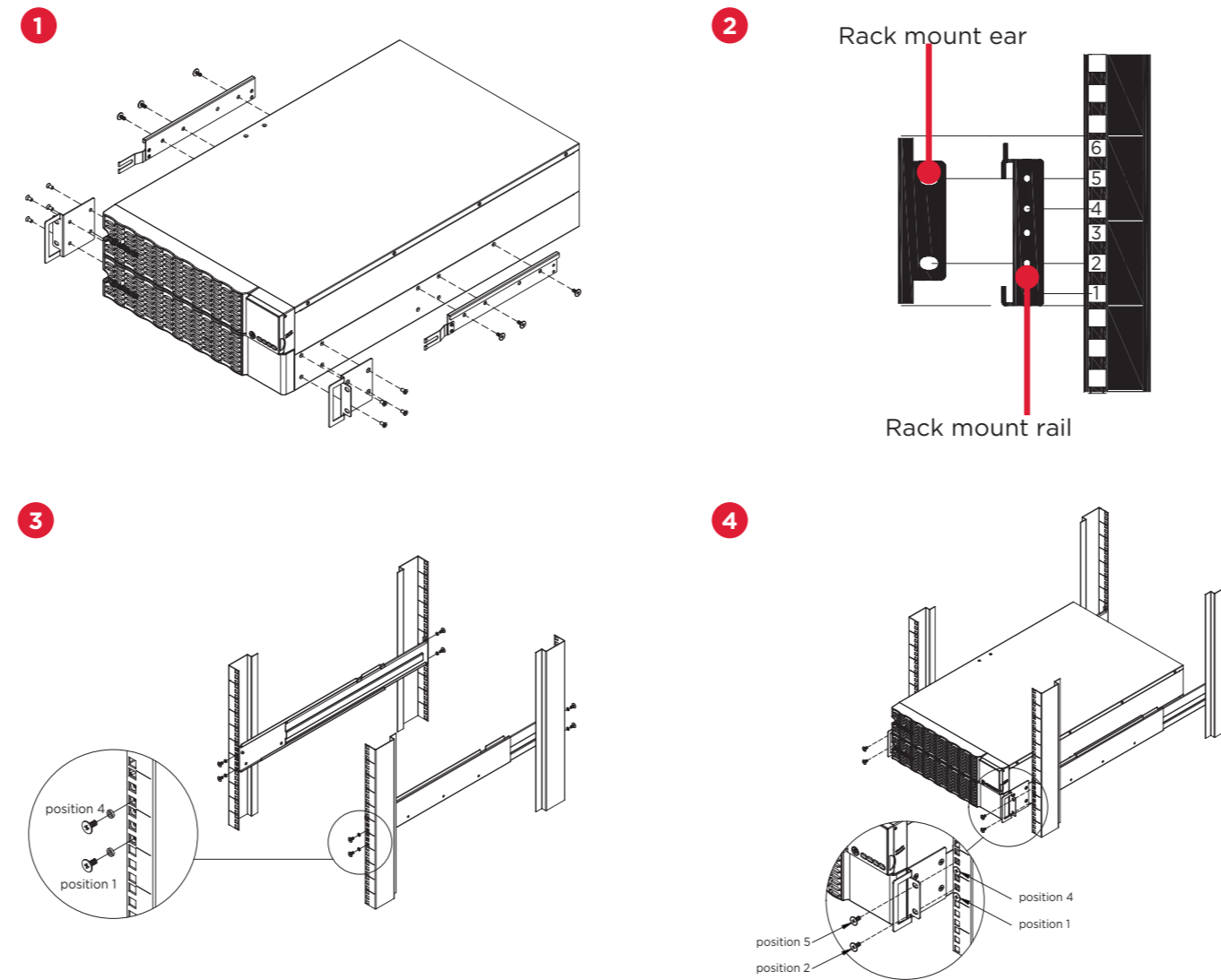
CyberPower Technical Support | 1-877-297-6937 | tech@cpsww.com | cyberpowersystems.com
4241 12th Avenue E, Suite 400, Shakopee, MN 55379, USA
Hours of Operation: Monday - Friday, 7:00am - 6:00pm (CST)

This document is believed to be accurate, but CyberPower reserves the right to change or correct the contents and does not assume any responsibility for omissions or errors. Entire contents copyright © 2019 Cyber Power Systems, Inc. All rights reserved. Reproduction in whole or in part without permission is prohibited.

K01-0001004-00

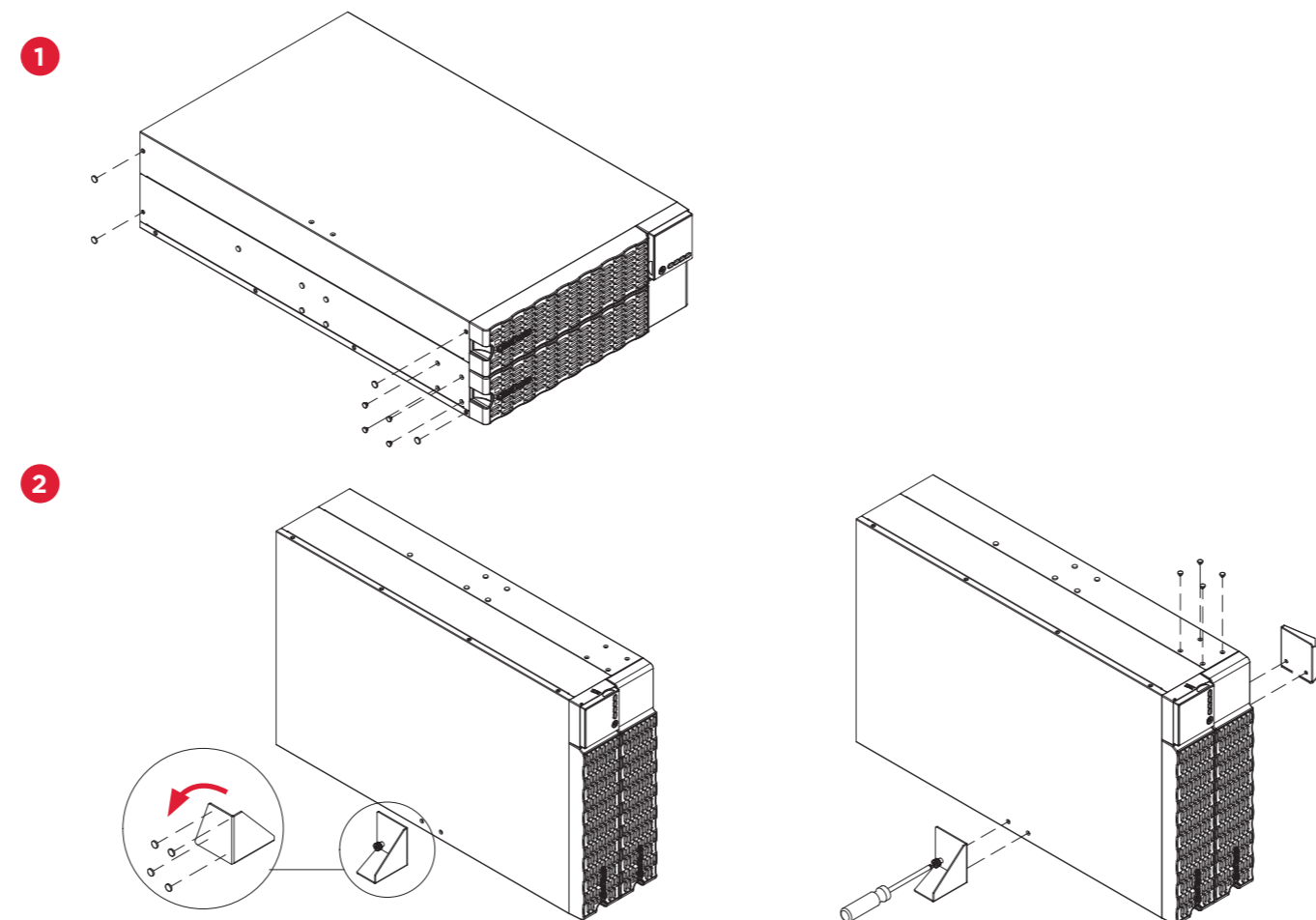
RACKMOUNT INSTALLATION

1. Install rack mount ears using eight M5X7L flat head screws and hanging brackets using six M5X6L pan head screws.
2. Locate space where the UPS will be installed in the rack.
3. Install rack mount rails using eight M5X8L pan head screws with plastic washers and adjust rails to necessary rack depth.
4. Place and secure the UPS on to the rack mount rails using four M5X8L pan head screws.



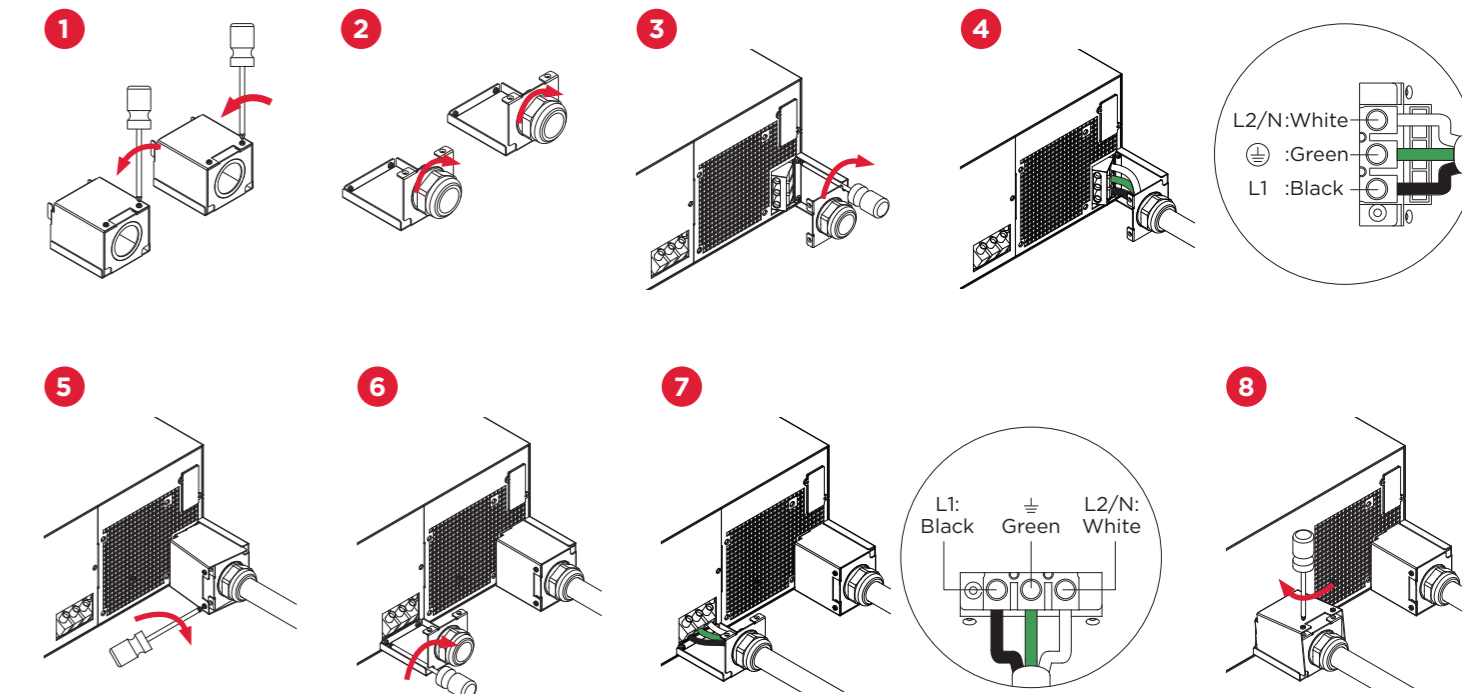
TOWER INSTALLATION

1. Adhere twelve circular rubber pads to the stands and to the left hand side of the UPS as shown below. This will become the bottom of the UPS.
2. Stand the UPS system on its side and tighten the screws on the tower stands onto the bottom of the UPS as shown below. Insert the dust covers into the open screw holes on top.



UPS INPUT/OUTPUT ELECTRICAL CONNECTION

1. **Separate the INPUT/ OUTPUT top and bottom covers**
Loosen the two screws to separate the INPUT/ OUTPUT top and bottom covers.
2. **Fix the appropriate cable gland (not included) on the bottom cover**
Tighten the appropriate cable gland (not included) on the bottom cover by rotating it. Make sure the cable gland is fixed well on the bottom cover.
3. **Fix the INPUT bottom cover on the INPUT terminal block**
Tighten the two screws to fix the INPUT bottom cover on the INPUT terminal block.
4. **Input configuration**
Insert the input cable through the appropriate cable gland (not included). Connect the three wires to the input terminal block.
5. **Fix the Input top cover on the Input bottom cover**
Tighten the two screws to fix the INPUT top cover on the bottom cover.
6. **Fix the OUTPUT bottom cover on the OUTPUT terminal block**
Tighten the two screws to fix the OUTPUT bottom cover on the OUTPUT terminal block.
7. **OUTPUT configuration**
Insert the output cable through the appropriate cable gland (not included). Connect the three wires to the output terminal block.
8. **Fix the OUTPUT top cover on the OUTPUT bottom cover**
Tighten the two screws to fix the OUTPUT top cover on the bottom cover.



IMPORTANT! Make sure the utility circuit breaker feeding the UPS input is in the OFF position.
IMPORTANT! Verify the input branch circuit breaker and wiring meet the recommended sizing.

UPS CAPACITY	BRANCH CIRCUIT BREAKER	WIRING AWG	WIRING mm ²	SCREW TORQUE lbf-in
8KVA	60A	6AWG	14.0 mm ²	18 lbf-in
10KVA	70A			

If the OL10KRTHD UPS is being used in a region with a standard input voltage of 200V, you will need to use 4AWG wiring.

POWER ON THE UPS SYSTEM

1. Switch the utility circuit breaker feeding the UPS to the ON position.
2. Turn the UPS ON - push and hold the ON/OFF power button for 3 seconds; you will hear continuous beeps.
3. UPS will perform a brief self-test lasting about 15 seconds then the UPS is operating in Battery Mode first then transfer to Line Mode if Input power is qualification and powering the output.
4. Customize UPS system configuration settings as needed. See User's Manual for complete details. User Manual is available to download on www.cyberpowersystems.com.
5. Connect equipment load to the UPS system.

