

IP Outdoor AutoFocus Turret Camera with Advanced Analytics



EL-IP-OTA4-WH

EL-IP-OTA4-BK



Auto-Focus and Advanced Analytics

The ELAN EL-IP-OTA4, available in White and Black, is a versatile 4MP turret camera with autofocus and advanced object analytics to elevate the intelligent home and business. It's the ideal choice for installations requiring enhanced information reporting, crystal clear images, IP66 weather resistance, and superior IR captures.

The EL-IP-OTA4 turret camera is quick and easy to install, and its auto-focus feature enables final focusing from within the ELAN App, rather than up on the ladder. The turret camera can be either ceiling-mounted or wall-mounted, expanding placement opportunities. The EL-IP-OTA4 camera has a flat lens, independent IR sensor for distortion-free images, plus superior IR capture with no IR bounce – all in an attractive housing.

Video Analytics

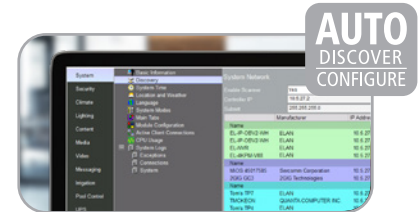
Advanced Object Detection, Person and Vehicle Classification greatly reduces false positive alerts. And Push Messages can be easily set up to alert a user's mobile device of events around the home.

Auto-Discover/Auto-Configure

Like all other ELAN Surveillance products, the EL-IP-OTA4 is embedded with the ELAN beacon, making it effortless to install in any ELAN system. The ELAN Management Cloud or Configurator scans the network – both wired and wireless – and automatically discovers the SSIDs of available devices. With a click, the camera is configured and installed in the ELAN system. We've eliminated the need to use a secondary application to setup the camera outside of ELAN, saving substantial time on every surveillance installation.

Comprehensive Surveillance

ELAN Surveillance cameras work seamlessly with the ELAN Network Video Recorder (EL-NVR Series) to create a surveillance ecosystem that excels in every application. Cameras and NVR can be fully managed from within the ELAN App, simplifying the user experience.



One-click set-up with ELAN Auto-Discover/Auto-Configure



Illumination from Infrared (IR) LEDs enables night vision up to 30 meters



Advanced Object Detection, Person and Vehicle Classification



Fine-tune the focus from within the ELAN app, rather than up on the ladder



Wide Dynamic Range improves image quality by balancing dark and light areas in an image

EL-IP-OTA4-WH | EL-IP-OTA4-BK IP Outdoor AutoFocus Turret Camera with Advanced Analytics

ORDER #: EL-IP-OTA4-WH | EL-IP-OTA4-BK



FEATURES

- AutoFocus
- IntelliVision® Advanced Analytics
- Auto-Discover/Auto-Configure
- 4 Megapixel
- 30m IR Distance
- 2.8-8mm AutoFocus Lens
- Advanced Built-in Motion Analytics
- IP66 Weather Resistant
- Alarm In/Out
- 2-Way Audio Support
- Automatic Gain Control (AGC)
- Operating Temperature: -40°F – 122°F
- Max Frame Rate: 20FPS @ 2688x1520
- 3D Digital Noise Reduction
- 2D Wide Dynamic Range
- Power Over Ethernet (PoE)

INCLUDED IN THE BOX:

- (1) Camera
- (1) Quick Installation Guide
- (1) Mounting Template
- (3) Mounting Hardware
- (1) Allen Wrench

| SPECIFICATIONS | |
|-----------------------|--|
| Power Consumption | DC12V, 7.2W / PoE, 8.3W |
| Dimensions | 4.5" x 3.58" |
| Weight | 15.3oz |
| Operating Temperature | -40°F – 122°F |
| Focal Length | 2.8 – 8 mm (zoom / focus motorized) |
| IR Range | 30m |
| Alarm Event Triggers | Motion/Tamper/Network lost detection |
| Alarm Event Actions | FTP, SMTP, SAMBA |
| SD Card Recording | N/A |
| Video Analytics | Survey Area, Object Detection, Person Classification, Vehicle Classification |
| Certifications | CE: Class B, FCC: Class B, IP66 Weather Resistant |

| VIDEO | |
|----------------------------------|---|
| Video compression | Smart H.264/ H.264 High/Main Profile, Motion JPEG |
| Maximum Frame Rate | H.264 and MJPEG: : up to 30 FPS @ 1920 x 1080 |
| Day/Night (IR-cut filter) | Color (Day), Monochrome (Night), Auto, Schedule |
| Scanning system | Progressive scan |
| Back Light Compensation | On / Off |
| High Dynamic Range (HDR) | Up to 100db |
| 2D WDR | Off / Auto / x2 / x3 / x4 |
| 3D Noise Reduction | Off / 1 to 32 selectable |
| Privacy Masking | Off / On (4 independent areas) |
| Sense Up | Off / 1 frame / 2 frames |
| Sense Up+ | Yes |
| Auto Gain Control | 36 dB variable gain |
| Other Functions | Sharpness, Hue, Image flip, Image mirror |
| Lens Distortion Correction (LDC) | Yes |

| NETWORK | |
|-------------------------|---|
| Ethernet | 10Base-T / 100Base-TX, RJ-45 |
| On-Screen Display (OSD) | Text over date, time, and camera name |
| Protocols | IPv4, IPv6, TCP, UDP, HTTP, HTTPS, SMTP, MQTT, QoS, SNMP, SNMP Trap, NTP, DDNS, UPnP, FTP, ARP, DHCP, PPPoE, DNS, RTSP, RTCP, Telnet, ICMP, IGMP, SDDP, Bonjour |
| Multi IP Addresses | Yes |

