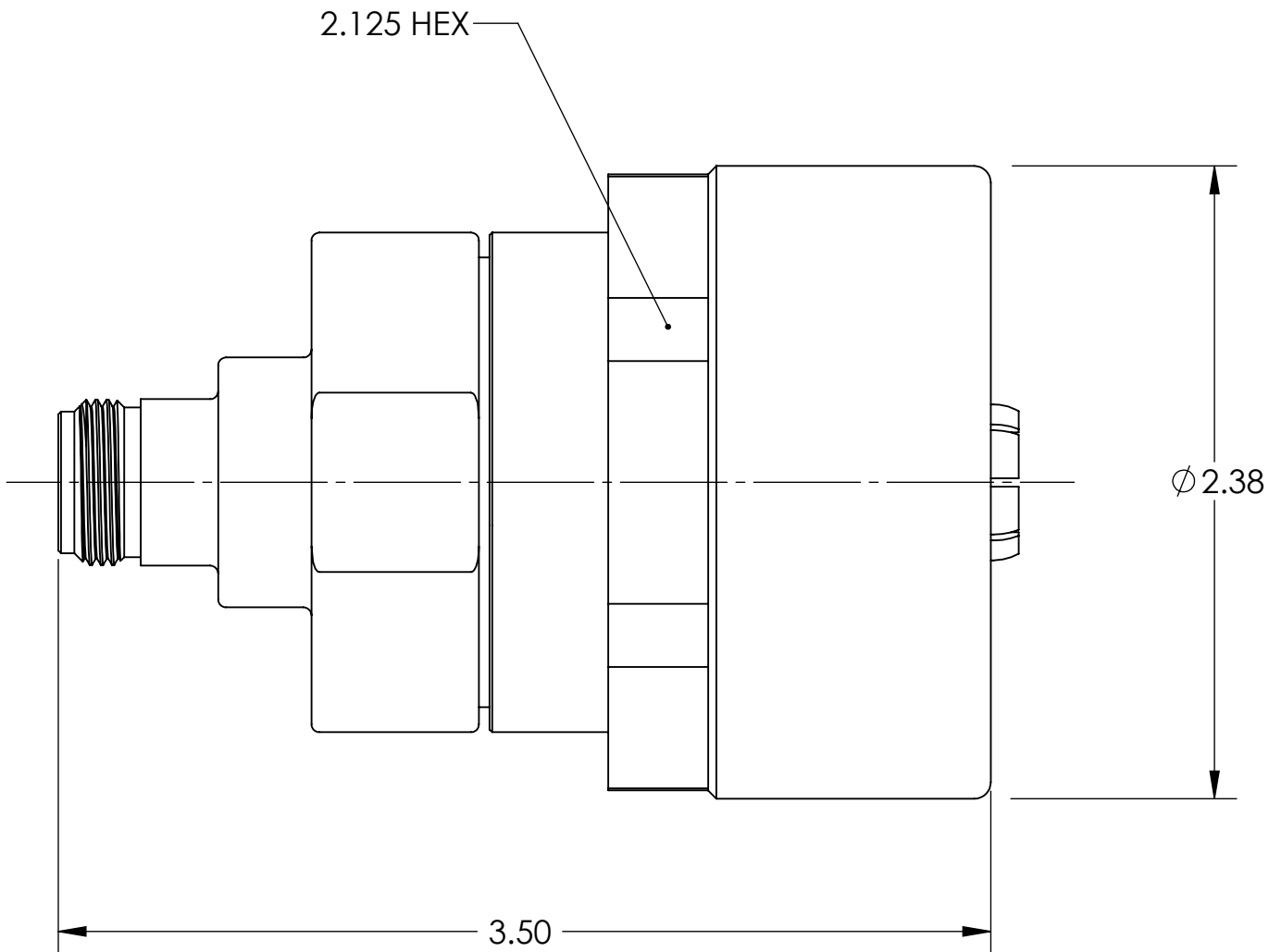
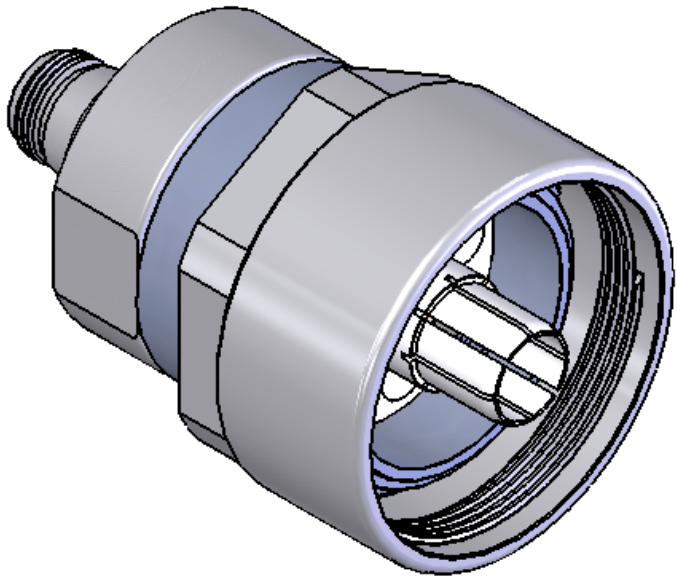


This document, including the design, configuration and mechanical features revealed herein are the sole, confidential and proprietary property of TRU Corporation. Reproduction or use thereof, in whole or part, is prohibited without the prior written consent of TRU Corporation.

REV.	DESCRIPTION	DATE	APPROVED
-	ORIGINAL ISSUE	04/09/12	TRC



ENGINEERING DATA:



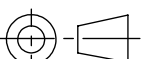
ELECTRICAL:  
IMPEDANCE: 50 OHMS NOMINAL

MECHANICAL:  
INTERFACE: N(f) PER MIL-ST-348 FIG 304.2  
MEIA-1625 PER TRU SPEC INT-MEIA-1625

MATERIAL:  
INSULATORS: PTFE (TEFLON)  
CENTER CONDUCTORS: BRASS & BERYLLIUM COPPER  
N BODY: BRASS  
OTHER METAL PARTS: STAINLESS STEEL

FINISH:  
CENTER CONDUCTORS: SILVER PLATED  
N BODY: SILVER PLATED  
OTHER METAL PARTS: PASSIVATED

NOTES:  
1. UNLESS OTHERWISE SPECIFIED; ALL DIMENSIONS ARE REFERENCE ONLY.

MATERIAL	DO NOT SCALE DRAWING		DRAWN TRC	DATE 04/05/12	 <b>TRU Corporation</b> 245 Lynnfield St, Peabody, MA 01960		
	UNLESS OTHERWISE SPECIFIED: DIMENSIONS ARE IN INCHES		ENG APPR. TRC	DATE 04/09/12			
	TOLERANCES: FRACTIONS: ± 1/64 .XX : ± .01 .XXX: ± .005 ANGLES: ± 1/2° MACHINED SURFACES: <div>63/</div>		MFG APPR.	DATE	TITLE:  MEIA-1625(m) TO N(m) ADAPTER		
			OTHER APPR. AM	DATE 04/06/12			
COMMENTS:		THIRD ANGLE PROJECTION 		SIZE <b>B</b>	DWG. NO.  TRU-11984		REV  -
surface area: sq inch		weight: lbs		CAGE CODE: 92180		SCALE: 1.5:1	SHEET 1 OF 1