



## HOLDRITE

14284 Danielson Street Poway  
CA 92064

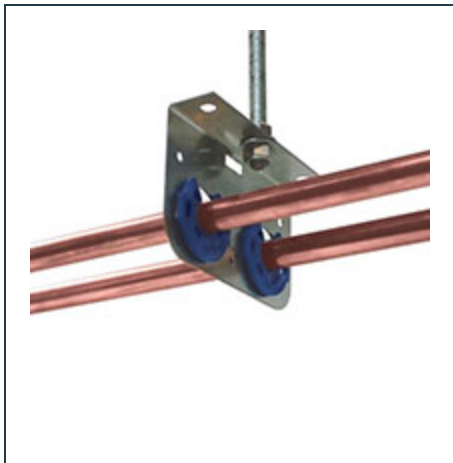
**Phone:** 800-321-0316

**Email:** sales@holdrite.com

**Website:** www.holdrite.com

## Item # 121-D, HoldRite - 121D

- Anchor directly to ceiling
- Reduces the need for overhead drilling
- Supports multiple pipe runs
- Attach to all thread
- Reduce installed costs
- Eliminate the need to cut hanger rod
- Supports 1/2", 3/4", 1" tubing
- Compatible with Holdrite inserts



## Specifications

<b>Style</b>	Dual pipe support
<b>Application</b>	Provides a 2" center line distance from structure
<b>Material</b>	20 gage CRS, galvanized
<b>Load Rating</b>	25 lb

<b>Industry Standards/Certifications</b>	UPC / IPC / IAPMO
--	-------------------

<b>Weight</b>	0.2 lb
---------------	--------