

**HOLDRITE**

14284 Danielson Street Poway  
CA 92064

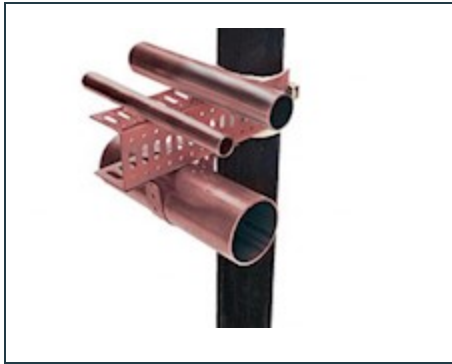
**Phone:** 800-321-0316

**Email:** sales@holdrite.com

**Website:** www.holdrite.com

## Item # 115-C, HoldRite - 115-C

The HOLDRITE® #115 and #115-C (Copper-Bonded™) are steel brackets designed to position water supply lines off the vent or waste pipe in chase walls. Supports 1/2" through 2" pipes both vertically and horizontally. Packaged with self-locking stainless steel band, screws, metal clamps, and self-adhesive isolating felt. Excellent for pre-fab applications. Supports piping prior to wall framing. Heat the pipe, not the bracket when soldering the #115-C version.



### Specifications

<b>Material</b>	16 gage CRS, Copper-Bonded™
<b>Load Rating</b>	25 Pound
<b>Industry Standards/Certifications</b>	UPC / IPC / IAPMO