

ADCRAFT®



CVYT120S Conveyor Toaster

This manual contains important information regarding your Adcraft unit. Please read this manual thoroughly prior to equipment set-up, operation, and maintenance. Failure to comply with regular maintenance guidelines outlined in this manual may void the warranty.

WARNINGS

- Do not touch any hot surfaces.
- Do not immerse the unit, cord, or plug in liquid at any time.
- Unplug the cord from an outlet when not in use and before cleaning.
- Plug only into a 3-hole grounded electrical outlet.
- Do not operate unattended.
- Do not use this unit for anything other than the intended use.
- Do not use outdoors.
- Always use on a firm, dry, and level surface at least 12" from walls or any other obstruction
- Do not use if the unit has a damaged cord or plug, in the event the appliance malfunctions, or has been damaged in any manner.
- Keep children and animals away from the unit.
- Any incorrect installation, alterations, adjustments, and/or improper maintenance can lead to property loss and injury.
- All repairs should be done by authorized professionals only.
- Ensure that the designated power supply is adequate for continual usage and the voltage is correct

INSTALLATION

1. Remove the unit and all packing materials from the carton and remove the protective covering from the unit and parts.
2. Remove tape from the discharge chute, crumb tray, and toast collector pan.
3. If the unit is not level, adjust the feet to level.
4. The toast feed ramp is installed at the factory and can be used in two positions:
 - When in the upright position, the toaster is set for automatic feed. Bread products enter the toaster by placing them on the feed ramp and releasing them.
 - For manual feeding of product, tip the feed ramp until it rests on top of the unit. In this position bread products can be manually loaded by placing them directly on the conveyor belt.
5. Install the toast crumb tray directly below the conveyor belt and below the stop pins. Insert until the front of the crumb tray meets the stop pins.

CONTROL PANEL



TO USE

1. Plug the toaster into a properly grounded electrical outlet.
2. Rotate the Rotary switch in the high-heat position.
3. Turn the Color Control to the lightest position while the unit heats up. (Note: Allow approximately 15 to 20 minutes for a warm-up period.)
4. After the warm-up period, set the Color Control to the medium position and toast two slices of bread product then re-adjust the Color Control to the desired setting. (Note: To toast moist products such as English Muffins, rye bread or whole wheat, slow the conveyor by turning the Color Control knob to a darker setting clockwise).
5. This unit can be used for one-sided toasting, such as buns and English Muffins by rotating the rotary switch to the top side heat only.
6. Never use the toaster when the crumb tray is not in place.

POWER SAVE MODE

- To go into a Power Save Mode, turn the rotary selector to Econ Mode. The toaster is operating at 25% of power.

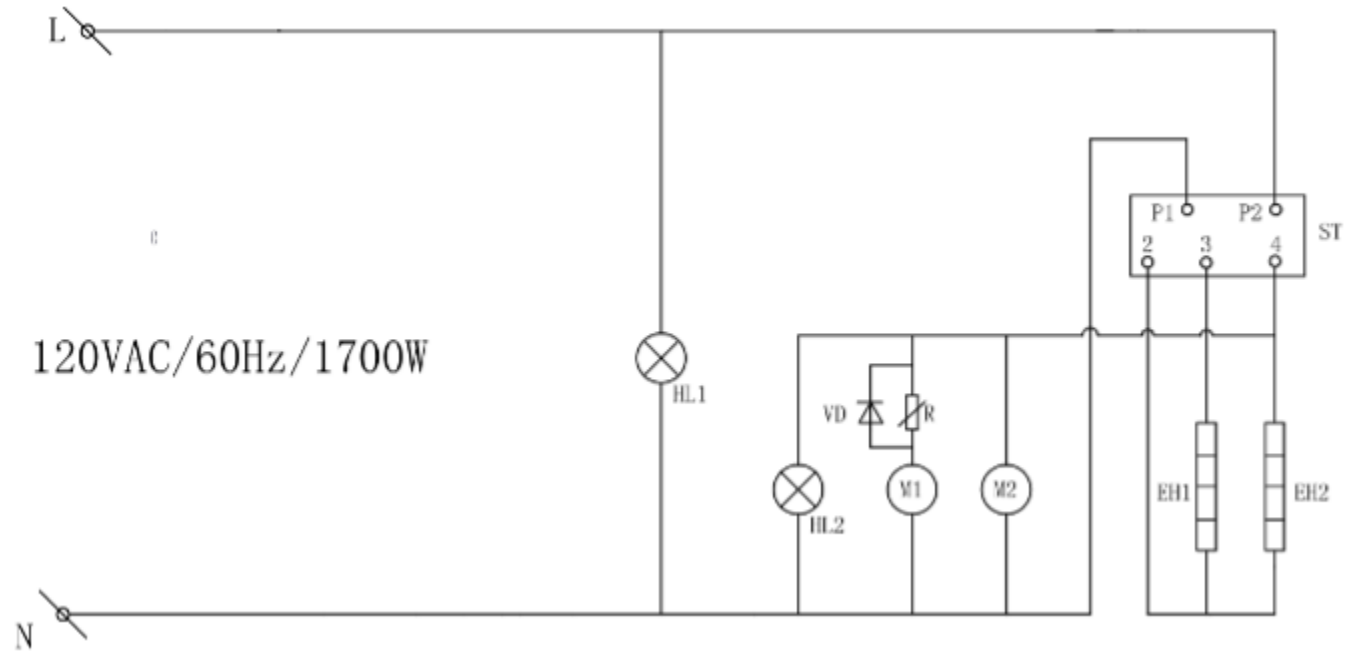
Note: To place the toaster back into full operation turn the selector back into TOAST. The unit is back up to full power within 5 minutes.

CLEANING – NOTE:

To maintain cleanliness and increase service life, the oven should be cleaned daily. Do not immerse the unit in water or any other liquid. If liquid enters the electrical compartment, it may cause a short circuit or electrical shock.

- Disconnect the power cord from the electrical outlet and allow the unit to cool down.
- To clean the exterior, wipe down with a damp cloth.
- Make sure the toaster surface is completely dry before attempting to use it again
- To clean the crumb tray, carefully slide the crumb tray out and dispose of any crumbs.
- To clean the toast feed ramp, press in the two wire spokes and remove the guide from the unit.
- Wipe clean with a soft, damp cloth. Reinstall by aligning wire spokes with holes in the toaster.
- To avoid damage, do not use abrasive cleaners or scouring pads.
- If soap or chemical cleaners are used, be sure they are completely rinsed away with clear water immediately after cleaning. Chemical residue could damage or corrode the surfaces of the unit.

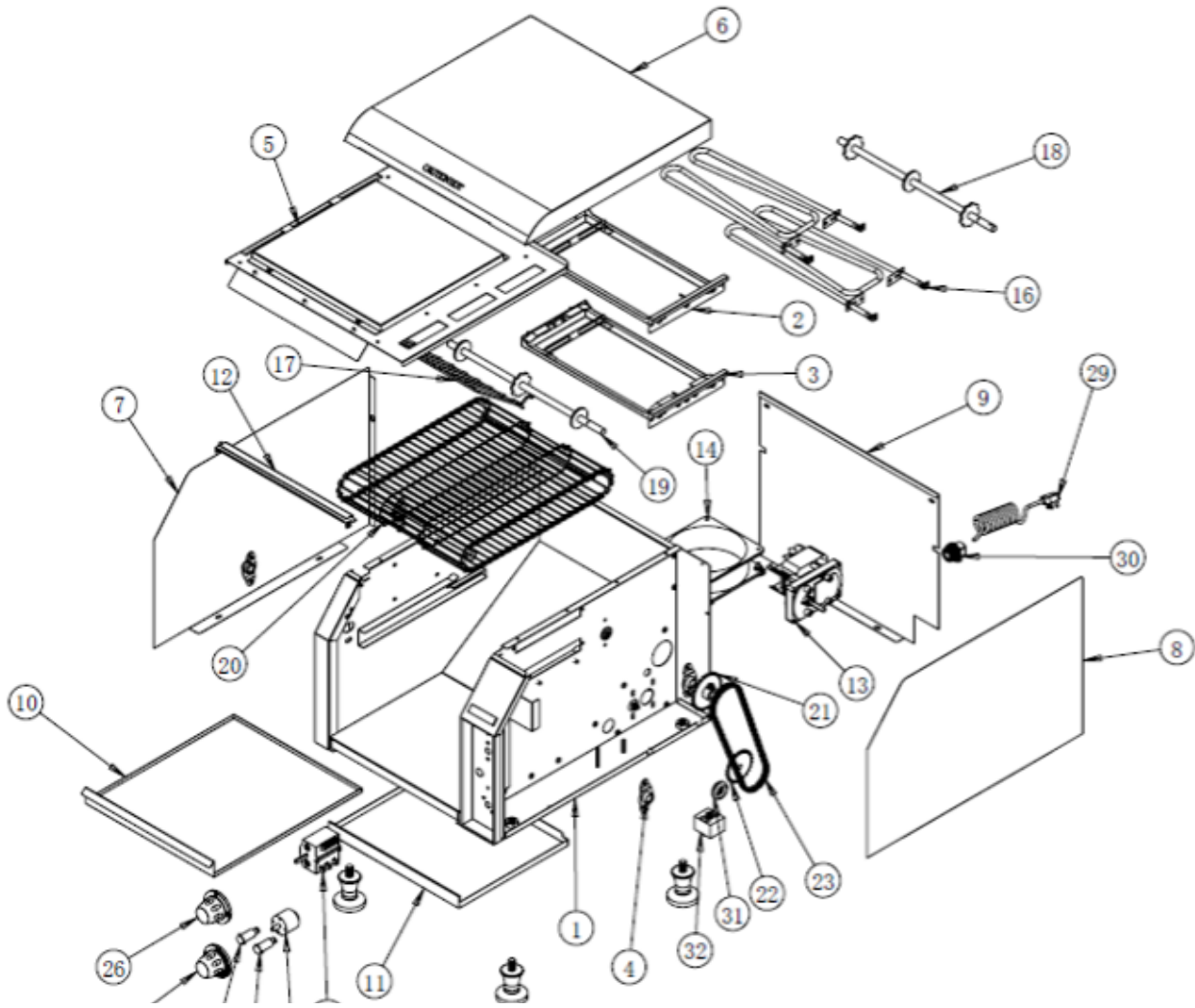
CIRCUIT DIAGRAM



EH1/EH2 – Heater element
 HL1 – Power indicator
 HL2 – Heat indicator
 M1 – Motor, for conveyor

M2 – Motor, for cooling
 ST – Position switch
 R – Adjustable rheostat
 VD – Diode

EXPLODED DRAWING



PART LIST

NUMBER	DESCRIPTION	MATERIAL	SPEC	QTY
1	Shell	AL-coated steel		1
2	Top heater support	AL-coated steel		1
3	Bottom heater support	AL-coated steel		1
4	Roller holding assembly	AL-coated steel		4
5	Chamber top cover assembly	AL-coated steel		1
6	Top cover	SUS430		1
7	Side panel, left	SUS430		1
8	Side panel, right	SUS430		1
9	Back panel	SUS430		1
10	Tray	SUS430		1
11	Tray support	SUS430		1
12	Front support	SUS430		1
13	Motor		AC120V/60HZ/ high speed 6~8RPM, low speed 1~2.5RPM	1
14	Cool fan		120V 0.35A/50HZ/60HZ	1
15	Adjustable rheostat		TT-300/35M/150R	1
16	Heat element		120V 60HZ 836W	2
17	Rack	SUS201, Nickle plated		1
18	Rear roller assembly	SUS 304		1
19	Front roller assembly	SUS 304		1
20	Conveyor belt	SUS 304, Nickel plated		1
21	Roller gear	Cast iron		1
22	Motor shaft gear	Cast iron		1
23	Chain			1
24	Gear switch			1
25	Knob, adjustable rheostat			1
26	Knob, gear switch			1
27	Power indicator		110V	1
28	Heat indicator		110V	1
29	Power supply cord		12AWG/ 105, C/300V/1.5m	1
30	Lock type bushing			1
31	Rubber bushing			1
32	Ceramic terminal	Ceramic		1
33	Rubber foot	Rubber		4

1-YEAR LIMITED WARRANTY

Admiral Craft Equipment Corp. (the "Company") warrants this product (the "Product") will be free from failures in material and workmanship for one (1) year from the date of original purchase with proof of purchase, provided that the Product is operated and maintained in conformity with the Owner's Manual. This Limited Warranty is non-transferable. During this period, your exclusive remedy is repair or replacement without charge of the Product or any component found to be defective at the Company's discretion. If the Product or any component is no longer available, the Company will replace it with a similar one of equal or greater value. This Limited Warranty is void if the Product is used with voltage other than 120 Volts. **THIS WARRANTY IS IN LIEU OF ALL IMPLIED WARRANTIES, INCLUDING WARRANTIES OF MERCHANTABILITY, FITNESS FOR A PARTICULAR PURPOSE, PERFORMANCE, OR OTHERWISE, WHICH ARE HEREBY EXCLUDED. IN NO EVENT SHALL THE COMPANY BE LIABLE FOR ANY DAMAGES, WHETHER DIRECT, INDIRECT, INCIDENTAL, FORSEEABLE, CONSEQUENTIAL, OR SPECIAL ARISING OUT OF OR IN CONNECTION WITH THIS PRODUCT INCLUDING DAMAGES ARISING FOR FOOD OR BEVERAGE SPOILAGE CLAIMS.**

You may have other legal rights depending upon where you live. Some States or Provinces do not allow limitations on warranties so the foregoing may not apply to you.

WARRANTY EXCLUSIONS

IMPROPER ELECTRICAL CONNECTIONS:

The Company is not responsible for the repair or replacement of failed or damaged components resulting from electrical power failure, the use of extension cords, low voltage, or voltage spikes to the Product.

IMPROPER USAGE:

This Limited Warranty does not cover failure or other damages to the Product resulting from (i) improper usage or installation or failure to clean and/or maintain the Product as set forth in the Owner's Manual; or (ii) accident, misuse, abuse, negligence, or modification or alteration of the Product.

CONSUMABLES:

This Limited Warranty does not include consumables or wear-and-tear items such as legs, feet, plastic component parts, splash shields, filters, gaskets, and non-stick cooking surfaces.

ADJUSTMENTS & CALIBRATIONS:

Leveling, tightening of fasteners, or utility connections normally associated with the original installation are the responsibility of the dealer, installer, or the end user and not the responsibility of the Company and will not be considered warranty issues.

If you think the Product has failed, or requires service, within its warranty period, please contact the Company's Customer Care Department through our website at: www.admiralcraft.com "Service" --> "Technical Support Request". A receipt proving the original purchase date will be required for all warranty claims, handwritten receipts are not accepted. You may also be required to return the Product for inspection and evaluation. Return shipping costs are not refundable. The Company is not responsible for returns lost in transit.

This Limited Warranty is Valid only in the USA and Canada.