



Modern Mesh Ergonomic Task Chairs & Stools



130
Modern Mesh
Ergonomic Task Chair



130-AA3
Modern Mesh
Ergonomic Task Chair with Arms

Ergonomic Task Chair & Stool

- 250 lbs. weight capacity
- Modern design
- 360° swivel seat
- Stain-resistant fabric
- Breathable mesh
- 3" thick CAL 177 foam upholstered seat
- Gas lift seat height adjustment
- Seat pitch adjustment
- Back height adjustment
- Back pitch adjustment
- Built-in lumbar support
- Adjustable height & width arms (AA3 models only)
- Meets or exceeds ANSI/BIFMA standards
- Optional glides and hard floor casters available



130-DK
Modern Mesh
Ergonomic Task Stool



130-AA3-DK
Modern Mesh
Ergonomic Task Stool with Arms

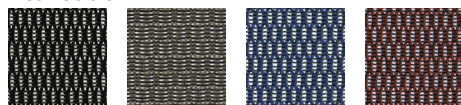
130 & 130-AA3

Seat Size: 19" W x 17.75" D
 Back Size: 17.25" W x 17.75" H
 Seat Height: 19.25" to 23.50"
 Arm Height: 26" to 33"
 Int. Arm Width: 17.75"
 Ext. Arm Width: 24.75"
 Overall Height: 38.50" to 42.75"
 Overall Width: 26.25"
 Overall Depth: 26.25"

130-DK & 130-AA3-DK

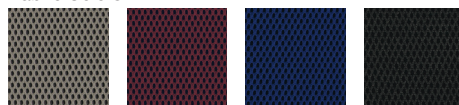
Seat Size: 19" W x 17.75" D
 Back Size: 17.25" W x 17.75" H
 Seat Height: 27.25" to 31.50" or
 30.25" to 34.50"
 Arm Height: 33.75" to 40.75" or
 36.75" to 43.75"
 Int. Arm Width: 17.75"
 Ext. Arm Width: 24.75"
 Overall Height: 44.50" to 48.75" or
 47.50" to 51.75"
 Overall Width: 26.25"
 Overall Depth: 26.25"

Mesh Colors



Black Mesh Gray Mesh Navy Mesh Wine Mesh

Fabric Colors



A01-Gray A03-Wine A04-Navy A05-Black