



6" SUPER SLOPE CEILING LED - 900 LUMENS WARMDIM® IC NEW CONSTRUCTION HOUSING

Project: _____

Fixture Type: _____

Location: _____

Contact/Phone: _____



Bringing Warmth to LED Dimming™

SUPER SLOPE:

7/12 TO 12/12 PITCH (30° TO 45°)

IC928LED (WD G4 09LM)

OPEN TRIMS

PRODUCT DESCRIPTION

Dedicated LED, Air-Loc® sealed slope ceiling new construction housing with patented WarmDim® technology • LED color temperature warms while dimming to emulate the dimming performance of traditional incandescent light sources • IC rated construction housing can be completely covered with insulation • Fully sealed housing stops infiltration and exfiltration of air, reducing heating and air cooling costs without the use of additional gaskets • LED housing is designed to provide 50,000 hours of life and is compatible with standard Juno trims • 5 year limited warranty on LED components.

ENVIRONMENTALLY FRIENDLY, ENERGY EFFICIENT

- No harmful ultraviolet or infrared wavelengths
- No lead or mercury
- Comparable light output to 26W compact fluorescent

PRODUCT SPECIFICATIONS

LED Light Engine Proprietary patented micro processor controlled light engine emulates dimming performance of incandescent light source • Extruded heat sink and cast aluminum slider plate integrated directly with housing provides superior thermal management to ensure the long life of the LED • Replaceable light engine mounts directly to slider plate • 3000K color temperature at full lumen output • 90 CRI minimum throughout dimming range • Design covered under US Patent 8,710,754.

Optical System Computer-optimized internal reflector with specular finish coupled with a high transmission diffusing lens conceals the LEDs and produces uniform aperture luminance • Adjustable slider plate to position LEDs/reflector perpendicular to floor • Plate includes 1/4" adjustment indicators for consistent alignment.

Aesthetic Trim Selections Compatible with a selection of existing Juno trims • Shadow free, knife edge design blends seamlessly into ceiling.

LED Driver Dedicated 120 volt driver • Power factor > 0.9 • Dimmable with the use of most incandescent, magnetic low voltage and electronic low voltage wall box dimmers • For a list of compatible dimmers, see [JUNOICLED-DIM](#) • Mounted inside housing on a removable J-box cover for ease of maintenance.

Life Rated for 50,000 hours at 70% lumen maintenance.

Labels ENERGY STAR® Certified when used with select baffle and cone trims • Certified to high efficacy requirements of California T24 JA8-2016 with select trims • UL listed for U.S. and Canada through-branch wiring, damp locations • Union made • UL and cUL listed.

Testing All reports are based on published industry procedures; field performance may differ from laboratory performance.

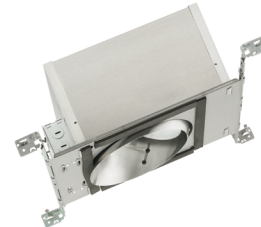
Specifications subject to change without notice.

HOUSING FEATURES

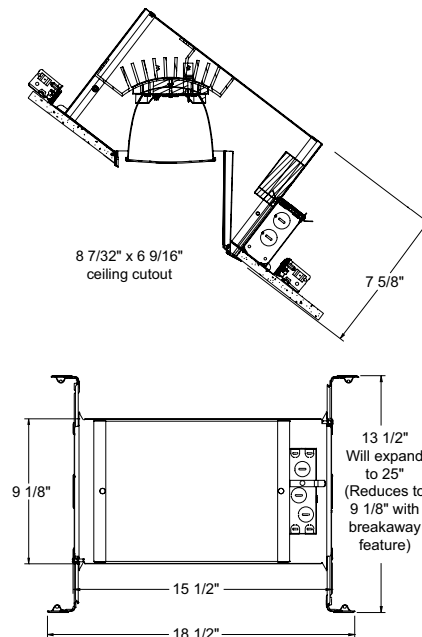
Housing Designed for use in IC (insulated ceiling) or non-IC construction • .032" aluminum housing sealed for Air-Loc compliance • Access door for junction box accessibility • Insert skirt is vertically adjustable to accommodate up to a 1" ceiling thickness.

Junction Box Pre-wired junction box provided with (5) 1/2" and (1) 3/4" knockouts, (4) non-metallic sheathed cable connectors and ground wire, UL and cUL listed for through-branch wiring, maximum 8 No. 12 AWG 90° C branch circuit conductors (4 in, 4 out) • Junction box provided with removable access plates • Knockouts equipped with pryout slots • Push-in electrical connectors supplied as standard for fast, secure installation.

Mounting Frame 22-gauge die-formed galvanized steel mounting frame • Rough-in section (junction box, mounting frame, housing and bar hangers) fully assembled for ease of installation.



DIMENSIONS



Real Nail® 3 Bar Hangers Telescoping Real Nail® 3 system permits quick placement of housing anywhere within 24" O.C. joists or suspended ceilings • Includes removable nail for repositioning of fixture in wood joist construction • Integral T-bar mounting feature for suspended ceilings • Design covered under US Patent D552,969.

6" SUPER SLOPE CEILING LED - 900 LUMENS WARM DIM[®] IC NEW CONSTRUCTION HOUSING

SUPER SLOPE: 7/12 TO 12/12 PITCH (30° TO 45°)

IC928LED (WD G4 09LM) OPEN TRIMS

ELECTRICAL DATA DEDICATED 120 VOLT ONLY DRIVER OPTION

120V	
Input Power	18.1W (+/-5%)
Input Current - Max	0.15A
Frequency	50/60Hz
EMI/RFI	FCC Title 47 CFR, Part 15, Class B (residential)
Minimum starting temp	-25°C

ORDERING INFORMATION

Housing and trim can be ordered together or separate, but will always ship separately.

Example: IC928LED WD G4 09LM 30K 90CRI 120 FRPC

Series	Dynamic Feature	Generation	Lumens	Color Temperature	CRI	Voltage	Driver
IC928LED 6" LED Super Slope Ceiling New Construction IC Hsg	WD Warm Dim	G4 Generation 4	09LM 900 Nominal Lumens	30K 3000K	90CRI 90+ CRI	120 120V	FRPC Forward/Reverse Phase Cut

Trim/Description

	604 BBRZ¹ 6" Super Slope Downlight Baffle Trim - Black Baffle, Bronze Trim Ring		602 BWH¹ 6" Super Slope Downlight Cone Trim - Black Cone, White Trim Ring
	604 BBL¹ 6" Super Slope Downlight Baffle Trim - Black Baffle, Black Trim Ring		602 CWH 6" Super Slope Downlight Cone Trim - Clear Alzak [®] Cone, White Trim Ring
	604 BSC¹ 6" Super Slope Downlight Baffle Trim - Black Baffle, Satin Chrome Trim Ring		602 GWH 6" Super Slope Downlight Cone Trim - Gold Cone, White Trim Ring
	604 BWH¹ 6" Super Slope Downlight Baffle Trim - Black Baffle, White Trim Ring		602 HZSC 6" Super Slope Downlight Cone Trim - Haze Cone, Satin Chrome Trim Ring
	604 WWH¹ 6" Super Slope Downlight Baffle Trim - White Baffle, White Trim Ring		602 HZWH 6" Super Slope Downlight Cone Trim - Haze Cone, White Trim Ring
			602 WHZBRZ 6" Super Slope Downlight Cone Trim - Wheat Haze Cone, Bronze Trim Ring
			602 WHZWH 6" Super Slope Downlight Cone Trim - Wheat Haze Cone, White Trim Ring
			602 WWH 6" Super Slope Downlight Cone Trim - White Cone, White Trim Ring

Trim Size: 602 and 604 - 9 3/16" x 8 3/16" O.D.

Alzak is a registered trademark of Alcoa Corp.

Note: In Canada when insulation is present, Type IC fixtures must be used.

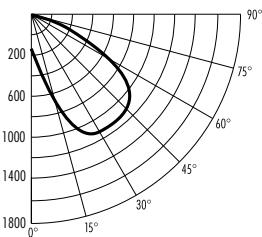
¹Not ENERGY STAR[®] Certified.

PHOTOMETRIC REPORT

Test Report #: PT02140802
Catalog No: IC928LED WD G4 09LM 30K 90CRI 120 with 604 WWH Trim

Luminaire Spacing Criterion: 3.38

Luminaire LPW: 53



CANDLEPOWER DISTRIBUTION (Candelas)

Degrees Vertical	0°
0	187
5	300
10	483
15	712
20	934
25	1099
30	1184
35	1199
40	1181
45	1170
50	1123
55	955
60	663
65	433
70	264
75	128
80	37
85	4
90	0

AVERAGE INITIAL FOOTCANDLES

Multiple Units (Square Array, 60'x60' room)
Ceiling 80% Wall 50% Floor 20%

Spacing	RCR1	RCR3	RCR5
4.0'	63	49	39
5.0'	40	31	25
6.0'	28	22	17
7.0'	23	17	14
8.0'	18	14	11
9.0'	14	11	8
10.0'	10	8	6

ZONAL LUMEN SUMMARY

Zone	Lumens	%Lamp	%Fixture
0 - 30°	248	N/A	26.2
0 - 40°	454	N/A	47.9
0 - 60°	829	N/A	87.5
0 - 90°	948	N/A	100.0

INITIAL FOOTCANDLES (One Unit, 17.8W, 49.5° Beam)

Distance to Illuminated Plane (Feet)	Footcandles Beam Center	Beam Diameter
4	74.9	3.7'
6	33.3	5.5'
8	18.7	7.4'
10	12.0	9.2'

LUMINANCE (Average cd/m²)

Degrees	Average Luminance
45	107095
55	107682
65	66236
75	31977
85	2970