

# 3-IN-1 BUTANE SOLDERING IRON

Item Number W2081

## OWNER'S MANUAL

### SPECIFICATIONS:

Tank Capacity ..... 8.5ml  
Max. Operating Time ..... 30-40 mins.  
Blow Torch Temp. Max. .... up to 2372°F (1300°C)  
Solder Tip Temp. Max. .... up to 752°F (400°C)  
Hot Blower Temp. Max. .... up to 932°F (500°C)

Technical specifications are subject to change without notice.

### WARNING!

**READ, UNDERSTAND AND FOLLOW ALL INSTRUCTIONS AND WARNINGS BEFORE OPERATING THIS TOOL. FAILURE TO DO SO MAY RESULT IN PERSONAL INJURY AND/OR PROPERTY DAMAGE AND WILL VOID WARRANTY.**

*Some dust, peelings, residue, and vapors caused by soldering and paint removal activities contain chemicals known to the State of California to cause birth defects or other reproductive harm. An example of a chemical would be flux fumes from soldering and de-soldering (do not use a heat tool to remove lead-based paint). Your risk from exposure varies, depending on how often you do this type of work. To reduce your exposure to these chemicals: work in a ventilated area, and work with approved safety equipment, such as dust masks that are specially designed to filter out microscopic particles.*



Performance Tool®

### 1 YEAR WARRANTY

PERFORMANCE TOOL® extends only the following warranties, and only to original retail purchasers. These warranties give specific legal rights. Except where prohibited by local law, the law of the State of Washington governs all warranties and all exclusions and limitations of warranties and remedies. There may be other rights which vary from state to state.

PERFORMANCE TOOL® warrants the product to be free from defects in materials and workmanship under normal use and service. A defective product may be returned for a free replacement within 90 days from the date of purchase, provided that product is returned to place of purchase immediately after discovery of defect. After 90 days and up to one year from date of purchase, PERFORMANCE TOOL® will replace at no charge any parts which our examination shall disclose to be defective and under warranty. These warranties shall be valid only when a sales receipt showing the date of purchase accompanies the defective product or defective part(s) being returned. For part(s) after 90 days, please remit your request, postage prepaid to: PERFORMANCE TOOL, P.O. Box 88259 Tukwila, WA 98138

These warranties exclude blades, bits, punches, dies, bulbs, fuses, hoses, and other consumables which must be replaced under normal use and service. These warranties shall not apply to any product or part which is used for a purpose for which it is not designed, or which has been repaired or altered in any way so as to affect adversely its performance or reliability, nor shall these warranties apply to any product or part which has been subject to misuse, neglect, accident or wear and tear incident to normal use and service.

PERFORMANCE TOOL® does not authorize any other person to make any warranty or to assume any liability in connection with its products.

Except for warranties of title and the limited express warranties set forth above, PERFORMANCE TOOL® makes no express or implied warranties of any kind with respect to its products. In particular, PERFORMANCE TOOL® makes no implied warranty of merchantability and no implied warranty of fitness for any particular purpose, except that for goods purchased primarily for personal, family or household use and not for commercial or business use, PERFORMANCE TOOL® makes an implied warranty of merchantability (and, if otherwise applicable, an implied warranty of fitness for a particular purpose), but only for the particular qualities or characteristics, and for the duration, expressly warranted above.

The laws on limitation of implied warranties may differ from state to state, so the above limitations may not apply in all cases.

PERFORMANCE TOOL® shall not be liable for consequential, incidental or special damages resulting from or in any manner related to any product, or to the design, use, or any inability to use the product. The sole and exclusive remedy for a defective product or part shall be the repair, or replacement thereof as provided above. The laws on limitation of remedies or on consequential, incidental or special damages may vary from state to state, so the above limitations may not apply in all cases.

© Copyright 2019 WILMAR CORPORATION, P.O. Box 88259 Tukwila, WA 98138

**PT**  
Performance Tool

## SAFETY INFORMATION

1. Keep the torch out of reach of children.
2. Read directions carefully before use.
3. The burn tip and other accessory tips get hot in operation. Do not touch the tip or accessories, or place them on flammable objects.
4. Always have a fire extinguisher or bucket of water near the torch work area.
5. Always point away from eyes and body when igniting or operating. Flame is invisible in sunlight, it can cause injury if not used with extreme caution.
6. Under no circumstances should you attempt to repair a damage torch.
7. Do not store under direct sunlight or anywhere that will exceed 104 ° F / 40 ° C
8. Do not immerse in water.
9. Make sure the adjustment knob is firmly closed and the flame is completely extinguished after using. If you hear a hissing sound the valve is open.
10. Use only in well ventilated areas.

## PARTS DESCRIPTION



1.....	Blow Torch Head
2.....	Torch Head Retainer
3.....	Ignition Switch
4.....	Butane Tank
5.....	Kick Stand
6.....	Filler Valve
7.....	ON/OFF Switch
8.....	Flame Level Adjust
9.....	Stand w/Sponge
10.....	Solder
11.....	Safety Cap
12.....	Blower Tip
13.....	Scoop Tip
14.....	Polyfoam Cutter Tip
15.....	Hot Knife Tip
16.....	Soldering Tip
17.....	Double Edge Tip
18.....	Needle Point Tip

Fig. 5 – Blow Gun configuration

Fig. 7 – Heat Gun configuration

Fig. 8 – Soldering configuration



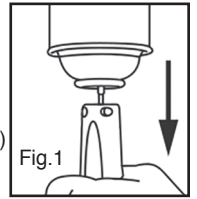
## OPERATION

### First time use:

**When using the copper tip for the first time, please preheat the soldering iron to the temperature of the solderable wire (about 30 seconds).**

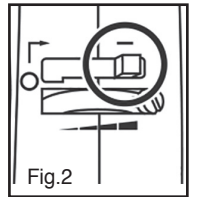
### Filling Fuel Tank

1. Use only high quality butane gas.
2. Before filling make sure that the off / on switch is turned to the "O" position.
3. Holding the appliance upside down insert the butane gas refill nozzle vertically into the gas refill valve. (Fig. 1) Push the butane gas refill nozzle down into the gas refill valve until the fuel tank is full. (liquid gas will escape from the gas refill valve.)
4. After filling the unit allow the gas to stabilize for a few minutes before igniting.



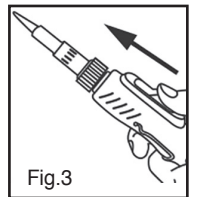
### Lighting

1. When igniting the torch ensure the torch is held in the upright position.
2. Turn the off/on switch to the "-" position. (Fig. 2 & 3)
3. After igniting, adjust the flame adjustment level to generate a suitable flame for your needs. (Fig. 4) If torch does not ignite repeat the igniting process.



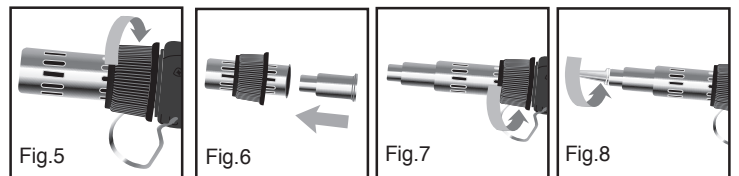
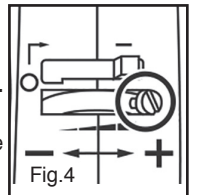
### Using Blow Torch

1. **Please ensure torch is cool to touch before removing tip.** Remove the soldering tip by unscrewing the Blow Head which will then allow the soldering tip to be removed. Replace Blow Torch Head to the unit.
- 2.) To ignite, turn the off/on switch to the "-" position. (Fig. 2 & 3)
- 3.) After igniting, adjust the flame adjustment level to generate a suitable flame for your needs. (Fig. 4)



### Using Soldering Iron

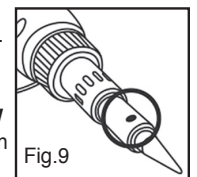
1. **Please ensure torch is cool to touch before removing tip.** Unscrew the Blow Torch Head and slide off. (Fig. 5) Insert Air Blower Tip into Blow Torch Sleeve. (Fig. 6) Replace the Blow Torch Head containing Air Blower Tip by screwing clockwise. (Fig. 7) Choose Soldering Tip and screw into Air Blower Tip. (Fig. 7)
2. To ignite, turn the off/on switch to the "-" position. (Fig. 2 & 3)
3. After igniting, adjust the flame level to maximum to preheat the torch. (Fig. 4)
4. After preheating, adjust the flame the flame to suit your requirements.



### Important Reminder

Upon catalyst turning red (located in the solder head - refer Fig. 9), the unit is ready to use for solder or blower function.

**IF BLUE FLAME APPEARS IN THE BLOWER TIP VIEW HOLE (Fig.9),REIGNITE TRIGGER.** If flame does not turn orange then turn off and allow tool to cool down. Burning at too high of a temperature for too long of a duration will damage and possibly melt the torch. Please pay attention.



## STORAGE

Make sure that the torch is turned off and cool before storing or leaving unattended.