



WOODEN COLD PLUNGE TUB USER GUIDE

MODELS
CP-C6242CDR



DON'T WAIT! REGISTER NOW!

Register your product within 90 days to ensure your sauna is recognized as an official purchase and is eligible for warranty coverage.

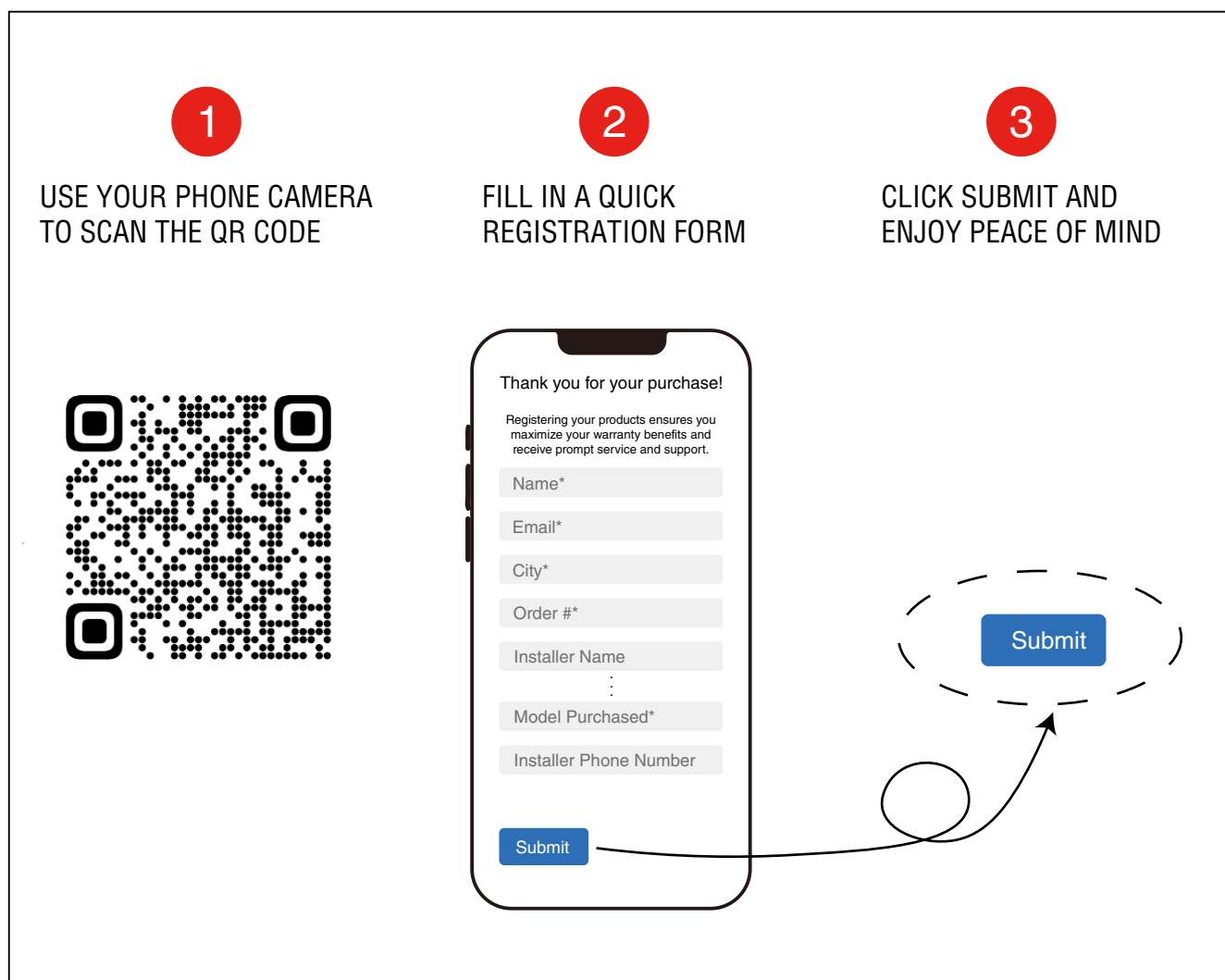
register online at www.saunaspa.com/register or scan the QR code at
Page 2.

PRODUCT REGISTRATION*

IMPORTANT: Warranty will not be recognized unless product is registered.

Register online at www.saunaspa.com/register . or Scan the QR code below.

Registering online is fast, secure, and ensures we receive your information.



WARRANTY AND REPAIR GUIDELINES

KPLUNGE warrants that this cold plunge tub be free from manufacturer defects and malfunctions.

Please be advised failure to comply with any of the following will VOID the warranty.

1. Tub must registered within 90 days of delivery.

Warranty Period:

This product is covered under warranty for a period of 12 months for cold plunge, commencing from the date of purchase.

USER INSTRUCTIONS

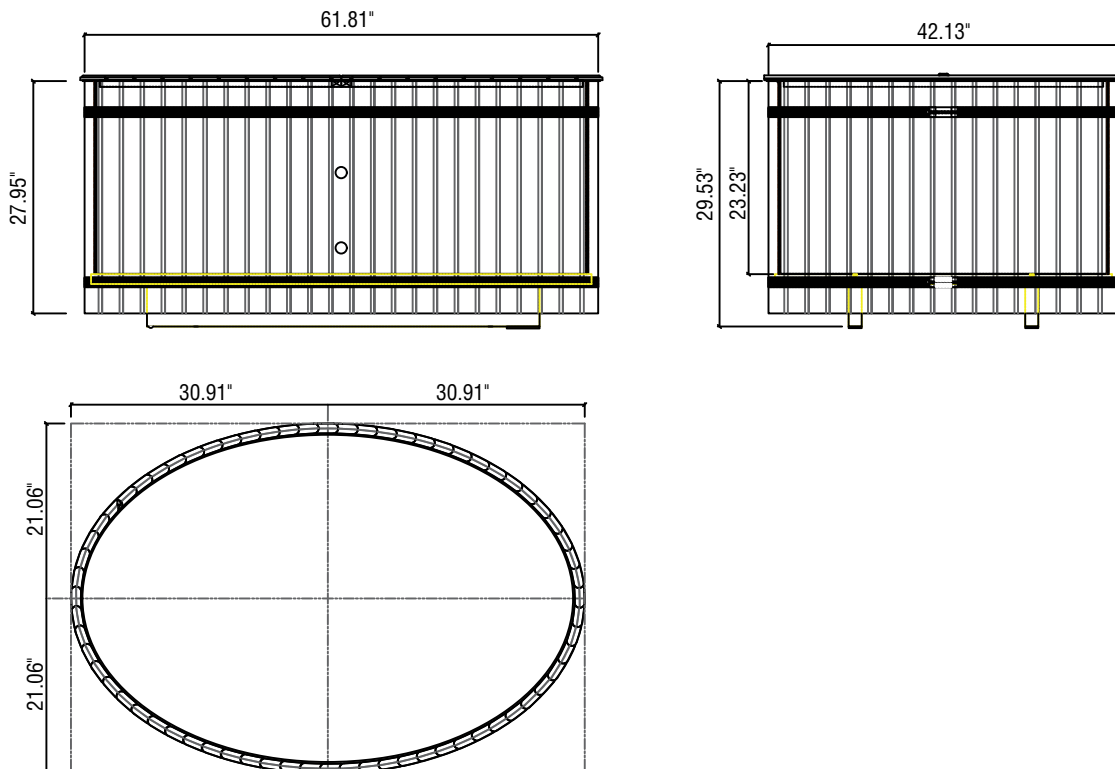
Safety Regulations

1. The bathtub must be installed and used in accordance with this manual.
2. Children may use the tub only under adult supervision.
3. Individuals with skin conditions, such as erosion or unhealed surgical wounds, should not use the tub.
4. Use with caution after consuming alcohol.
5. Consult your doctor before use if you feel unwell, are taking medication, or are pregnant.
6. Keep hair dryers, lamps, cell phones, tablets, radios, and other electrical devices at least 5 feet (150 cm) away from the chiller to prevent electrical hazards.
7. Avoid overfilling the tub before getting in. Overfilled water can spill, creating slippery surfaces. Exercise caution when entering or exiting the tub to prevent falls.

SPECIFICATIONS

SPECS	HN24605C060
Dimensions(L x W x H)	61.81" x 42.13" x 27.95" (1569 x 1070 x 710mm)
Water Volume	640L (169gal)
Capacity	1 person
Material	Cedar wood + Stainless steel

PRODUCT SIZE CHART



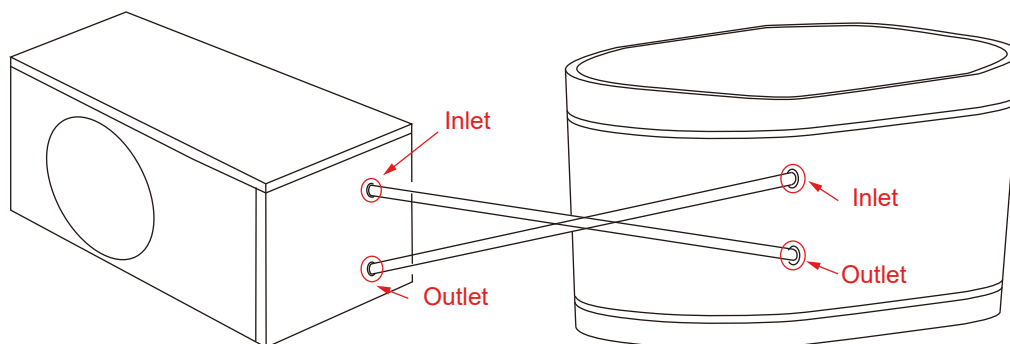
USAGE

Connect to Chiller

A Chiller is not included. When connecting tub to your existing chiller (Or when purchasing a KPLUNGE Chiller) it is important to make sure the hoses are installed properly.

Ensure the tub's outlet valve is connected directly to the chiller inlet valve.

Then, make sure the chiller outlet valve is connected directly to the tub's inlet valve. Use the provided adapter if necessary.



Fill with water

Fill the bathtub with water until the water level is above the outlet.

Expel air from the system

Ensure there is no air in the water system. Insert a hose(not included) into the inlet hole inside the tub and inject water into the hole, until no more bubbles come out from Outlet hole.

IMPORTANT! If the air is not completely flushed out of the chiller, its cooling and heating functions will be significantly reduced.

MAINTENANCE

Maintenance for wooden part

1. Clean the tub with a soft brush or sponge, and rinse it with clean water after removing any dirt. Do not use sharp objects or hard brushes to scrape the wooden tub, as they may damage its waterproofing.
2. Depending on environmental factors and usage, it is recommended to repaint the wooden tub every 1-2 years, if needed.
3. To prevent hoses from rupturing in temperatures below freezing (32°F or 0°C), it is essential to drain all water from the hoses. When restarting later, the pipes can be refilled with water. This practice helps avoid damage caused by the expansion of freezing water, which can lead to pipe rupture.

Maintenance for stainless steel part

1. Soak the liner in warm water and chlorine bleach before cleaning. Avoid using products that contain alkaline, as they can damage the liner's protective layer.
2. Use a soft brush, soft sponge, or scouring pad to clean any dirt and rinse it off with water. Do not scrape the stainless steel parts with any sharp or stiff brush or sponge, as this can damage the surface of the liner.

ACCESSORIES

1. Wooden cover and step

Use cover when using the tub, and the step can be placed next to the tub to make it easier for users to get in and out of the tub.



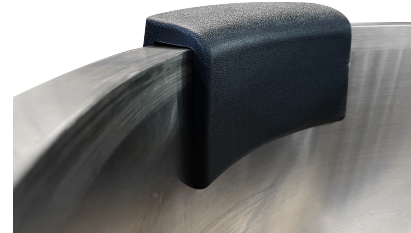
2. Thick foldable cover

When the chiller is operating, you can use the thick foldable cover for better insulation. Engage the children safety lock to prevent children from drowning.



3. Headrest

Place the headrest on the tub wall to rest while using the tub.



4. Non-slip mat

The non-slip mat is placed at the bottom of the tub to prevent users from slipping when entering or exiting the tub.



5. Strainer

Place the strainer into the bottom hole of the inner tub to prevent debris, such as leaves and hair, from entering the chiller.

Attention: Please clean the strainer regularly! Otherwise, it may affect the normal operation of the chiller.

