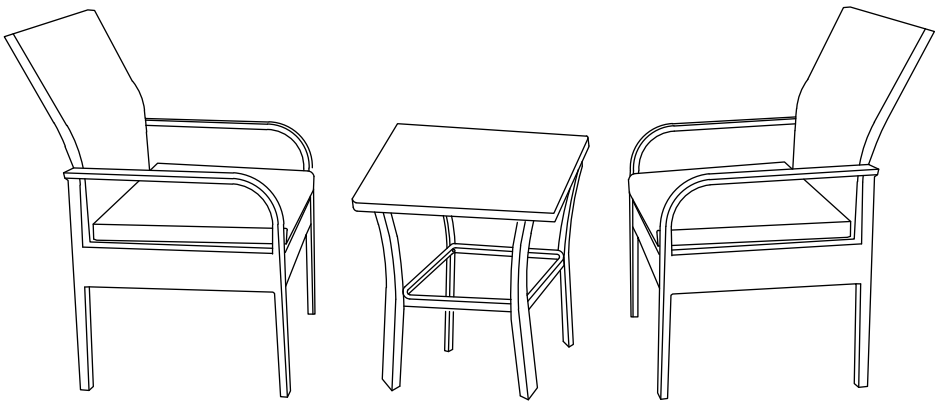


# INSTRUCTION MANUAL



**3 - Piece Rattan Wicker Modern Seating Set**  
**SKU: P141-3PC**

## ! NOTICE

### Do not overtighten screws. (Insert all screws before tighten screws.)

- Please do not exceed the weight limitations of this item.
- Do not stand on or use any part of this item as a step ladder.
- Firmly secure all bolts, screws and nuts before use.
- Reconfirm that all bolts, screws, and nuts are secure every 90 days.
- Do not use or store this item in the proximity of open flame or flammable/combustible chemicals.
- Be aware that some parts are heavy and have sharp edges.

## TOOLS REQUIRED



ALLEN WRENCH  
(PROVIDED)



CHAIR  
330 LBS  
CAPACITY



TABLE  
110 LBS  
CAPACITY



1 PERSON  
ASSEMBLY



UP TO 60 MIN.  
ASSEMBLY

## HARDWARE

1

M6 x 30mm  
BOLT



16 PCS

2

M6 x 40mm  
BOLT



8 PCS

3

M6 x 15mm  
BOLT



8 PCS

4

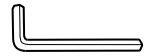
M6 WASHER



32 PCS

5

ALLEN  
WRENCH

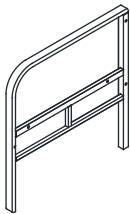


1 PC

## PARTS

A

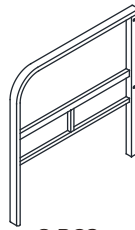
CHAIR RIGHT SIDE



2 PCS

B

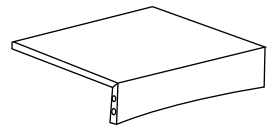
CHAIR LEFT SIDE



2 PCS

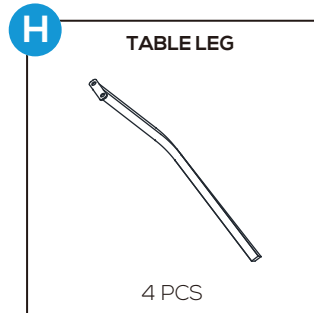
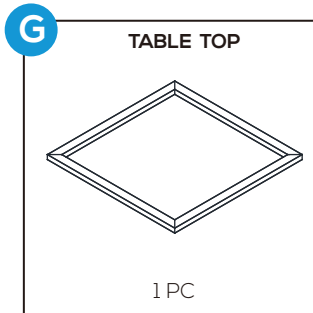
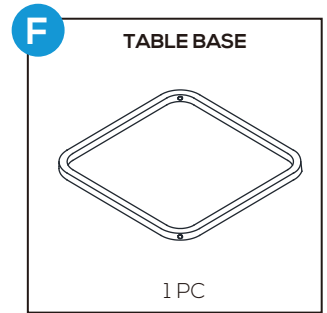
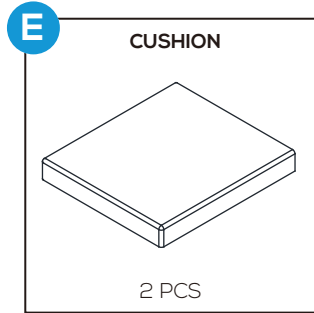
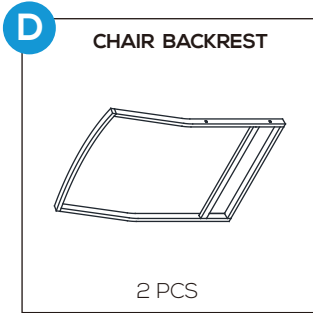
C

CHAIR SEAT



2 PCS

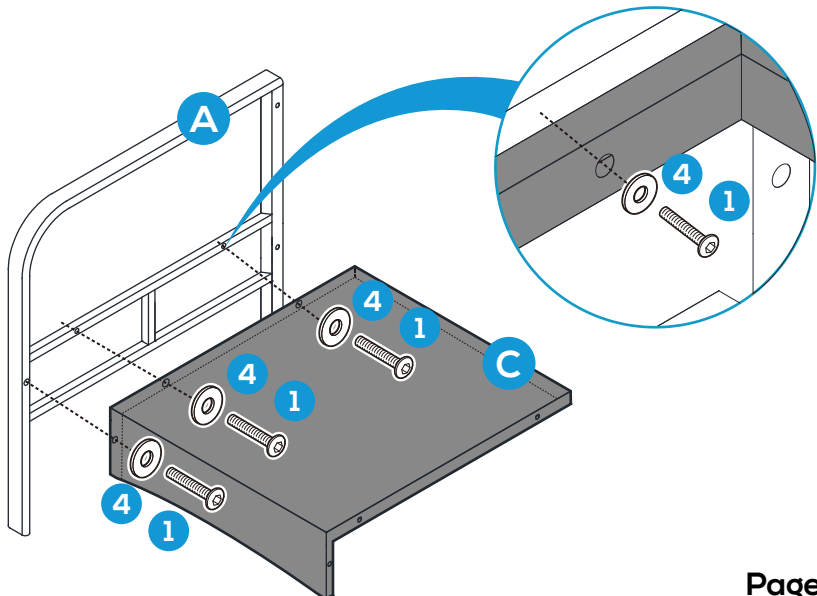
## PARTS



## PRODUCT ASSEMBLY - CHAIR

**1**

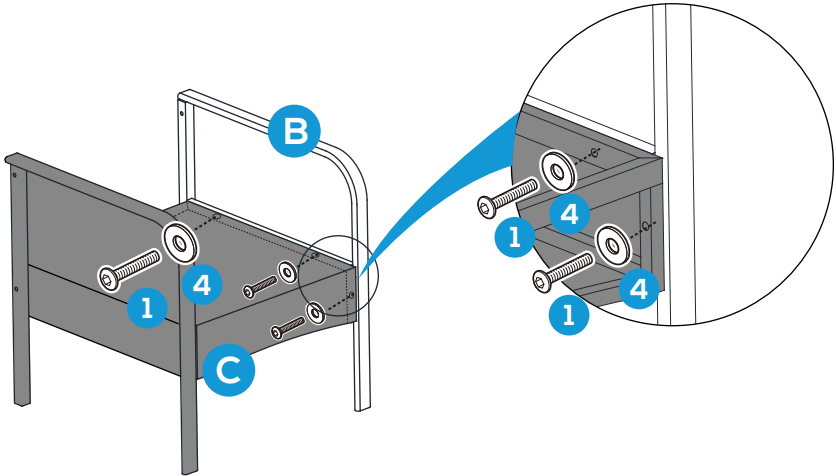
Attach part C Chair Seat to part A Chair Right Side with 3 PCS of part 1 bolt and 3 PCS of part 4 washer.



## PRODUCT ASSEMBLY - CHAIR

2

Attach part C Chair Seat to part B Chair Left Sideb with 3 PCS of part 1 bolt and 3 PCS of part 4 washer.

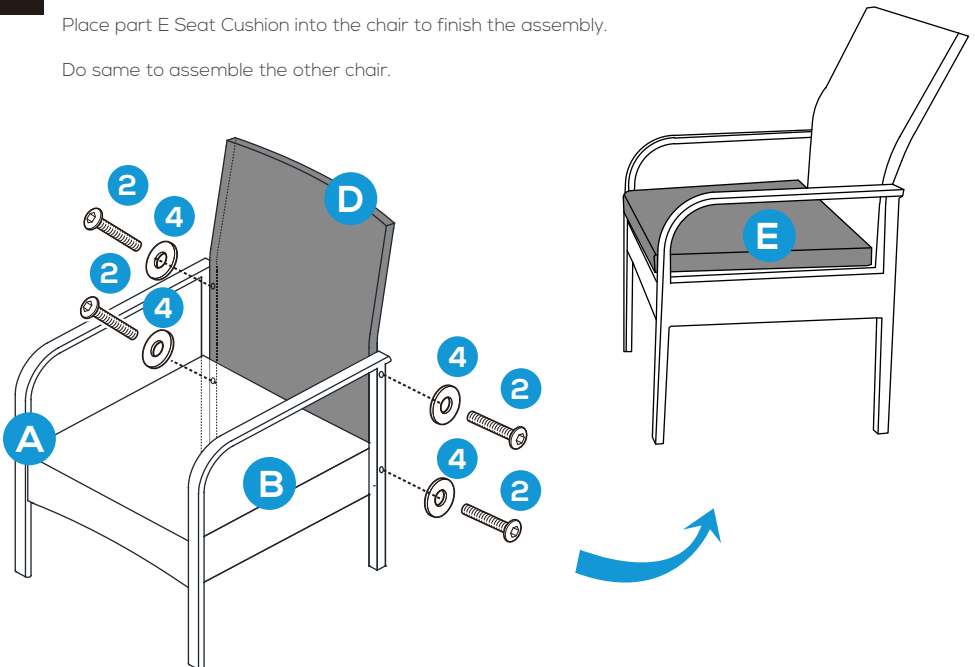


3

Attach part D Chair Backrest to part A Chair Right Side and part B Chair Left Side with 4 PCS of part 2 bolt and 4 PCS of part 4 washer.

Place part E Seat Cushion into the chair to finish the assembly.

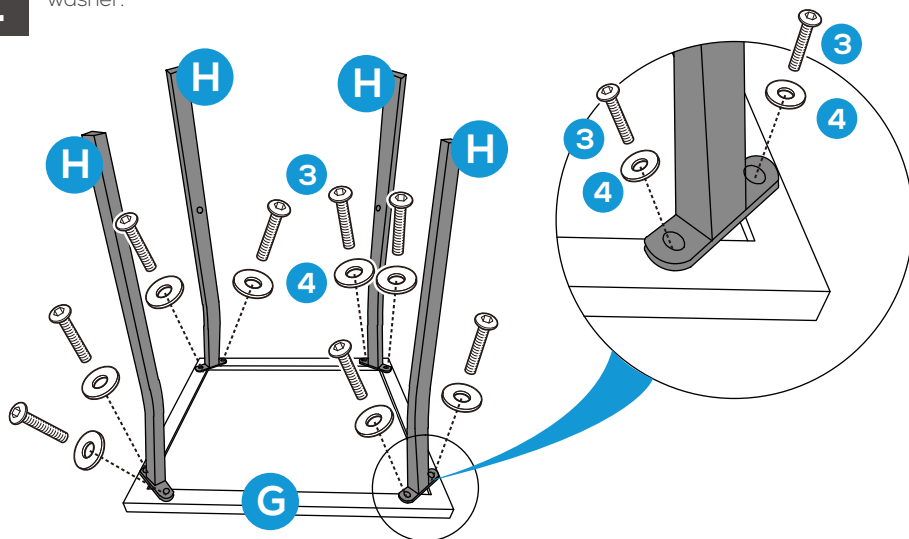
Do same to assemble the other chair.



## PRODUCT ASSEMBLY - TABLE

1

Attach the part H Table Leg to part G Table Top with 8 PCS of part 3 bolt and part 4 washer.



2

Attach part F Table Base to part H Table Leg with 4 PCS of part 1 bolt and part 4 washer.

