

# Best Practice Carpet Care Systems

Protection ■ Longevity ■ Appearance



Clean, Safe, Healthy Facilities - Lowest Total Cost



**HILLYARD**  
  
The Cleaning Resource®



# Successful Carpet Care

## It's About People, Process & Product

**PEOPLE**  
Available FTE's  
Level of Expertise

**PROCESS**  
Procedures  
Frequency

**PRODUCT**  
Product Formulation  
Mechanization



### Building a Custom-Tailored Carpet Care Program

Ask your Hillyard Account Manager to perform a best practice carpet care and matting evaluation to assist you in building the right floor care program for your facility.



## Trapping Soil, The First Line of Defense

Place 12 to 15 Feet of **CLEAN-IN-PLACE** Matting at the Entryways

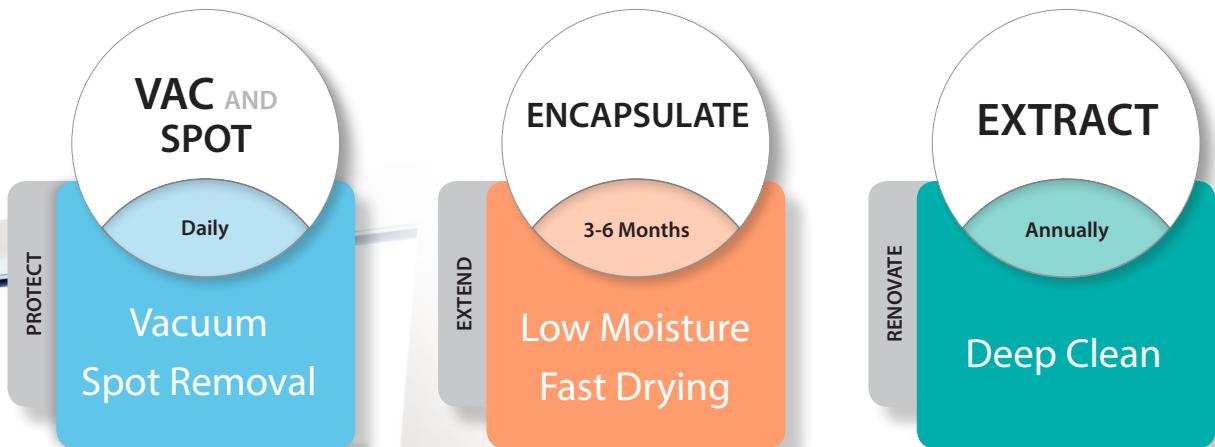
Trap **85% of the SOIL**  
**BEFORE** it enters your facility!



Scan Code  
More Info & Video!

## 3 Level Preventative Carpet Care

**MINIMIZE** Extraction Processes,  
**IMPROVE** Appearance, **EXTEND** Carpet Life Cycle



### Green Seal™ Certified Carpet Care

#### Hillyard Carpet Pre-Spray

Green Seal is an independent, non-profit organization that strives to achieve a healthier and cleaner environment.

Green Seal provides credible, objective, and unbiased information whose only purpose is to direct the purchaser to environmentally responsible products and services. Go to [greenseal.org](http://greenseal.org) for more information.



### Carpet & Rug Institute Approved

#### Hillyard Double Down AND Carpet Pre-Spray

The CRI Seal of Approval program tests the cleaning effectiveness of spot removers, pre-spray and in-tank carpet cleaning chemicals. To earn the Seal of Approval, solutions are tested on overall cleaning effectiveness and the following criteria:

**Rate of resoiling** - This ensures that the product does not attract dirt to the cleaned areas faster than the rest of the carpet.

**pH Level** - A more neutral pH ensures that carpet dyes and fibers are not adversely affected.

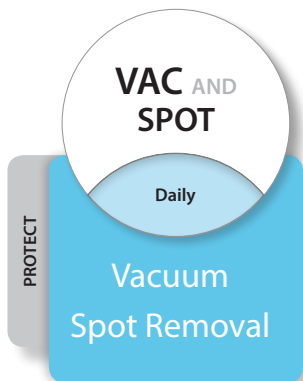
**Surface texture change** - The product must leave the carpet pile minimally changed after repeated cleanings.

**Optical brighteners** - None are allowed, as they can leave some patches of carpet lighter than the rest.

**Color-fastness** - Products must not be so aggressive that they cause a color change in the carpet.







## Vacuum Daily

An essential element of preventive maintenance of carpeting is daily vacuuming of medium to high traffic areas and scheduled vacuuming of low traffic areas. Daily vacuuming protects the fiber from soil and extends the life of the carpeting

## Spot Daily

To prevent spots from setting into stains, new carpet spots should be addressed daily. Before proceeding with any new spotting product or using an existing product on a new carpet always check for colorfastness before applying the cleaning solution to the carpet.

The Hillyard Trident MS2 is a great choice as a mini spot extractor.



## Use Double Down<sup>®</sup> for Effective Spot Removal Peroxide and Encapsulation Technology

1

### The Power Of Hydrogen Peroxide

Peroxide excels at brightening and deodorizing carpets. And, it chemically reacts with soils to break them down without leaving a residue like traditional carpet surfactants.

2

### The Breakthrough Technology Of Polymer Encapsulation

The polymer technology in Double Down encapsulates the remaining soil residue. After the polymer quickly dries to a non-tacky, crystal powder, vacuuming completely removes it from the carpet!

### See The Results

The carpet on the left was saturated with grape juice and left to dry over 90 days. On the right Hillyard Double Down was applied. The result speaks for itself.





# Hillyard Carpet Solutions Now Formulated with Next Generation ENCAPSULATION TECHNOLOGY

ENCAPSULATE

3-6 Months

Low Moisture  
Fast Drying

- Reduces Re-soiling
- Extends Cleaning Frequency
- Extends Carpet Life
- Delivers Cleaner Carpets



## Hillyard Crystalline Encapsulation

- 1 Specially formulated Hillyard Carpet Solutions products use high-quality surfactants that excel at separating soil and pre-existing carpet cleaner residue from carpet fibers.
- 2 Then the soil and residue is encapsulated within a proprietary Hillyard crystalline polymer formulation.
- 3 The encapsulated soil and residue crystallizes and dries, making it easy to remove with routine vacuuming.
- 4 The result is cleaner carpet with less re-soiling. Less re-soiling can extend the time between cleaning procedures, improving quality and lowering the cost to clean.

## The Choice is Crystal Clear

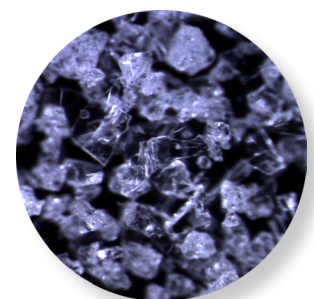
Not all carpet cleaners are formulated the same, and not all encapsulated carpet cleaners are formulated the same!

When selecting an encapsulated carpet cleaner, make sure it dries to a clear crystal. The crystal is what encapsulates the soil and residues. Well-formed crystals break away and release from the carpet fibers when vacuumed. Without superior crystallization, soils and residues cannot be vacuumed out of the carpet.



Traditional Detergent Formula

A single dimensional, detergent-based formula dried in a petrie dish and magnified 51 times under a microscope. Dries as a sticky brown residue.



Hillyard Crystalline Encapsulation

Deep Action®, reformulated as a multi-dimensional surfactant, acrylic polymer blend, magnified 51 times under a microscope. Dries as clear crystals.



ENCAPSULATE

3-6 Months

EXTEND

Low Moisture  
Fast Drying

# Use Deep Action® for Low Moisture, Interim Carpet Cleaning Processes

## 1 Bonnet Cleaning Program

1. Pre-Spray with Deep Action
2. Soak Bonnet in Water and Wring Out
3. Run Floor Machine with Bonnet Attached
4. Allow Carpet to Dry to Touch
5. Vacuum



## 2 Cylindrical Brush Systems

1. Pre-Spray with Deep Action
2. Agitate Carpet with Trident ICS17
3. Allow Carpet to Dry to Touch
4. Vacuum

*Cylindrical brush systems use two counter-rotating brushes to effectively clean and agitate both sides of the carpet nap. The brushes also lift and groom the carpet pile, while the debris bin catches soil and debris.*



### Advantages

- Fast drying, less downtime
- Lower water consumption
- Lower possibility of stains “wicking” back up
- Simple process to execute
- Bridges the gap between restorative cleaning processes, making restorative cleaning easier
- Enhanced appearance

### Limitations

- Provides excellent results for the time invested but does not clean as deep as hot water extraction

## Get Your Carpets Cleaner With New Deep Action

This entire sample test carpet was soiled with ASTM soil, and cleaned with a traditional, residue-containing carpet cleaning product.

Then, the right side was sprayed with new Deep Action. Both sides were brushed and vacuumed.

The results show new Deep Action helps restore carpets by removing soils and the residue left behind from traditional cleaning products.



Traditional  
Carpet Cleaner

Hillyard  
Deep Action





RENOVATE

**EXTRACT**

Annually

Deep Clean

# Restorative Extraction Processes

## Pre-Spray or "In-The-Tank"

Hillyard Has It Covered

### 1 Pre-Spray Method

More Dwell Time, Better Results

1. Pre-treat with Carpet Pre-Spray
2. Extract with Extraction pH Rinse or Carpet pH Rinse

### 2 "In-The-Tank" Method

Faster Process, Good Results

- Extract with HD Extraction

*When the "In-The-Tank" method is used, extraction chemical is applied to the carpet and then it is immediately extracted out without any dwell time. The results are good. However, the pre-spray method will yield even better results.*

#### Advantages

- Deep cleans down to the base of the carpet.

#### Limitations

- Uses more water.
- Longer dry times, areas may be out of service longer.
- Process requires a higher level of training.



## Improve Pre-Spray Productivity with The Hillyard Cleaning Companion®

The Hillyard Cleaning Companion is a completely self-contained, battery-operated cleaning system. It's great for carpet pre-spraying, and has a wide array of other uses including restroom cleaning.

The Cleaning Companion automatically mixes Carpet Pre-Spray with its onboard water supply as you quickly apply the formula with a hand-held wand operating with moderate pressure. Ask your Hillyard Sales Consultant for a demonstration.





## Low Moisture, Interim Carpet Cleaning

Name	Dilution	Scent	Encapsulation	CRI	Green Seal	Arsenal® One System		Bulk Containers	
						2.5 Liter	1-Gallon	5-Gallon	
Deep Action®+*	12 Oz	Floral	Yes	No	No	n/a	HIL0091806	HIL0091807	
Bonnet Cleaner #13+	6 Oz	Floral	No	No	No	HIL0081325	n/a	n/a	

\*Deep Action also available in 55 gallon drums, HIL0091809.

+ Safe for use on Advanced 5th Generation Stain Resistant Carpets •WoolSafe Approved

\*Case: 4 - 2.5 Liter 4 - 1 Gallon 1 - BIB

## Restorative, Extraction Carpet Cleaning

Name	Extraction	Dilution	Scent	Encapsulation	CRI	Green Seal	Arsenal® One System		Bulk Containers	
							2.5 Liter	1-Gallon	5-Gallon	55-Gallon
HD Extraction	In-The -Tank	2 to 6 Oz	Mild	Yes	No	No	n/a	HIL0091406	n/a	HIL0091409
Clean Action® II+	In-The-Tank	1 Oz	Floral	No	No	No	HIL0080725	HIL0090206	HIL0090207	HIL0090209
Carpet Pre-Spray*	Pre-Spray - 1	6 Oz	Mild	No	Yes	Yes	HIL0081425	HIL0096506	n/a	HIL0096509
Extraction pH Rinse	Pre-Spray - 2	2 Oz	Mild	Yes	No	No	n/a	HIL0093006	n/a	n/a
Carpet pH Rinse	Pre-Spray - 2	2 Oz	Mild	Yes	No	No	HIL0083525	HIL0083594	n/a	n/a

\* Carpet Pre-Spray available in Hillyard Cleaning Companion® Series, HIL0070022, 6 - 1/2 Gallons/Case

+ Safe for use on Advanced 5th Generation Stain Resistant Carpets •WoolSafe Approved

Case: 4 - 2.5 Liter 4 - 1 Gallon 1 - BIB 1 - 55 Gal

## Double Down, Dual-Action Carpet Spotting, Formulated with Peroxide and Encapsulation Technology, CRI Approved

Name	Description	Scent	Encapsulation	Pack	Item No.
Squeeze Bottle	Dual chamber, squeeze bottle. Each bottle is ready to use, no trigger sprayer required.	Mild	Yes	6 - 32 oz Bottles	HIL0093285
Trigger Sprayer Starter Kit	Dual chamber, trigger sprayer bottle. Kit comes with 1 trigger and 6 dual chamber refills.			6 - 22 oz. Bottles 1 Trigger Head	HIL0104069
Refills	Dual chamber, trigger sprayer bottle refills to be used with Double Down trigger head.			8 - 22 oz. Bottles	HIL0104070
Trigger	Special dual chamber bottle trigger head to be used with Double Down refills only.	n/a	n/a	1 - Trigger Head	HIL26016

Double Down is CRI approved.

## Traditional Carpet Spotters

Name	Description	Dilution	Scent	Arsenal® One System		Bulk Containers	Kit
				2.5 Liter	1-Quart		
Carpet Spotter+	Ready to use in bulk containers, Diluted at 6 Oz. per gallon of water in Arsenal System.	See Desc.	Mild	HIL0081525		HIL0091004	n/a
Carpet Spotter Gel+	Highly concentrated gel clings to carpet fiber to quickly dissolve oil and water-based soils.	RTU	Mild	n/a	n/a	HIL0090904	n/a
Rust Spotter Gel+	Highly concentrated gel clings to carpet fiber to dissolve and loosen rust spots.	RTU	Lime	n/a	n/a	HIL0091104	n/a
Carpet Debrowner II	Removes coffee, tea, urine and yellow oxidized stains from light colored carpet.	RTU	Mild	n/a	n/a	HIL0090704	n/a
Liquid Gum-Go®	Formulated for the safe and effective removal of gum.	RTU	Citrus	n/a	n/a	HIL0091204	n/a
Carpet Spotting Kit	Contains 1 quart of each of our traditional spotters and Take Down®, maid caddy, 3 trigger sprayers, a tamping brush, bone scrapper, toweling, and spotting chart.	RTU	n/a	n/a	n/a	n/a	HIL0090069

+ Safe for use on Advanced 5th Generation Stain Resistant Carpets •WoolSafe Approved

Case: 4 - 2.5 Liter 12 - Quarts 1 - Kit

## Specialty Products

Name	Description	Dilution	Scent	1-Quart	1 - Gallon	Powder
Soft Surface Sanitizer	Cleaner, sanitizer, and deodorizer for synthetic carpet. EPA reg.	2 to 16 Oz	Lemon	n/a	HIL0091906	n/a
Clean Release®+	Concentrated shampoo for dry foam carpet cleaning machines.	2 to 8 Oz	Pine	n/a	HIL0090506	n/a
Carpet Anti-Stat*	Stops annoying static shock in carpets and eliminates the buildup of static electricity, 1gal/400 sq. ft.	RTU	Citrus	n/a	HIL0091606	n/a
Soil-Stop®+	Concentrated soil and stain retardant protects carpet from dry, water-based, and oil-based stains.	1 to 6 Oz	Mild	n/a	HIL0092706	n/a
Carpet Booster®	Fast working, non-chlorine, oxygen-based, granular cleaner that brightens colors, removes yellowing.	1 to 4 Oz	Clean	n/a	n/a	HIL0091500
Defoamer II*	Concentrated, stable emulsion reduces foam in tanks.	1/2 to 6 Oz	Mild	HIL0018304	HIL0018306	n/a
Take Down®	Natural odor destroyer attacks organic matter (urine).	1 to 12 Oz	Cherry	HIL0046604	HIL0046606	n/a
			Green Apple	HIL0046704	HIL0046706	n/a
			Fresh	HIL0046804	HIL0046806	n/a

\* Carpet Anti Stat also available in 55-gallon drum HIL0091609, Defoamer II also available in 55-gallon drum HIL0018309

+ Safe for use on Advanced 5th Generation Stain Resistant Carpets •WoolSafe Approved

Case: 12 - 1 Quart 4 - 1 Gallon 6 - 2 lb.

Subject to change without notice.

© 2020, Hillyard, Inc.



PO Box 909  
St. Joseph, MO 64502  
www.hillyard.com  
LIT-Carpet-0120