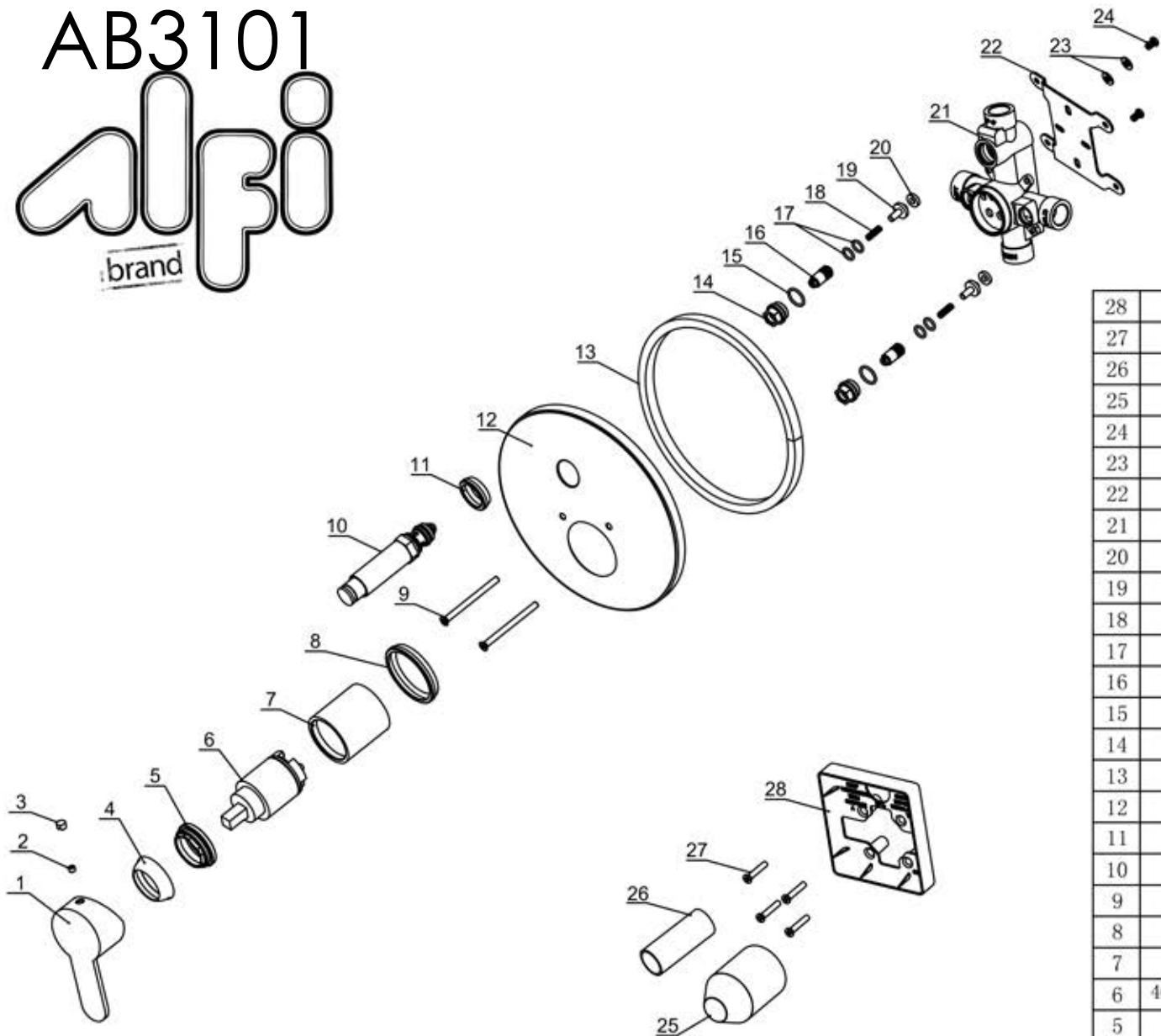


AB3101

brand



| | | | | |
|-----|--|-----------------|-----|-------------|
| 28 | 100200561 installation template | ABS | 1 | 50020062830 |
| 27 | M5*30 screw | Stainless steel | 4 | 50060008300 |
| 26 | 2647 plastic guard | PE | 1 | 70030033629 |
| 25 | 2203 plastic guard | PE | 1 | 70030023529 |
| 24 | M5*8 screw | Stainless steel | 2 | 50060009500 |
| 23 | ø12*ø6*1.2 tightening ring | H59 | 2 | 70020009000 |
| 22 | 100200560 fixing seat | Q235 | 1 | 50020062601 |
| 21 | 100200789 mainbody | ZCuZn40Pb2 | 1 | 10020094352 |
| 20 | 72188 washer | NBR | 2 | 70020018830 |
| 19 | 2075 connector | H59 | 2 | 40060016252 |
| 18 | 12734 spring (0.4) | Stainless steel | 2 | 50060030200 |
| 17 | 8*1.8"O"ring | NBR | 4 | 70010000530 |
| 16 | 2075 cartridge | H59 | 2 | 40060016052 |
| 15 | 13.2*1.8"O"ring | NBR | 2 | 70010004830 |
| 14 | 100200560 connector | H59 | 2 | 40060101152 |
| 13 | Sponge seal (8*10) | Sponge | 1 | 70030038931 |
| 12 | 100200561 plate | SUS304 | 1 | 50010084401 |
| 11 | 2383 rubber ring | Rubber | 1 | 70030026730 |
| 10 | 100200561 diverter | Assembly | 1 | 20070016701 |
| 9 | M5*80 screw | Stainless steel | 2 | 50060028400 |
| 8 | 1233 rubber ring | Rubber | 1 | 70030003730 |
| 7 | 2563 cover | H59 | 1 | 40060076901 |
| 6 | 40H back to back pressure balanced valve | Assembly | 1 | 20060005900 |
| 5 | 2383 cartridge nut | H59 | 1 | 40060073552 |
| 4 | 2325 decorative cover | ABS | 1 | 50010078101 |
| 3 | 2508 chrome button | ABS | 1 | 50010031101 |
| 2 | M5*4 screw | Stainless steel | 1 | 50060012000 |
| 1 | 100200544 handle | Zinc alloy | 1 | 20010017201 |
| No. | Decription&Specification | Material | Qty | Item no. |