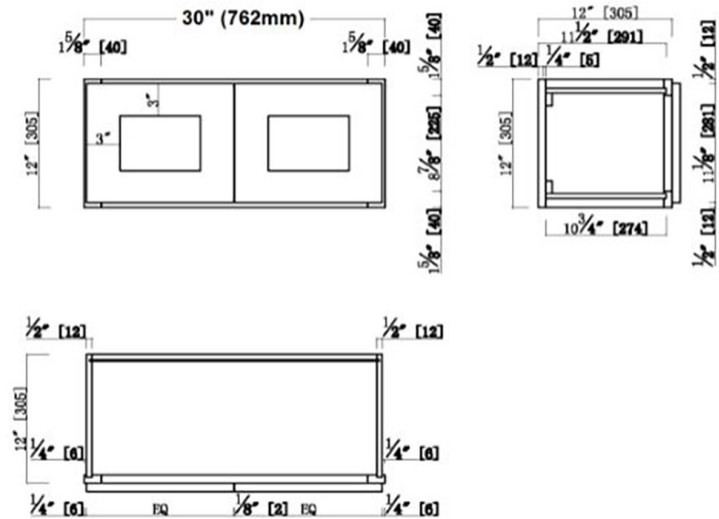


### Brookings Fully Assembled Shaker Wall Kitchen Cabinet 30x12x12

Espresso



W3012

## SPECIFICATIONS

|                               |                       |  |                 |
|-------------------------------|-----------------------|--|-----------------|
| <b>MATERIAL CONSTRUCTION:</b> | Wood                  | <b>NUMBER OF SHELVES:</b>              | 0               |
| <b>WOOD SPECIES:</b>          | Maple                 | <b>SHELF STYLE:</b>                    | N/A             |
| <b>ASSEMBLED DIMENSIONS:</b>  | 12" H x 30" L x 12" D | <b>ADJUSTIBLE SHELVES:</b>             | N/A             |
| <b>ASSEMBLED WEIGHT:</b>      | 18 lbs.               | <b>SHELF ADJUSTIBILITY INCREMENTS:</b> | N/A             |
| <b>KITCHEN CABINET TYPE:</b>  | Wall                  | <b>SHELF DIMENSIONS:</b>               | N/A" W x N/A" D |
| <b>MOUNTING TYPE:</b>         | Wall Mount            | <b>SHELF THICKNESS:</b>                | N/A             |
| <b>CONSTRUCTION TYPE:</b>     | Face Frame            | <b>SHELF MATERIAL:</b>                 | N/A             |
| <b>HINGE STYLE:</b>           | Soft Close            | <b>FACE FRAME MATERIAL:</b>            | Solid Maple     |
| <b>DOOR STYLE:</b>            | 2 Wood shaker doors   | <b>SIDES MATERIAL:</b>                 | Plywood         |
| <b>NUMBER OF DRAWERS:</b>     | 0                     | <b>BOTTOM MATERIAL:</b>                | Plywood         |
| <b>DRAWER DIMENSIONS 1:</b>   | N/A                   | <b>BACK PANEL MATERIAL:</b>            | Plywood         |
| <b>DRAWER DIMENSIONS 2:</b>   | N/A                   | <b>BACK BRACE MATERIAL:</b>            | Wood            |
| <b>DRAWER DIMENSIONS 3:</b>   | N/A                   | <b>TOE KICK INSET WIDTH:</b>           | N/A             |
| <b>DWR BOX MATERIAL:</b>      | N/A                   |  |                 |
| <b>DWR CONSTRUCTION:</b>      | N/A                   |  |                 |
| <b>DWR GLIDE:</b>             |                       |  |                 |
| <b>FAKE DWR QTY:</b>          | 0                     |  |                 |
| <b>FAKE DWR LOCATION:</b>     | N/A                   |  |                 |

|                                      |                         |
|--------------------------------------|-------------------------|
| <b>WARRANTY:</b>                     | 1-Year limited warranty |
| <b>LEGAL FOR SALE IN CALIFORNIA:</b> | Yes                     |
| <b>CARB COMPLIANT:</b>               | CARB Phase 2            |
| <b>TSCA TITLE VI COMPLIANT:</b>      | Yes                     |



|                    |  |
|--------------------|--|
| <b>TYPE:</b>       |  |
| <b>JOB:</b>        |  |
| <b>ORDER CODE:</b> |  |
| <b>APPROVALS:</b>  |  |