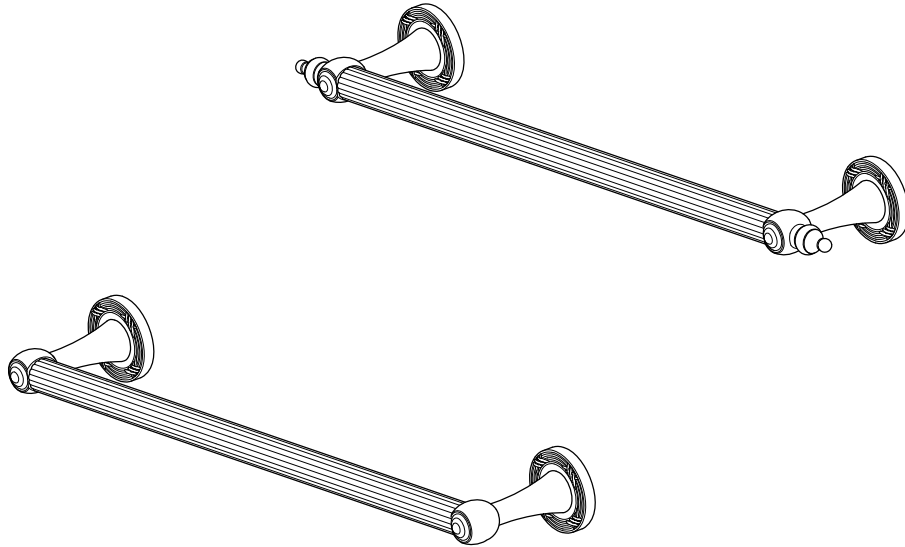
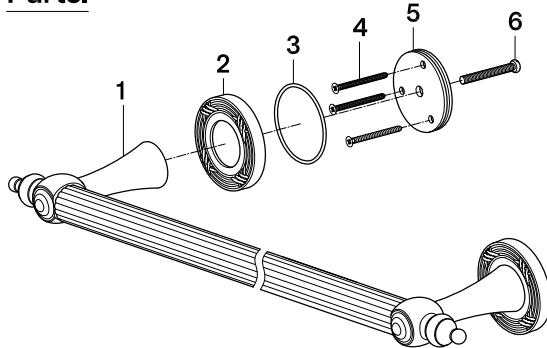




Decorative Grade Grab Bar Installation Instructions



Parts:



Parts Information:

- 1) Grab Bar: 1 Pc
- 2) Decorative Flange: 2 Pcs
- 3) Mounting Plate O-Ring: 2 Pcs
- 4) Mounting Screw: 6 Pcs
- 5) Mounting Plate: 2 Pcs
- 6) Bolt: 2 Pcs

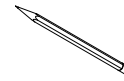
CAUTION

Failure to follow all installation directions may cause product to detach from the wall and cause serious injury

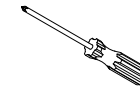
www.kingstonbrass.com

TOLL-FREE CUSTOMER SERVICE: 1-877-2-KBRASS
TECHNICAL SUPPORT E-mail: service@kingstonbrass.com
12775 Reservoir Street, Chino, CA 91710

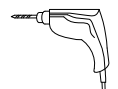
Tools Required



Marking Pencil



Phillips Screwdriver



Power Drill

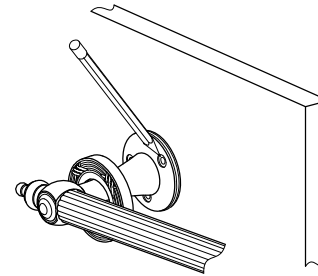


Fig. 1

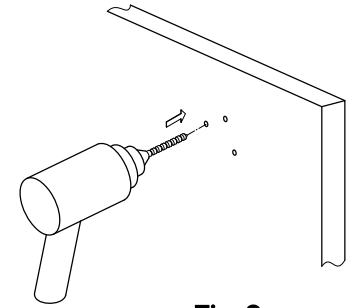


Fig. 2

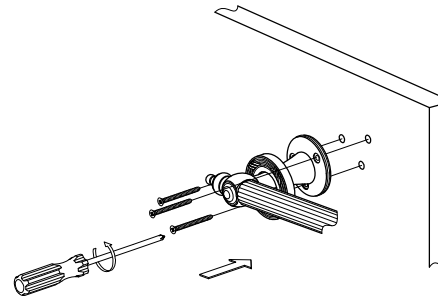


Fig. 3

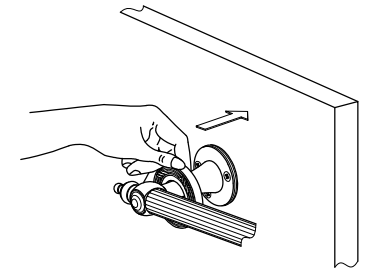


Fig. 4

Installation Steps:

1. Locate position on the wall and mark location of the holes.
2. Drill Starter holes (5/64").
3. Mount grab bar to the wall using 2" screws (Enclosed).

This grab bar is designed to be installed on wood bracing. If a proper wood bracing is not available, consult your contractor for the best anchors to use for your specific application. Available options include tile, masonry anchors, toggle bolts, plastic anchors, metal anchors and drywall anchors.

Cleaning

Clean with a damp cloth only.
Avoid using metal or abrasive polishes.

©2025 LVC Kingston LLC. All Rights Reserved.
2025-07-C