

JUNO SLIMFORM™ LED IC RATED LED NEW CONSTRUCTION JUNCTION BOX SURFACE MOUNT DOWNLIGHT

Project: _____

Fixture Type: _____

Location: _____

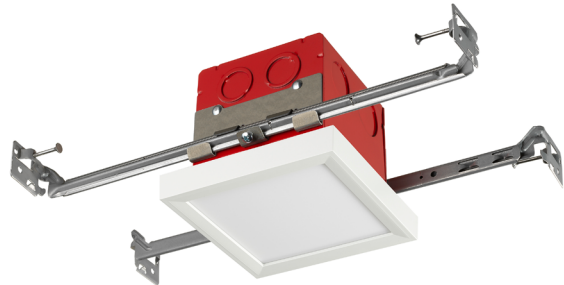
Contact/Phone: _____



FOR INSTALLATION INTO
FIRE RATED CEILING ASSEMBLIES
IC1JB JSFSQ

PRODUCT DESCRIPTION

IC LED Air-Loc® new construction junction box housing with energy efficient Juno SlimForm™ LED square surface mount trim for a complete downlight solution in multiple sizes 5" to 14" • May be installed in maximum 2 hour fire-rated ceiling assemblies per International Building Code Section 714 • Can be completely covered with insulation • Dimmable • Optional finish trims and shrouds available for custom, designer look similar to standard recessed downlights • Designed to provide 50,000 hours of life • 5 year limited warranty.



PRODUCT SPECIFICATIONS – TRIM

Surface Mount Trim Shallow, less than 1", solid square housing with white finish • Non conductive fixture for shower light applications • Optional, field installable finish trims available for 5" and 7" versions to change the exterior finish of fixture • Optional, field installable decorative baffle and cone shrouds for 5" and 7" versions provide the aesthetic and source shielding similar to the experience of a fully recessed downlight.

Optics Light guide technology combined with diffusing lens conceals the LEDs from direct view and provides uniform lens luminance.

LED Light Engine LEDs mounted directly to heatsink designed to provide superior thermal management and ensure long life • 2700K, 3000K, 3500K or 4000K LED color temperature • LEDs binned for 4-step MacAdam ellipse color consistency • 90 CRI minimum.

LED Driver Choice of dedicated 120 volt (120) driver or universal voltage (MVOLT) driver that accommodates input voltages from 120-277 volts AC at 50/60Hz • Power factor > 0.9 at 120V input • 120 volt driver is dimmable with the use of most incandescent, magnetic low voltage and electronic low voltage wall box dimmers • Universal voltage driver is dimmable with the use of most 0-10V wall box dimmers • External driver on 5" and 7" models only • For a list of compatible dimmers, see [JUNOSLIMFORM-DIM](#).

Electrical Connections Trim features quick connect plug installed as standard for installation into IC1JB with quick connect whip.

Life Rated for 50,000 hours at >70% lumen maintenance.

PRODUCT SPECIFICATIONS – HOUSING

Junction Box Housing Designed for use in IC (insulated ceiling) or non-IC construction • Rough-in section (junction box, bar hangers) fully assembled for ease of installation • Painted steel 3-1/2" deep 4" square junction box • Provided with (4) 1/2"-3/4" concentric, (2) 1/2", (4) 3/4" and (2) 1" knockouts • cETLus listed for through-branch wiring, maximum 8 No. 12 AWG 90°C branch circuit conductors (4 in and 4 out).

Hardware Ships with retrofit mounting bracket, trim ring and quick connect whip; not required for JSFSQ installation.

INSTALLATION

Installs directly to industry standard junction boxes. The IC1JB junction box housing must be installed per the International Building Code Section 714 guidelines to maintain up to a 2 hour ceiling fire rating. Precise ceiling cutout required. For use with 1/2" – 1-1/4" ceiling thickness.

Mounting option JSFMTGPLT 4X4 is required for installation.

Real Nail® 3 Bar Hangers Telescoping Real Nail 3 system permits quick placement of housing anywhere within 24" O.C. joists or suspended ceilings • Bars scored in two locations for fast, clean breaking, allowing housing installation in tight applications • Captive bugle-headed ring shank nail for quick one-step installation and easy removal with claw hammer for fixture relocation • Integral T-bar notch for suspended ceilings • Locking set screw to lock junction box housing in position • Design covered under US Patent D552,969.

LISTINGS

Labels ENERGY STAR® certified • Certified to the high efficacy requirements of California T24 JA8-2016 • Assembly ETL listed to UL1598 for US and Canadian through branch wiring, damp location • Suitable for wet locations (covered ceilings) • ETL listed to UL514A.

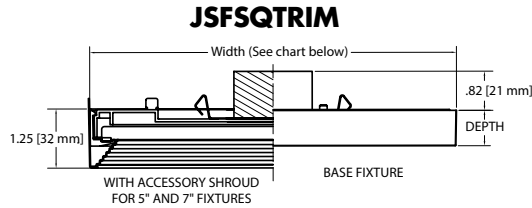
Testing All reports are based on published industry procedures; actual performance may differ as a result of the end-user environment and applications. All values are design or typical values, measured under laboratory conditions at 25 °C.

Warranty 5-year limited warranty. This is the only warranty provided and no other statements in this specification sheet create any warranty of any kind. All other express and implied warranties are disclaimed. Complete warranty terms located at: www.acuitybrands.com/support/warranty/terms-and-conditions

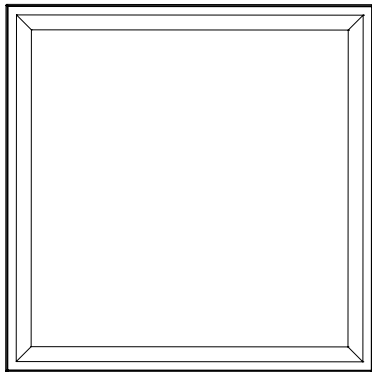
Note: Actual performance may differ as a result of end-user environment and application. All values are design or typical values, measured under laboratory conditions at 25 °C. Specifications subject to change without notice.

JUNO SLIMFORM™ LED IC RATED LED NEW CONSTRUCTION JUNCTION BOX SURFACE MOUNT DOWNLIGHT FOR INSTALLATION INTO FIRE RATED CEILING ASSEMBLIES IC1JB JSFSQ

DIMENSIONS



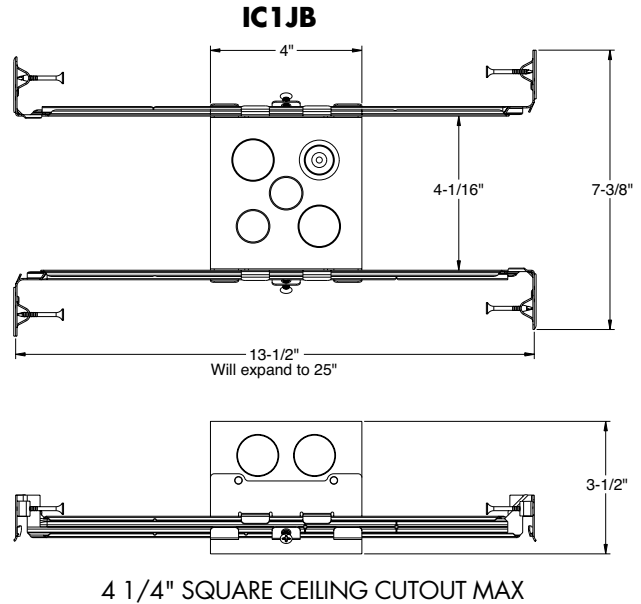
External driver available on 5" and 7" models only.



SQUARE SPECIFICATIONS

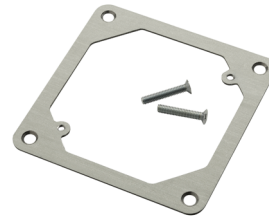
	Width	Depth
JSFSQ 5IN	5.25 (13.34)	0.75 (1.91)
JSFSQ 7IN	7.77 (19.74)	0.75 (1.91)
JSFSQ 12IN	12.07 (30.66)	0.9 (2.29)
JSFSQ 14IN	14.18 (36.02)	0.9 (2.29)

All dimensions are in inches (centimeters) unless otherwise indicated.



4 1/4" SQUARE CEILING CUTOUT MAX

JSFMTGPLT 4X4 (Required for JSF installation)



JSFSQ PERFORMANCE DATA

	JSFSQ 5IN		JSFSQ 7IN		JSFSQ 12IN		JSFSQ 14IN	
	120V	MVOLT	120V	MVOLT	120V	MVOLT	120V	MVOLT
Lumens	700	700	1000	1000	1300	1300	1800	1800
CRI	90CRI		90CRI		90CRI		90CRI	
CCT	27K, 30K, 35K, 40K		27K, 30K, 35K, 40K		27K, 30K, 35K, 40K		27K, 30K, 35K, 40K	
Voltage	120V	120V-277V	120V	120V-277V	120V	120V-277V	120V	120V-277V
Input Power	10W	10W	13W	13W	15W	15W	20W	20W
Input Current	110MA	50MA	150MA	60MA	180MA	80MA	240MA	110MA
Frequency	50/60Hz		50/60Hz		50/60Hz		50/60Hz	
Power Factor	>0.9		>0.9		>0.9		>0.9	

JUNO SLIMFORM™ LED IC RATED LED NEW CONSTRUCTION JUNCTION BOX SURFACE MOUNT DOWNLIGHT FOR INSTALLATION INTO FIRE RATED CEILING ASSEMBLIES IC1JB JSFSQ

ORDERING INFORMATION

Example: IC1JB JSFSQ 5IN 07LM 30K 90CRI 120 FRPC WH JSFMTGPLT

Junction box and trim can be ordered together or separate, but will always ship separately.

Series	Trim Series	Size/Lumens	Color Temperature	CRI
IC1JB New Construction Junction Box for Fire Rated Ceiling Assemblies	JSFSQ SlimForm Surface Mount Downlight - Square	5IN 07LM 5", 700 Lumens	27K 2700K	90CRI 90+ CRI
		7IN 10LM 7", 1000 Lumens	30K 3000K	
		12IN 13LM 12", 1300 Lumens	35K 3500K	
		14IN 18LM 14", 1800 Lumens	40K 4000K	

**Limited stock remaining. See table below for available ordering options.

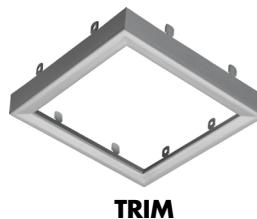
Voltage/Driver	Finish	Mounting Option
120 FRPC** Dedicated 120V, Forward Reverse Phase Dimming	WH White	JSFMTGPLT SlimForm mounting plate for installation to 4X4 junction box
MVOLT ZT** Universal Voltage 120V-277V, 0-10V Dimming		

JSFMTGPLT 4X4 required for use of IC1JB with JSFSQ.

TRIM – Optional, field installable finish trim rings available to change the exterior finish of fixture.

Example: JSFSQTRIM 5IN BL

Series	Size	Finish
JSFSQTRIM SlimForm Accessory Trim - Square	5IN 5 inches	BL Black
		SN Satin Nickel



**Remaining Ordering Options	
JSFSQ 120V Fixtures	
Option Value	Catalog Number
5IN	JSFSQ 5IN 07LM 30K 90CRI 120 FRPC WH M6
7IN	JSFSQ 7IN 10LM 30K 90CRI 120 FRPC WH M6
14IN	JSFSQ 14IN 18LM 27K 90CRI 120 FRPC WH M6
14IN	JSFSQ 14IN 18LM 30K 90CRI 120 FRPC WH M6
14IN	JSFSQ 14IN 18LM 40K 90CRI 120 FRPC WH M6

**Remaining Ordering Options	
JSFSQ MVOLT Fixtures	
Option Value	Catalog Number
5IN	JSFSQ 5IN 07LM 30K 90CRI MVOLT ZT WH M6
5IN	JSFSQ 5IN 07LM 40K 90CRI MVOLT ZT WH M6
7IN	JSFSQ 7IN 10LM 27K 90CRI MVOLT ZT WH M6
7IN	JSFSQ 7IN 10LM 30K 90CRI MVOLT ZT WH M6
7IN	JSFSQ 7IN 10LM 40K 90CRI MVOLT ZT WH M6
14IN	JSFSQ 14IN 18LM 30K 90CRI MVOLT ZT WH M6

JUNO SLIMFORM™ LED IC RATED LED NEW CONSTRUCTION JUNCTION BOX SURFACE MOUNT DOWNLIGHT FOR INSTALLATION INTO FIRE RATED CEILING ASSEMBLIES

IC1JB JSFSQ

PHOTOMETRICS

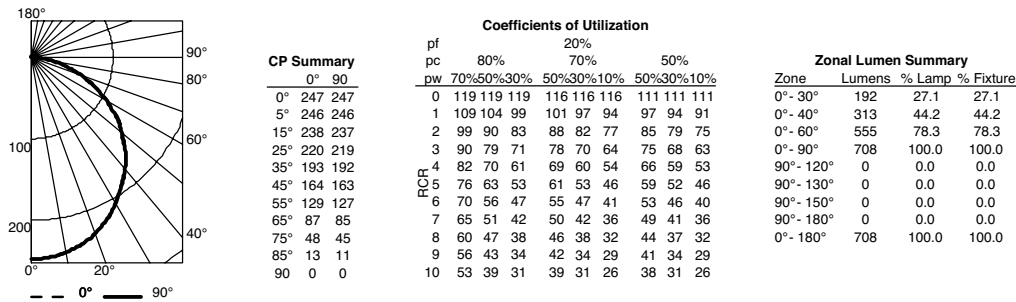
Distribution Curve

Distribution Data

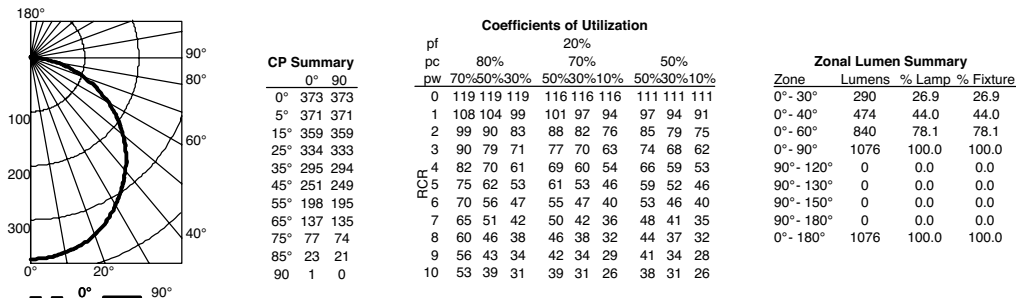
Coefficient of Utilization

**Illuminance Data at 30" Above Floor for
a Single Luminaire**

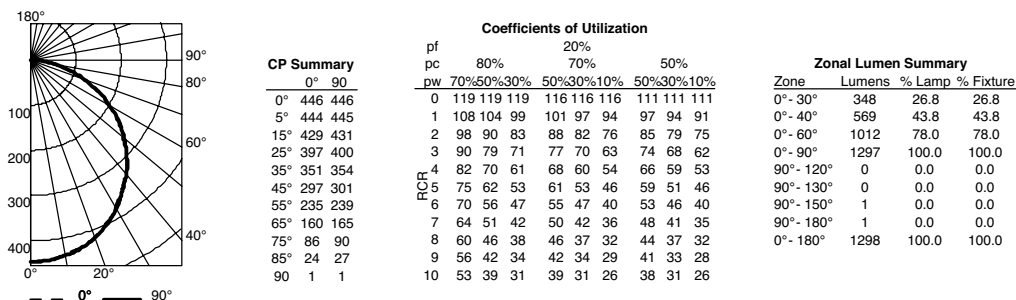
JSFSQ 5IN 27K, 2700K LEDs, input watts: 9.8, delivered lumens: 708, LM/W = 72.2, test no. ISF 33598, tested in accordance to IESNA LM-79.



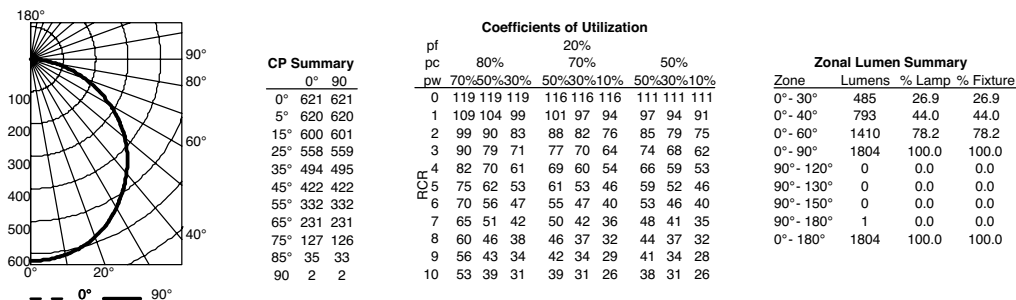
JSFSQ 7IN 27K, 2700K LEDs, input watts: 12.9, delivered lumens: 1076, LM/W = 83.4, test no. ISF 33601, tested in accordance to IESNA LM-79.



JSFSQ 12IN 27K, 2700K LEDs, input watts: 14.7, delivered lumens: 1298, LM/W = 88.3, test no. ISF 33664, tested in accordance to IESNA LM-79.



JSFSQ 14IN 27K, 2700K LEDs, input watts: 20.4, delivered lumens: 1804, LM/W = 88.4, test no. ISF 33662, tested in accordance to IESNA LM-79.



For 30K fixtures, use 1.02 multiplier; For 35K fixtures, use 1.03 multiplier; For 40K, use 1.07 multiplier.