

SPEAKMAN® SM-3040

Versatile™ Pressure Balance Shower Package

FEATURES:

- Includes Sentinel Mark II® concealed anti-scald balanced pressure valve and hand held spray combination.
- Chrome plated brass wall plate with metal index.
- Chrome plated brass lever handle.
- Independent center sleeve allows up to 1 in. of rough-in variation.
- Adjustable temperature limit stop. Brass body.
- Pressure balancing & ceramic temperature regulating cartridge with built-in check valves.
- Can be installed back-to-back. Roughing-in template.
- Four port valve with 1/2 in. female copper sweat inlets and shower outlet (tub outlet 1/2 NPT female).
- Furnished with 1/2 in. pipe plug.
- Chrome plated brass supply ell with wall flange.
- 69 in. square lock stainless steel hose with rubber liner.
- Swivel connector.
- In-line vacuum breaker.
- 30 in. chrome plated brass slide bar with mounting screws.
- VS-100-PC handshower with flow control device reduces flow to 2.5 gpm (9.46 L/min) maximum



FINISH:



PC

COMPLIANCE:

- ASSE 1016 & ASME 112.18.1/CSA B125.1 standards (SM-3000 valve)

OPTIONS: Add suffix to model

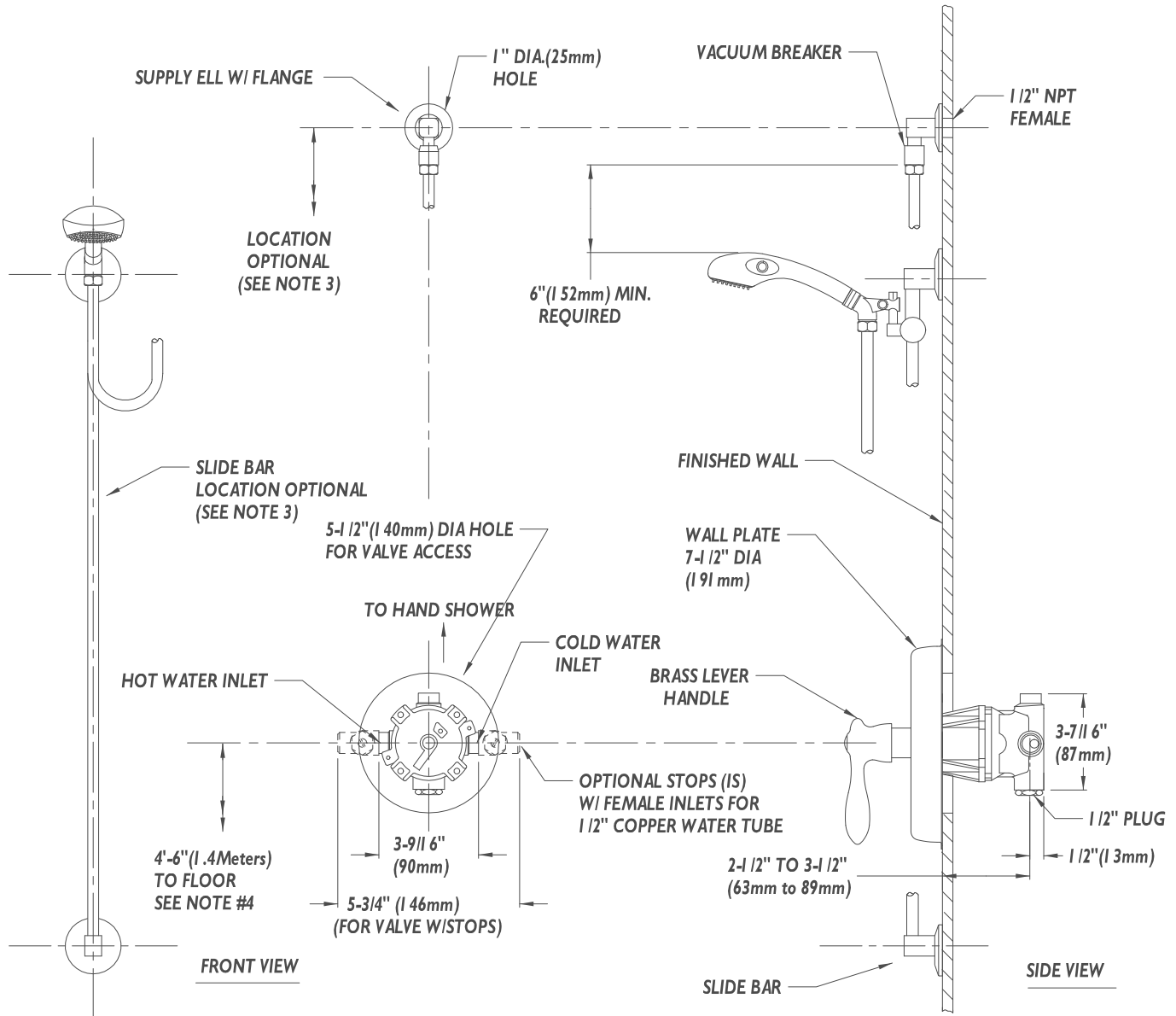
- Integral stops -IS
- 69 in. white vinyl hose -VH
- Contractor Packs Available

WARRANTY:

- 5 year limited

NOTE: 1. All dimensions are in inches (millimeters) unless otherwise specified and are subject to change without notice. 2. Unless otherwise specified all inlets and outlets are 1/2" female copper sweat. 3. The location of the slide bar and supply ell is optional, but restricted by the 69" hose length running from the supply ell connection to hand shower and the 6" minimum requirement between the in-line vacuum breaker & top of hand shower (hand shower adjusted to the highest position). 4. For ADA mounting locations consult ADAAG, ANSI A171, or state regulations.

DIMENSIONS:



SPEAKMAN® SM-3050

Versatile™ Pressure Balance Shower/Tub Package

FEATURES:

- Includes Sentinel Mark II® concealed anti-scald balanced pressure shower valve and handheld spray combination.
- Chrome plated brass wall plate with metal index.
- Chrome plated brass lever handle. Independent center sleeve allows up to 1 in. of rough-in variation.
- Adjustable temperature limit stop. Brass body.
- Pressure balancing & ceramic temperature regulating cartridge with built-in check valves.
- Can be installed back-to-back.
- Roughing-in template.
- Four port valve with 1/2 in. female copper sweat inlets and shower outlet (tub outlet 1/2 NPT female).
- S-1556 chrome plated tub spout diverter.
- In-line vacuum breaker.
- VS-100-PC handshower with flow control device reduces flow to 2.5 gpm (9.46 L/min) maximum.
- 69 in. square lock stainless steel hose with rubber liner.
- Chrome plated brass supply elbow with wall flange. 30 in. slide bar with mounting screws.
- Swivel connector.



FINISH:



PC

COMPLIANCE:

- ASSE 1016 & ASME 112.18.1/CSA B125.1 standards (SM-3000 valve)

OPTIONS: Add suffix to model

- Integral stops -IS
- 69 in. white vinyl hose -VH
- Contractor Packs Available

WARRANTY:

- 5 year limited

NOTE: 1. All dimensions are in inches (millimeters) unless otherwise specified and are subject to change without notice. 2. Unless otherwise specified all inlets and outlets are 1/2" female copper sweat. 3. The location of the slide bar and supply ell is optional, but restricted by the 69" hose length running from the supply ell connection to hand shower and the 6" minimum requirement between the in-line vacuum breaker & top of hand shower (hand shower adjusted to the highest position). 4. For ADA mounting locations consult ADAAG, ANSI A117.1, or state regulations.

DIMENSIONS:

