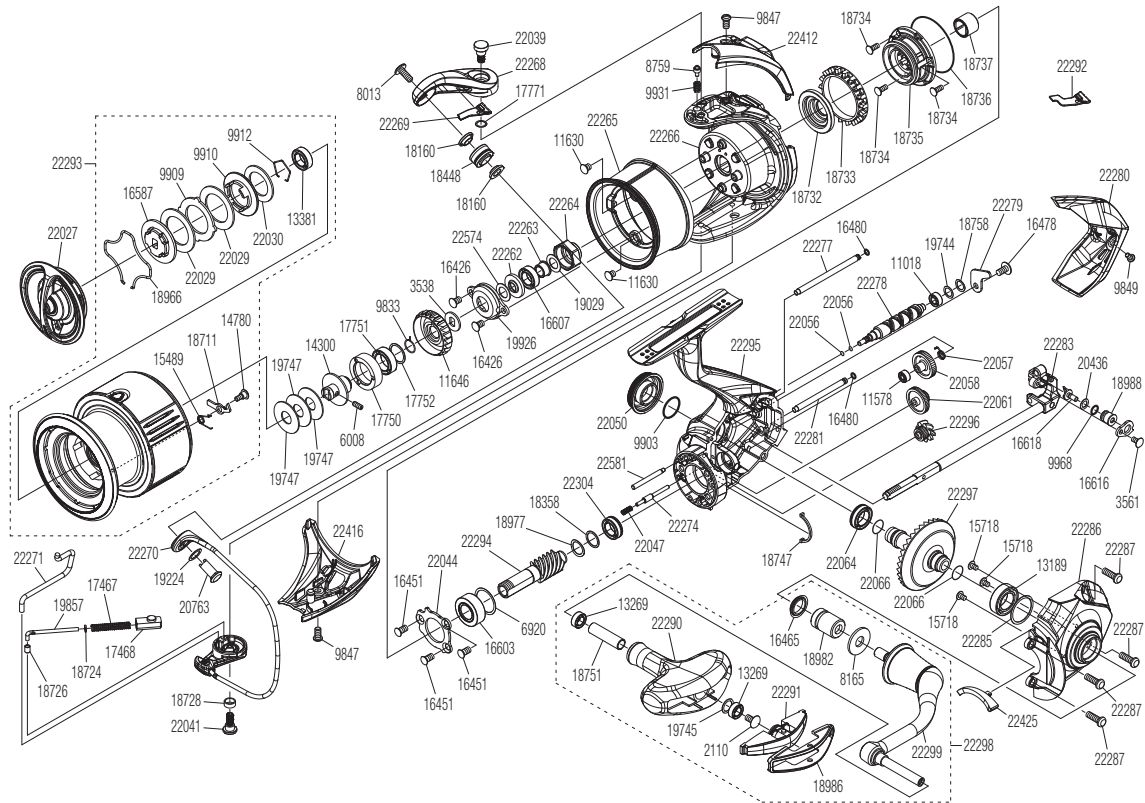


# SHIMANO

## STELLA

## STL-4000XG



Please note that the number of adjusting washers may not always be the same as shown in the exploded views.

(51SF51KH45X)

Please note that your actions take full responsibility when you take it apart.

#	Part No.	Description	#	Part No.	Description	#	Part No.	Description
2110	103E9	Screw	18358	10GD8	Spacer	22264	10SQ2	Rotor Nut
3538	103NX	Spool Support A	18448	101BJ	Line Roller Set	22265	1011W	Rotor Brim
3561	10MT4	Screw	18711	10TJX	Drag Click	22266	10DRQ	Rotor Assembly
6008	10PN2	Set Screw	18724	101D9	Spring Guide A Support Collar	22268	1011J	Bail Arm
6920	107JT	Washer	18726	10DKC	Bail Spring Guide A Bush	22269	10SQ4	Bail Arm Fin
8013	10K40	Screw	18728	101D0	Bushing	22270	10DSW	Bail Assembly
8165	10FJ6	Washer	18732	101D5	Rotor Ring	22271	10SED	Bail Trip Lever
8759	106UX	Click Pin	18733	10DK7	Friction Ring	22274	10SEC	Idle Gear Shaft
9833	107V2	Ratchet Spring	18734	101D7	Screw	22277	10SQ5	Oscillating Guide A
9847	10CYU	Screw	18735	10S2L	Roller Clutch Assembly	22278	10SQ6	Worm Shaft
9849	106ZG	Screw	18736	10DKD	Roller Clutch Case Seal	22279	10SDX	Worm Shaft Retainer
9903	108WA	O Ring	18737	10DJY	Roller Clutch Inner	22280	1011Z	Rear Protector
9909	10BCP	Eared Washer	18747	10DKA	Flange Water Proof	22281	10SPV	Oscillating Guide B
9910	10B9D	Key Washer A	18751	1022F	Handle Knob Shaft Pipe	22283	10DRR	Main Shaft Assembly
9912	10GEW	Bearing Retainer	18758	10TK0	Washer	22285	100W9	Washer
9931	10CGZ	Click Spring	18966	1006X	Retainer	22286	10DRV	Side Cover Assembly
9968	108W9	O Ring	18977	10053	Washer	22287	10SJV	Screw
11018	10PDA	Ball Bearing	18982	10070	Handle Shaft Cover B	22290	10SQ3	Handle Knob
11578	10PC0	Ball Bearing	18986	1005Q	Handle Knob ID Plate	22291	10SDW	Handle Knob Seal
11630	103C8	Screw	18988	1005H	Oscillating Slider Bushing	22293	10E1C	Spool Assembly
11646	107PS	Drag Click Ratchet	19029	101M1	Washer	22294	10SEH	Pinion Gear
13189	104PT	Ball Bearing	19224	1002S	Washer	22295	10E1B	Body Assembly
13269	104VX	Ball Bearing	19744	100XZ	Washer	22296	10SOA	Idle Gear (Large)
13381	104JT	Ball Bearing	19745	104FH	Washer	22297	10SQC	Drive Gear
14300	10LTS	Spool Bearing Bushing	19747	101AV	Spool Washer	22298	10E17	Handle Assembly
14780	10A6F	Screw	19857	10SAN	Bail Spring Guide A	22299	10E18	Handle Shank Assembly
15489	10BQE	Drag Click Spring	19926	1076N	Retainer	22304	10RG4	Bail Bearing
15718	1055G	Screw	20436	100CW	Washer	22412	1011M	Bail Spring Cover
16426	103LB	Screw	20763	10RKV	Line Roller Support	22416	1012D	Bail Hold Support
16451	10ML6	Screw	22027	10EEU	Drag Knob Assembly	22425	10QWW	Bail Trip Strike
16465	10PXU	Handle Shaft Seal	22029	10RSH	Drag Washer A	22574	13XFQ	Washer
16478	103EB	Screw	22030	10R4W	Drag Washer B	22581	13XY6	Idle Gear C Shaft
16480	10JAB	O Ring	22039	10R59	Screw			
16587	10QBY	Key Washer B	22041	10R4T	Screw			
16603	104VF	Ball Bearing	22044	10R53	Bearing Retainer			
16607	104JV	Ball Bearing	22047	10R5T	Idle Gear Spring			
16616	10HAH	Oscillating Pawl Cover	22050	10RSR	Handle Screw Cap			
16618	106VM	Oscillating Pawl	22056	10092	O Ring			
17467	10R2P	Bail Spring	22057	10RSN	Idle Gear Spring			
17468	10R2E	Bail Spring Guide B	22058	10R5L	Idle Gear			
17750	10TQH	Bearing Spacer	22061	10R4Q	Idle Gear C			
17751	10EX8	Ball Bearing	22064	10RSU	Ball Bearing			
17752	10GHN	Washer	22066	1009S	O Ring			
17771	10192	Washer	22262	10SPZ	Bearing Water Proof			
18160	1020L	Bearing Spacer	22263	10SQ1	Spacer	22292	10SE2	Bail Arm Fin (accessory)