

OPERATION  
SAFETY  
SERVICE  
WARRANTY  
CONTACT  
SPECIFICATIONS  
TROUBLESHOOTING

# PBX24

Instruction Manual

READ AND SAVE THESE INSTRUCTIONS



Intertek  
5002534



# THANK YOU FOR PURCHASING A B-AIR PRODUCT.

## Introduction

Your new B-Air Polar PBX24 air mover is engineered for maximum performance through innovative design, space efficiency and low amperage draw. The built-in adjustable feet allow the Polar Bear PBX24 to be used at a level horizontal angle or to be positioned at a downward 6 degree angle for more concentrated air-flow.

## B-Air Polar Bear PBX24 Axial Air Mover

- Delivers over 3300 CFM of directional air flow.
- Daisy Chain Capable, up to (4) four units with an on-board G.F.C.I. Outlet.
- 360 Degree Positioning with Optional Stand.
- Lightweight (30 lbs) & Stackable up to 5 units.
- 25ft Cord Wrap Assembly.
- Integrated Hour Meter.
- Ergonomic Handle for Easy Handling.
- Reset Breaker for over current protection.

CIRCUIT BREAKER

BALANCED CARRYING HANDLE

G.F.C.I. RECEPTACLE

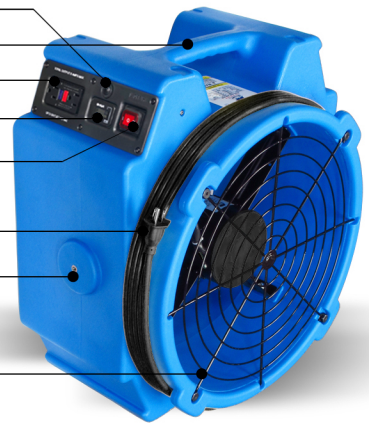
HOUR METER

2 SPEED POWER SWITCH WITH INDICATION LAMP

POWER CORD

BUILT-IN MOUNTING LUG NUT FOR OPTIONAL STAND

GRILL



## Power Requirements

### Daisy Chaining

The Polar Bear PBX24 Air Mover draws 2.6 amps. The 12 amp on-board circuit breaker will allow four (4) B-Air Polar Bear PBX24 Air Movers on one (1) circuit.

### Cords

Use 3 pronged adaptors that are UL approved and no less than 14-3 with Ground Fault Circuit Interrupter (G.F.C.I.).

Do not use cords that show any kind of wear or damage.

Cords are not covered by warranty.

# Service

In order to receive service or replacement parts under warranty, you must:

- A. Call for an RMA (Return Merchandise Authorization Number)
- B. Have proof of purchase
- C. Ship to B-Air

Upon inspection, we will advise you of the repairs needed and the cost (if applicable). B-Air will issue repair or replacement parts depending on warranty. Contact 877-800-BAIR (2247) for more information.

# Limited Warranty

Warranty covers against defects in material and craftsmanship used under normal intended use to original purchaser for a term of (2) two years from the original date of purchase including parts, labor and 1 way shipping. Housing is covered for a term of (5) five years from the date of the original purchase.

## Important!

Warranty does not cover signs of misuse including, but not limited to rough handling, abuse, tampering, improper voltage use and unauthorized maintenance and repairs.

# Troubleshooting

PROBLEM	POSSIBLE CAUSE	SOLUTION
Motor Not Running	a) Switch is OFF b) Bad Outlet c) Faulty Switch/Cord d) Overcurrent Event	a) Turn Switch ON b) Check Outlet/ Change to Another Outlet c) Call Factory for new Switch/Replace Cord d) Unplug and Reset Circuit Breaker
Scraping Noise From blade	a) Fan blade loose	a) Call Factory for Replacement Advise

# Specifications

VOLTS	115 V	* 230 V
CYCLE	60 Hz	50 Hz
MAX AIR VOLUME	3300 CFM	2950 CFM
AMPS	2.6 A	0.9 A
WEIGHT NET/SHIP	30 / 34 LBS	30 / 34 LBS
UNIT SIZE (L x W x H)	22.5"x 20"x 13"	22.5"x 20"x 13"
FAN SPEED (RPM)	L 1650 / H 1750	L 1350 / H 1450
MOTOR	1/4 HP	1/4 HP
ATTACHED CORD	25 FT / 14AWG	25 FT / 1.5MM <sup>2</sup>
SPEEDS	2	2

\* 230V ONLY AVAILABLE IN NON-ETL.

# GFCI Protection and the On-Board Duplex Outlet

The standard AC voltage outlet GFCI (Ground Fault Circuit Interrupter) promotes operator safety in wet applications. GFCI devices trip when a fault to electrical ground is sensed. It is recommended to check the GFCI protection prior to operation. To check, push the "TEST" button located on the GFCI duplex outlet will pop out. If operating properly the "RESET" button on the GFCI outlet will pop out. Depending on your Air Movers specific equipment, a tripped GFCI may be indicated by a small LED. The device can only be "RESET" when the Centrifugal Air Mover is connected to a wall outlet providing standard voltage. This duplex AC outlet allows the inter-connection of other AC powered devices. The sum total amperage of all devices (excluding the first fan) plugged into the receptacle must not exceed 9A.



# WARNING



## IMPORTANT SAFETY INSTRUCTIONS

When using electrical appliances, these instructions and warnings should always be followed to reduce the risk of fire, electrical shock and injury to persons:



Read all instructions before using this Fan.



### WARNING

**TO REDUCE THE RISK OF FIRE, ELECTRICAL SHOCK OR PERSONAL INJURY, ALWAYS FOLLOW THESE IMPORTANT SAFETY INSTRUCTIONS AND WARNINGS:**



**DO NOT** use this Fan to ventilate areas where flammable liquids or vapors are used, stored or are present, including paints, gasoline, varnishes, floor refinishing products or solvents. **ALWAYS** read and follow all warnings and instructions on the containers for these products!



**ALWAYS** be sure the plug fits tightly into the outlet. When plugs fit loosely into outlets, they may slip partially out of the outlet and create a poor connection. This may cause outlets to overheat and create a potential fire hazard. Outlets in this condition should be replaced by a qualified electrician.



**ALWAYS** unplug the power cord when servicing, cleaning or moving the Fan. **DO NOT** use the ON/OFF switch as the sole means of disconnecting power. **NEVER** leave children unattended when the Fan is on or plugged in. **ALWAYS** turn off and unplug the Fan when not in use.



Use **ONLY** GFCI protected receptacles if utilizing as an installation type Fan.

**BE CERTAIN** that the power source for the Fan is 120V AC. **DO NOT** plug the Fan into 240V or other power source.

The power cord is equipped with a three-prong grounded plug that must be inserted into a matching receptacle. Under no circumstances should the grounding prong be cut off the plug. Where a two-prong wall receptacle is encountered, it must be replaced with a properly grounded three-prong receptacle installed in accordance with the National Electrical Code (NEC) and all applicable local codes and ordinances. This work must be done only by a qualified electrician, using copper wire only.



**DO NOT USE A THREE-PRONG TO TWO-PRONG ADAPTER. IMPROPER CONNECTION MAY CREATE THE RISK OF ELECTRICAL SHOCK. USE OF SUCH ADAPTERS IS NOT PERMITTED IN CANADA.**

**WARNING: TO REDUCE THE RISK OF FIRE OR ELECTRIC SHOCK, DO NOT USE THIS FAN WITH ANY SOLID STATE SPEED CONTROL DEVICES.**



### CAUTION

- **DO NOT** operate any fan with a damaged cord or plug. Discard fan or return to an authorized service facility for examination and/or repair.
- **Unplug or disconnect** the unit from the power supply before servicing.
- **DO NOT** use extension cords, power strips, power taps, outlet style air fresheners or other cord connected device, as these devices may overheat and cause a fire hazard.
- **DO NOT** route power cord under rugs, carpets, runners or furniture. This may damage the cord or cause it to overheat creating a fire hazard.
- **ALWAYS** place the Fan on a stable, flat, level surface while in operation to prevent the Fan from overturning.
- **NEVER** insert or allow fingers or objects to enter grill openings while Fan is in operation or injury and/or damage to the Fan may occur.
- **DO NOT** block, cover or obstruct air flow to or from the Fan while in operation.
- **DO NOT** use this Fan outdoors or near wet locations such as a bath tub, pool, hot tub or pooled water. Use of this Fan in a wet location may create a shock hazard.
- **DO NOT** run cord under carpeting. Do not cover cord with throw rugs, runners, or similar coverings. Do not route cord under furniture or appliances. Arrange cord away from traffic area and where it will not be tripped over.
- **DO NOT** use this Fan if it has been damaged or is not functioning properly.
- **DO NOT** operate unit in stacked position.
- **THIS FAN DOES NOT MEET THE REQUIREMENTS OF NEC ARTICLE 547-7 (2008).** This Fan is not suitable for use in agricultural facilities including areas where livestock, poultry or other animals are confined. Please refer to National Electric Code (NEC) Article 547-7 (2008), or applicable state or local codes or standards relating to electrical requirements for agricultural buildings.
- **THIS FAN DOES NOT MEET THE REQUIREMENTS OF NEC ARTICLE 500 (2008).** This Fan is not suitable for use in hazardous locations. Please refer to National Electric Code (NEC) Article 500 or applicable state or local codes or standards relating to electrical requirements for hazardous locations.
- **Never Place your face, hands, or other susceptible body parts in the air stream, inlets, or outlet devices.**
- **All units must be monitored while in use.**

## MAINTENANCE

### WARNING

To reduce the risk of electrical shock and fire please observe the following instructions:



- Always unplug the cord before moving, servicing or cleaning.

- **NEVER** place the Fan in water.

- Clean the Fan only with a vacuum equipped with a brush attachment; the vacuum will remove the lint and dirt from inside the Fan.



- **NEVER** attempt to take apart the Fan.

- Clean the body of the Fan with a soft cloth only.

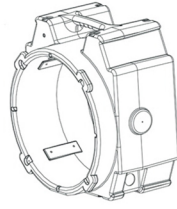
- **NEVER** use ALCOHOL or SOLVENTS such as gasoline, benzene, paint thinner, or other harsh cleaners.



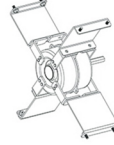
# Polar Bear PBX24

## PART LIST

A. Housing ----- X1



B. Motor ----- X1



C. Capacitor ----- X1



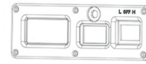
D. Fan ----- X1



E. Air Exhaust Grill ----- X1



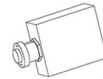
F. Switch Cover ----- X1



G. Air Intake Grill ----- X1



H. Circuit Breaker ----- X1



I. Switch ----- X1



J. Meter ----- X1



K. Power Cord ----- X1



L. Feet with Screw ----- X2



M. Feet ----- X4



N. GFCI ----- X2



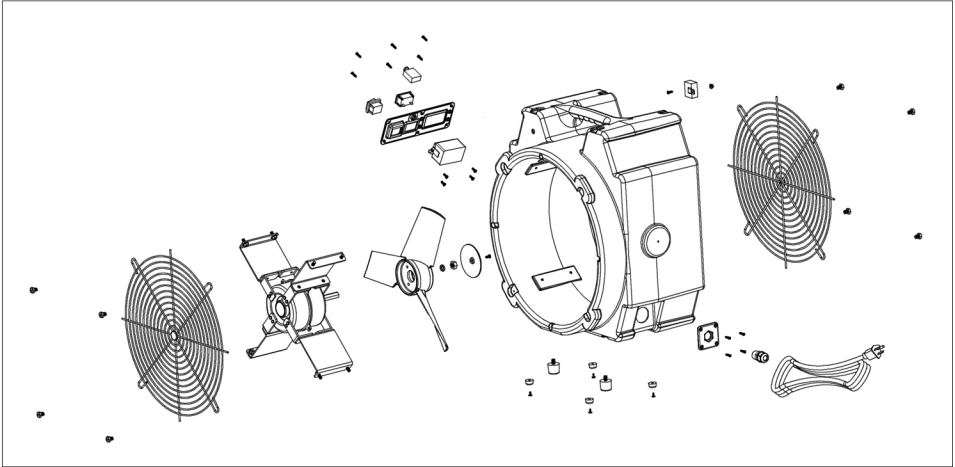
P. Cord Connector ----- X1



Q. Cord Cover ----- X1



# Explosion of Polar Bear PBX24



## Operator Panel Features

CIRCUIT BREAKER

G.F.C.I. RECEPTACLE

HOURLY METER

2 SPEED POWER SWITCH WITH INDICATION LAMP



### Run-Time Hour Meter

The operator interface panel is equipped with an Automatic LCD Hour Meter. The Hour Meter displays cumulative run time to ensure accurate time tracking. The Hour Meter is not resettable and cannot be erased.

### Resettable Circuit Breaker

Resettable circuit breaker protects the unit and connected daisy chained devices. The circuit breaker is designed to sense the total current drawn through the circuit. When more than 12 amps of electrical current are drawn through the unit's power cord, the circuit breaker trips.

**G.F.C.I. (Ground Fault Circuit Interrupter)** protection promotes operator safety during applications. G.F.C.I. devices "trip" when a fault to electrical ground is sensed.

A tripped G.F.C.I. can be reset only when the unit is connected to a wall outlet providing standard voltage. Reset the tripped G.F.C.I. by pressing the "RESET" button.

### Warning!

The total amperage of the Polar Bear PBX24 Air Mover plus all other devices plugged into the receptacle must not exceed 12 amps.

# WARRANTY REGISTRATION

Please complete and mail or fax your product warranty registration card. For multiple units, please list serial numbers on a separate sheet.

THIS WARRANTY CARD AND YOUR BILL OF SALE MUST BE PRESENTED FOR WARRANTY SERVICE.

Your Company Name	_____
Contact Name	_____ Title _____
Address	_____
City	_____ State _____ Zip _____
Phone	_____ Fax _____
E-mail	_____
<b>Polar Bear PBX24</b>	
Serial Number	_____ Date of Purchase ____/____/____
Purchased From	_____
Additional Comments/Suggestions	_____ _____ _____



B-Air

550 South Ayon Ave. Azusa, CA 91702

1-877-800-2247 (BAIR)

Fax: (626) 385-3307

Email: [info@b-air.com](mailto:info@b-air.com)

Web site: [www.b-air.com](http://www.b-air.com)

PLACE  
STAMP  
HERE



550 South Ayon Ave  
Azusa, CA 91702

---

---

---