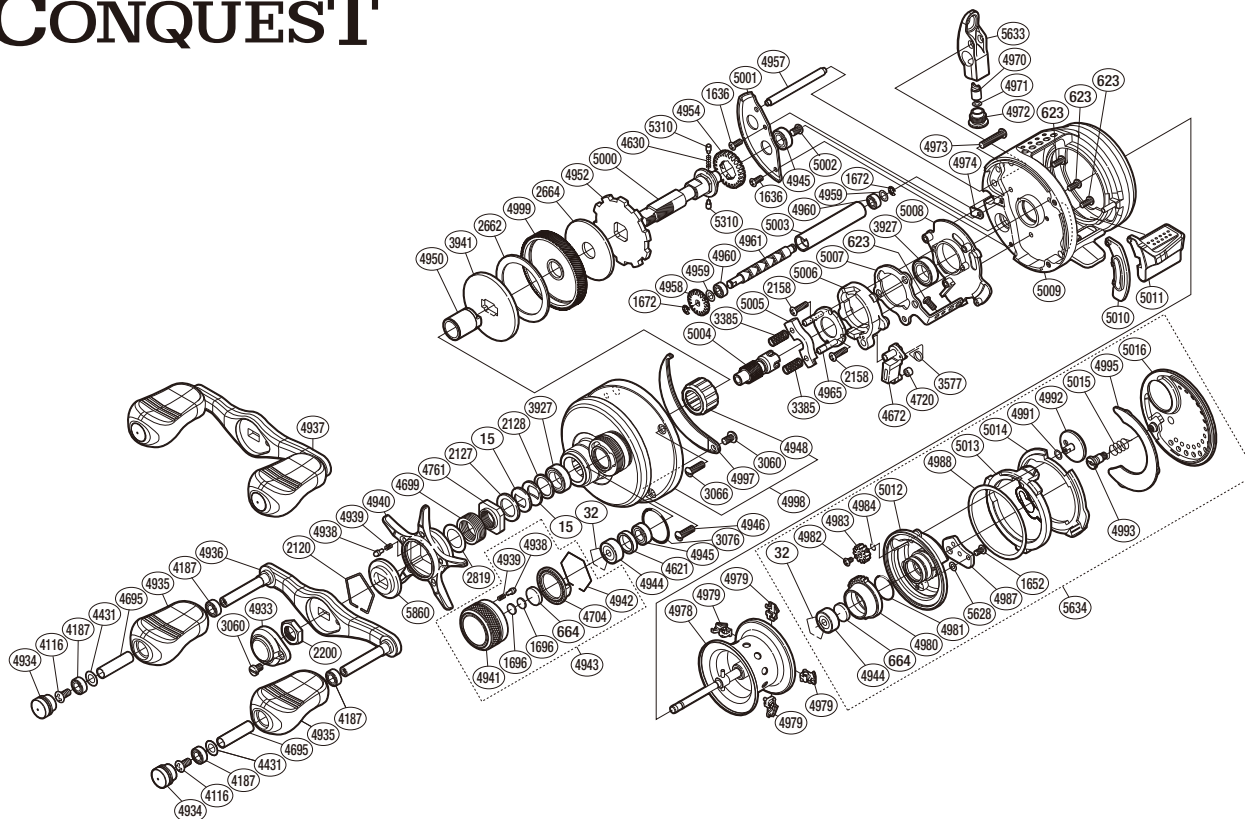


# SHIMANO

## CALCUTTA CONQUEST

### CTCQ-101



(51RH820101U)

#	Part No.	Description	#	Part No.	Description	#	Part No.	Description
15	10D60	Drag Spring Washer	4934	10FMG	Handle Knob Seal	4987	10AYW	Damper Bush(A)
32	10GEW	Bearing Retainer	4935	10325	Handle Knob	4988	104MY	Washer
623	103C0	Screw	4936	10A68	Handle Shank Assembly	4991	10HYU	Washer
664	1057S	Spacer B	4937	10CF2	Handle Assembly	4992	10EV4	Br Dial
1636	10LVG	Screw	4938	10B27	Click Pin	4993	10GM5	B Side Plate Insert
1652	10LVE	Screw	4939	10988	Click Spring	4995	104H7	B Side Plate Seal
1672	105NC	E Lock	4940	10AU1	Star Drag	4997	10QCD	Set Plate Sticker
1696	10896	Cast Control Spacer	4941	10KDN	Cast Control Cap	4998	10HPZ	Left Side Plate
2120	10KXV	Click Plate Retainer	4942	10L6X	Cast Control Click Holder	4999	10CMK	Drive Gear
2127	10J1N	Star Drag Spacer	4943	10HWC	Cast Control Cap Assembly	5000	105CB	Drive Shaft
2128	105PW	Bearing Washer	4944	105C4	Ball Bearing	5001	109SW	Drive Shaft Retainer
2158	10LUX	Screw	4945	105BR	Ball Bearing	5002	10PVU	Screw
2200	10FSN	Handle Nut	4946	10C3N	Screw	5003	10NFT	Level Wind Guard
2662	1071X	Drag Washer	4948	10F34	Roller Clutch Bearing	5004	10CS3	Pinion Gear
2664	10CJ4	Drag Washer	4950	10BMX	Roller Clutch Inner Tube	5005	1046Y	Yoke
2819	10HHN	Washer	4952	10D70	Anti-Reverse Ratchet	5006	10K0Y	Clutch Cam
3060	10CZ5	Screw	4954	10J6W	Idle Gear	5007	10QGN	Clutch Plate
3066	10C3M	Screw	4957	10GUF	Level Wind Guide	5008	10BVR	Clutch Guard
3076	108W8	O Ring	4958	10FNW	Idle Gear	5009	10EVK	One-Piece Frame
3385	104BJ	Yoke Spring	4959	10GFJ	Washer	5010	10971	Clutch Bar Guide
3577	10N1V	Clutch Pawl Spring	4960	10PDA	Ball Bearing	5011	10MWG	Clutch Lever
3927	10EX8	Ball Bearing	4961	104T9	Worm Shaft	5012	10FXG	Brake Case
3941	10D3R	Key Washer	4965	10F3Y	Clutch Cam Retainer	5013	104NC	Brake Case Cam
4116	103E9	Screw	4970	10FFT	Line Guide Pawl	5014	10BAR	Side Plate Cam Lever
4187	104VX	Ball Bearing	4971	10GFH	Washer	5015	10KN9	Damper Spring
4431	10G8G	Washer	4972	10FJC	Pawl Cap	5016	10D0G	Right Side Plate
4621	10EYR	Bearing Spacer	4973	10A6J	Screw	5310	10HJG	Idle Gear Pin
4630	10JDX	Idle Gear Spring	4974	10FTB	Worm Shaft Retainer	5628	10280	Washer
4672	105ZV	Clutch Pawl	4978	10L3M	Spool Assembly	5633	10TSX	Line Guide
4695	109VL	Handle Knob Pipe	4979	1046H	Brake Shoe M	5634	101Z5	Right Side Plate Assembly
4699	10A71	Star Drag Spring	4980	10EXR	Brake Pipe Gear	5860	10J26	Star Drag Click
4704	10L2F	Cast Control Click Plate	4981	10LA8	O Ring			
4720	1048C	Clutch Pawl Bushing	4982	10PRT	Screw			
4761	10A0C	Star Drag Nut	4983	10BGM	Br Dial Gear			
4933	10Q5R	Handle Nut Plate	4984	10FMT	O Ring	4692	10LQ0	B-100 Oil (Accessory)

Please note that the number of adjusting washers may not be the same as shown in the exploded views.  
(Adjustment will vary with each individual product.)

(241204)\_004