

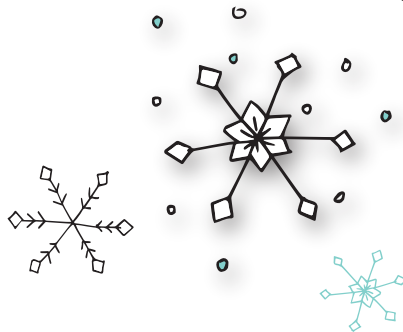
CHECK OUT MORE HOLIDAY KITS FROM CREATIVITY FOR KIDS®



#6197000

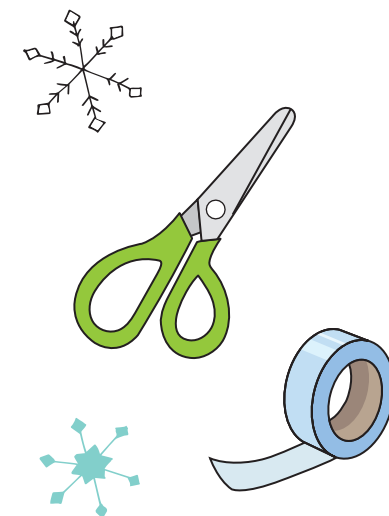


#6198000



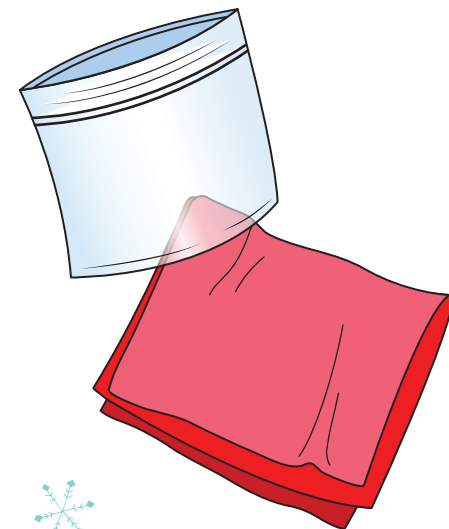
# COLOR-CHANGING STRING ART TREE

Combine gold sequin string, faceted rhinestones, and a color-changing tea light to make a beautiful holiday centerpiece, or a gift for someone special. Add the mini foil gift boxes to complete your holiday display.



## ITEMS TO GATHER

- Plastic table cover
- Plastic Bag (must be large enough to fit string inside with a little room to move)
- Tape
- Scissors



## Before you begin, read all instructions carefully.

Wear old clothes and cover your work surface. Wrapping the tree form may be easier for a young crafter if they have a helper. Ask an adult or an older friend to craft with you.

Things can get a little sticky- but no worries, this glue is washable! If you want to keep your hands clean, you can wear the crafting gloves, but some people find it easier to craft without them.



## BATTERY WARNINGS

- Discard button batteries carefully.
- Do not allow children to play with button batteries. Keep button batteries out of your child's reach.
- To avoid accidental swallowing, never put button batteries in your mouth for any reason.
- If a button battery is ingested, immediately seek medical attention and call your local poison center.
- Be sure the battery compartment is tightly screwed closed.
- Different types of batteries or new and used batteries are not to be mixed.
- Non-rechargeable batteries are not to be recharged.
- Rechargeable batteries are only to be charged under adult supervision.
- Rechargeable batteries are to be removed from the toy before being charged.
- Batteries are to be inserted with the correct polarity.
- Exhausted batteries are to be removed from the toy.
- The supply terminals are not to be short-circuited.

## Battery Installation:

**Batteries should be replaced only under adult supervision. You will need a small Phillips head screwdriver and three, AG10 - 1.5V batteries. To install, follow the diagram below and on the bottom of your tea light.**

1. Remove the screw.
2. Pry open the cover.
3. Replace the batteries with correct polarity.



4. Replace the battery cover and screw.

**CREATIVITY  
counts®**

Creativity Can™ develop the skills needed to achieve lifelong success.

Creativity develops children's problem solving and critical thinking skills - it's the catalyst for invention, innovation and ideas that influence the future.

[www.creativitycan.com](http://www.creativitycan.com)

[www.CreativityforKids.com](http://www.CreativityforKids.com)

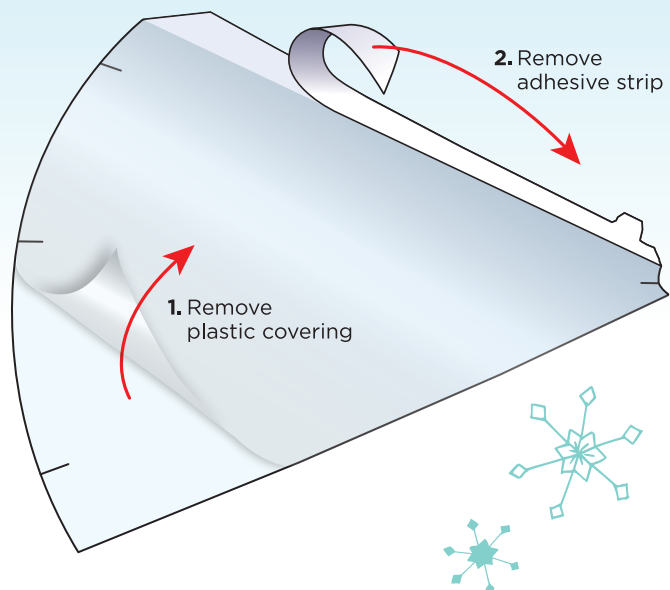
#6196000 Color-Changing String Art Tree  
© Faber-Castell USA, Inc.  
Cleveland, Ohio 44125  
[www.fabercastell.com](http://www.fabercastell.com)  
Designed in USA  
Made in China  
Non-toxic Safe for children  
Conforms to ASTM D-4236



## MAKE THE TREE FORM

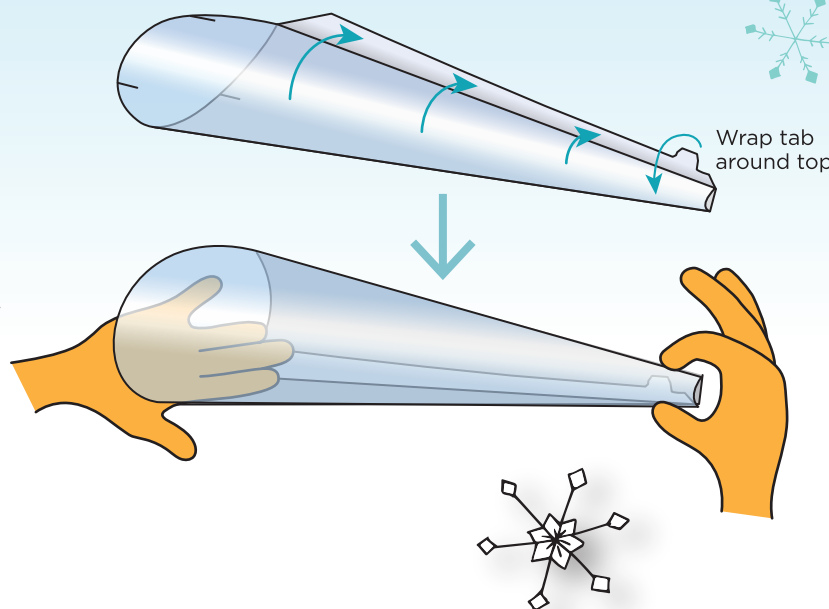
1

Remove the protective plastic covering. The tree form includes an adhesive strip. With the adhesive facing up, peel off the release paper.



2

Roll the tree form into a cone shape lining up the edge of the plastic to the edge of the adhesive. Press firmly along the adhesive to secure the cone.

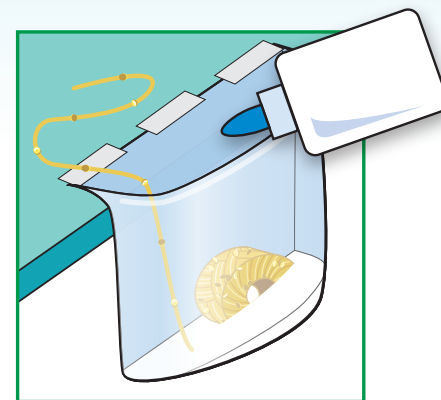


3

**Save a little glue for attaching your rhinestones and tree topper later.**

Tape your bag to the edge of your work surface. **Before taping to any surface check with an adult first.** Pour the glue inside your bag.

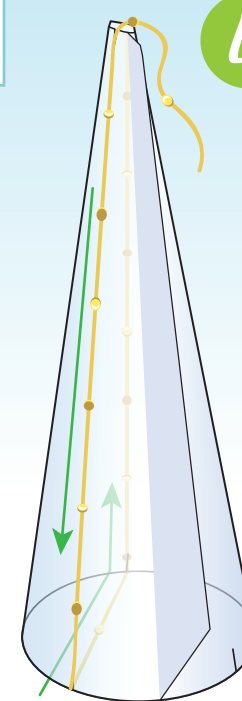
Place the gold sequin string inside the bag. Squish it around a bit until the string is covered with glue.



**Helpful Hint** - Have your crafting helper "feed" you the string. If it tangles, cut the string and continue with the new end.

4

Insert the string end into the top slot of your tree form. Pull it down to one of the bottom slots, across to another bottom slot then up to the top slot as shown.

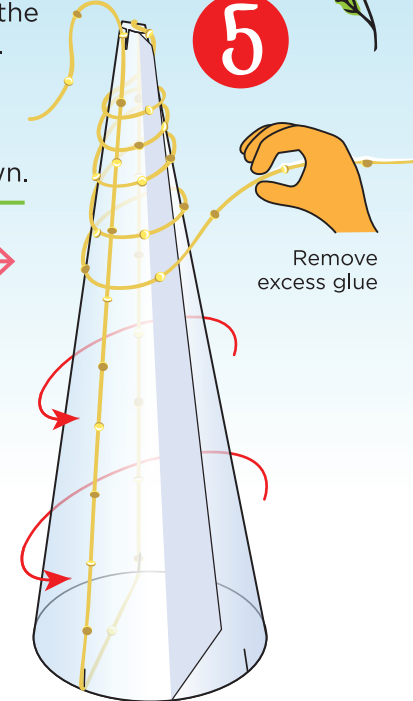


5

Wind the string around the tree form as shown.

Pull the string between your fingers to remove the excess glue. You can also ask your crafting partner do this.

Continue winding up and down the cone, filling in the bare spots. When you are finished winding, spread on another layer of glue to make it extra sturdy.



## REMOVE THE TREE FORM

6

**When completely dry**, snip the top and bottom end strings where they are attached to the slots. Carefully remove the tree from the cone.



**PRO TIP:** Tree must be completely dry! If you are having trouble releasing the string, squeeze the bottom of the plastic cone inward and gently twist. You can also insert a plastic spoon handle or other flat object between the cone and the string to help release it. For an extra-sturdy tree, you can keep your String Art tree on the plastic cone.

7

**Small Rhinestones** - Starting at the top of the tree, add a dot of glue wherever you want to place a rhinestone. To pick up the rhinestone, press your finger against the top, and then set it into the glue. Allow to dry.

**Medium and Large Rhinestones** - Remove the top of the release paper from the sticky dots. Add a rhinestone to each sticky dot as shown. Pull them off the sheet one by one and then place them on your tree - medium rhinestones in the middle, larger rhinestones on the bottom. Gently push the rhinestone into the tree. Place your other hand inside the tree and push the rhinestone from the opposite direction. This will help form a firm adhesive bond. Work gently so you don't damage your tree.

Add glue to the inside back of any rhinestone as needed for extra security.

**Star Tree Topper** - Peel off the release paper from the star. Position the wire in the middle of the adhesive side as shown. Match up the other star and sandwich them together. Insert the wire into the top of the tree. Weave/wrap it around to hold it in place. Bend the wire as needed to position the star.



## DECORATE YOUR TREE



## LET IT GLOW

8

Remove the plastic tab from the bottom of the tea light. Turn it on and place the tree over the light. **Refer to battery instructions on the back.**



Assemble the gift boxes. Tie on little bows using the metallic cord. Arrange them around your tree.

**Now enjoy your holiday centerpiece!**

As with any handcrafted item, handle it with care. Turn off the light when not in use.

