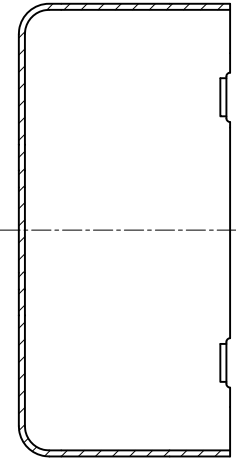
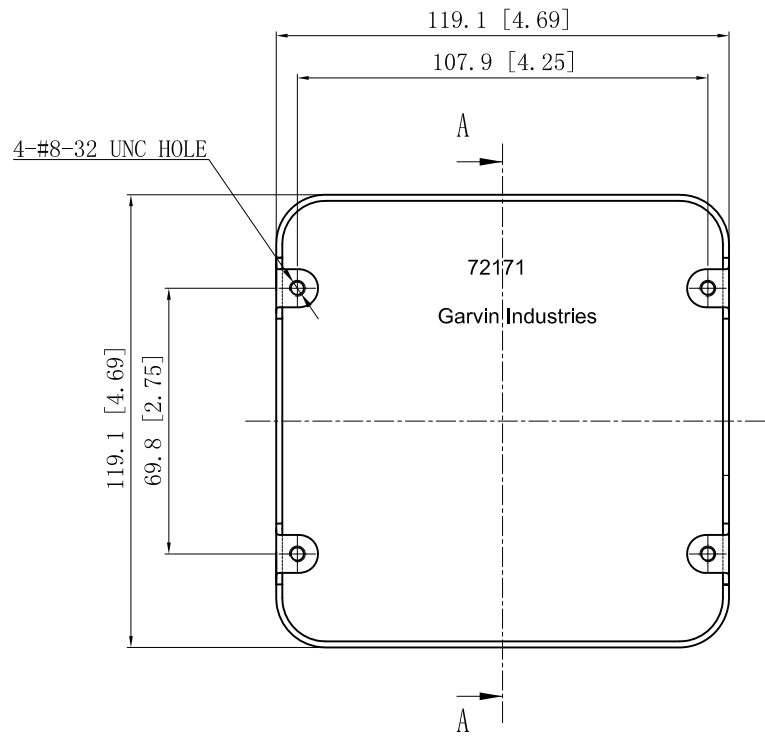
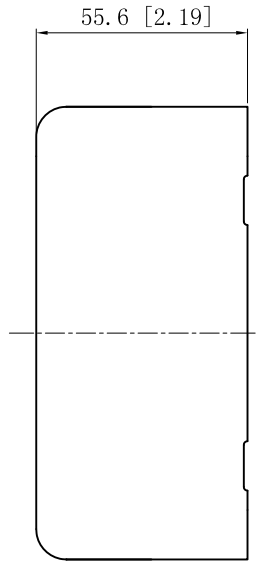
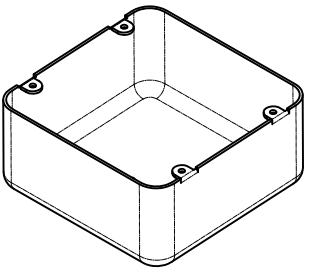
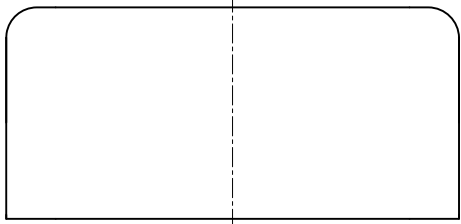


SIDES	BOTTOM
Material: 0.051~0.059"- Stainless steel 316	



CUTAWAY VIEW A-A

This data sheet is for reference only. GARVIN INDUSTRIES reserves the right to make changes to the design without prior notice.

DESCRIPTION
TRADE REFERENCE TERMS

STANDARD PACKING
10 PCS

<b>GARVIN INDUSTRIES</b>		
TITLE 4-11/16" SQUARE "DRAWN" BOXES (2-1/8" DEEP)		
SIZE A4	DWG NO. 72171-BLNKSS	REV
DATA SHEET		