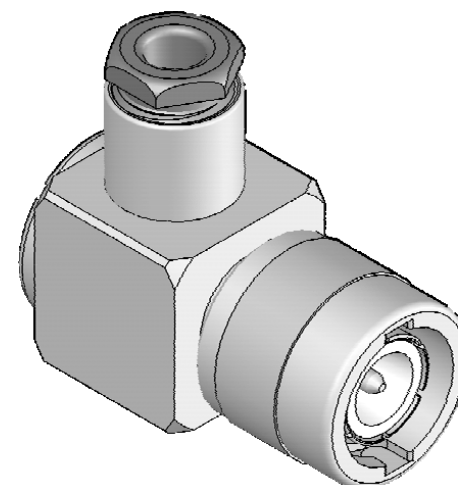
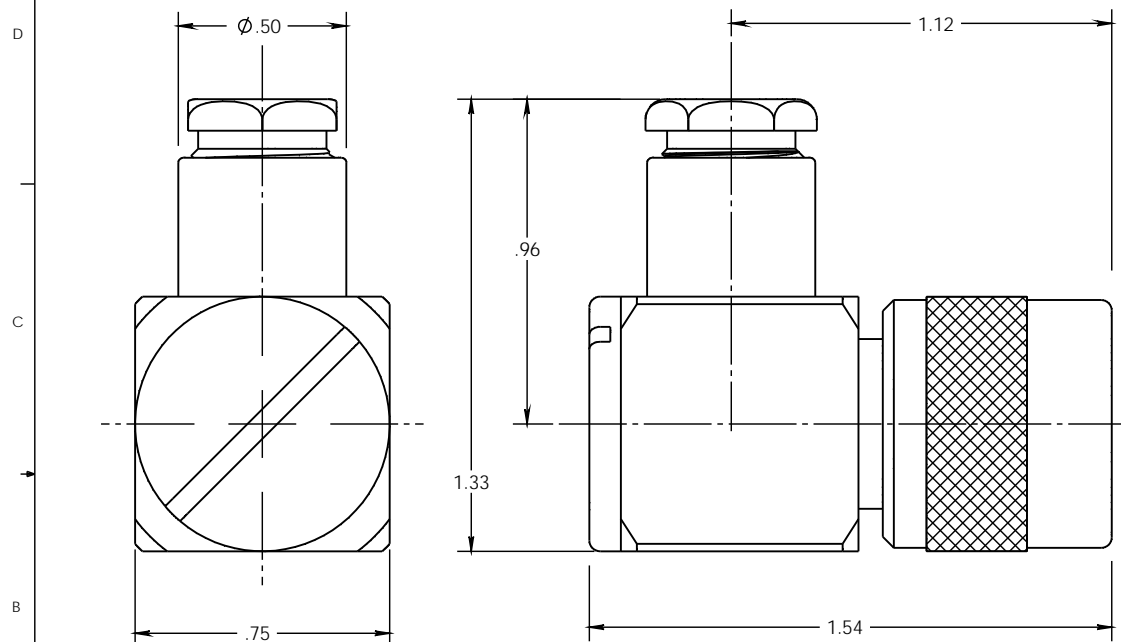


This document, including the design, configuration and mechanical features revealed herein are the sole, confidential and proprietary property of TRU Corporation. Reproduction or use thereof, in whole or part, is prohibited without the prior written consent of TRU Corporation.

REV.	DESCRIPTION	DATE	APPROVED
-	ORIGINAL ISSUE	6/1/87	RMK
A	ECO-3112	5/15/06	RMK



Notes:

Series C (m) Plug, Right Angle,
accrss cap type, weatherproof,
with captive contact.

Accommodates coaxial cables:
RG-55, 58,141,142, 223 & others.

Weight: 0.18 lbs.

Materials: insulators - Teflon
gaskets - silicone rubber
all metal parts - silver plated brass
Electrical: voltage rating - 1,000 volts peak
practical frequency limit - 1,000 MHz

MATERIAL:		DO NOT SCALE DRAWING		DRAWN rkoch		DATE 6/1/87	
		UNLESS OTHERWISE SPECIFIED: DIMENSIONS ARE IN INCHES		ENG APPR. KOCH		DATE 6/1/87	
		TOLERANCES: FRACTIONS: $\pm 1/64$ XX: $\pm .01$ XXX: $\pm .005$ ANGLES: $\pm 1/2^\circ$		MFG APPR.		DATE	
		MACHINED SURFACES: 63/		OTHER APPR.		DATE	
COMMENTS:				THIRD ANGLE PROJECTION			
surface area: sq inch		weight: 0.175 lbs					
				TRU CORPORATION 245 LYNNFIELD STREET, PEABODY, MA 01980 <i>The Custom Interconnect Leader™</i>			
				TITLE: C (m) PLUG, RIGHT ANGLE			
				SIZE B		DWG. NO. TRU-5935	
				CAGE CODE: 92180		SCALE: 3:1	
						SHEET 1 OF 1	
						REV A	