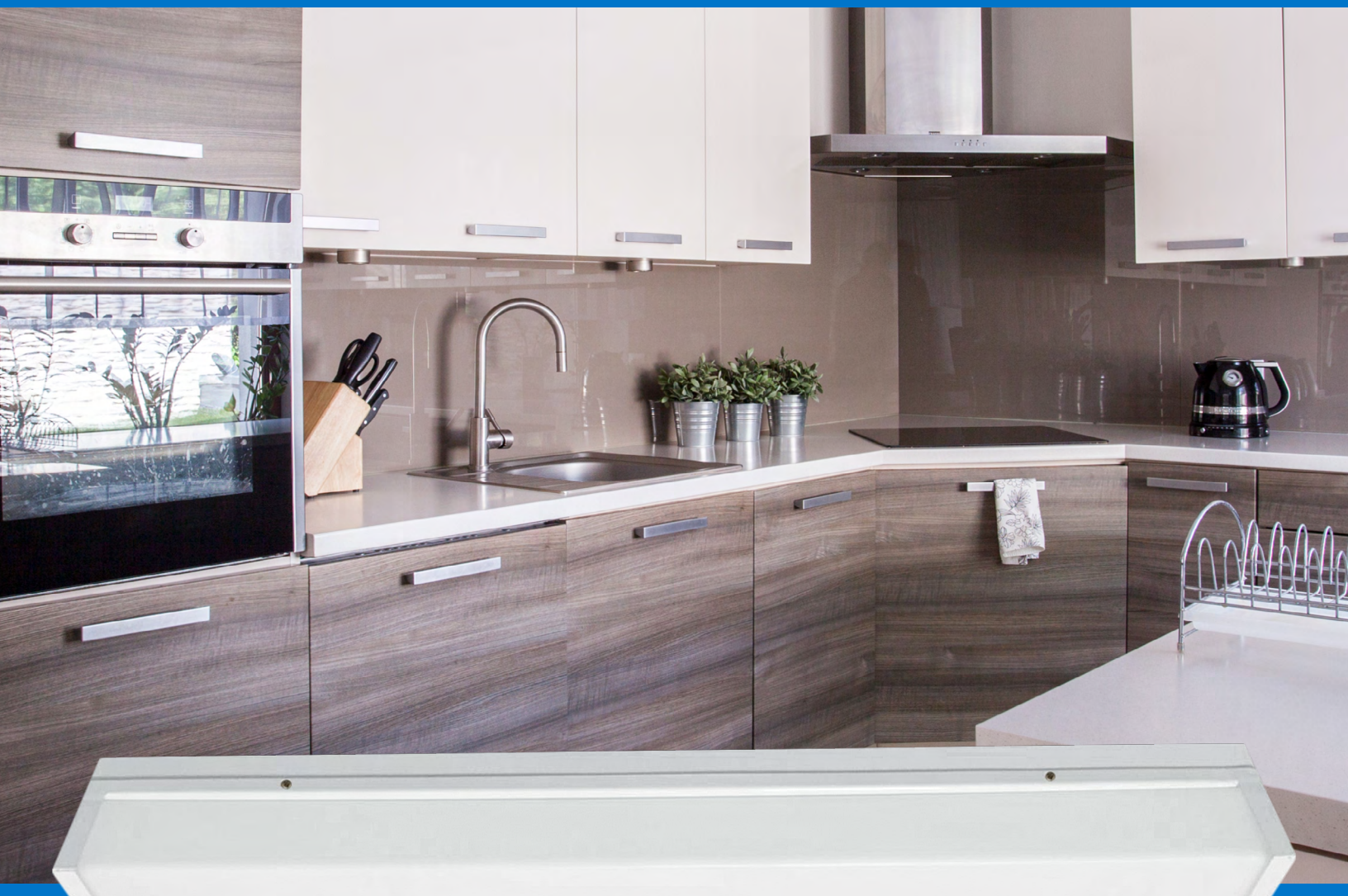


**LED** Surface Mount Wrap  
**WPR**



**Small in Form, Big on Performance**

# WPR

## LED Surface Mount Wrap

**Versatile enough for use in both residential and light commercial applications.**

The **WPR LED Surface Mount Wrap** delivers an impressive 3100 lumens without extra power draw or lamp replacements seen in fluorescent wraparounds. With 0-10V continuous dimming capabilities, glare-free illumination and accurate color rendering, this fixture is an affordable upgrade to most any indoor or outdoor space. The WPR's surface mount installation quickly integrates with a 4/0 plastic or metal J-box, making it a perfect choice for hallways, stairwells, schools, offices, garages, closets, and utility areas.

### Full range dimming control

0-10V continuous dimming capabilities

### Damp Location Rated

Perfect for indoor or outdoor use

### Glare-Free Illumination

Fully-wrapped, milky white diffuser eliminates hot spots and pixilation

### High Performance LEDs

Energy efficient with increased lumen output over 3100 lumens -- more than 460 lumens greater than previous fixture version

### Easy Installation

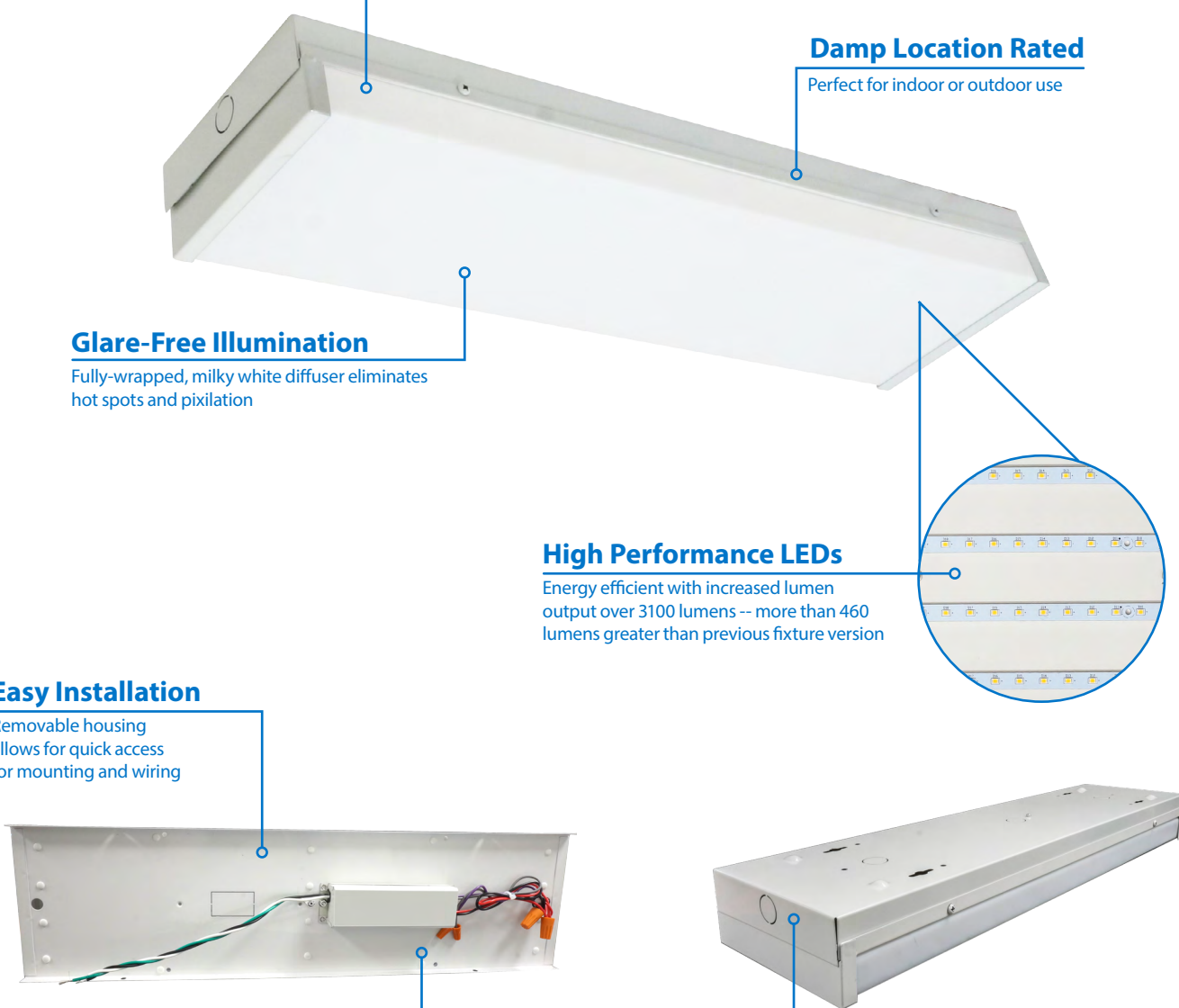
Removable housing allows for quick access for mounting and wiring

### Cool Operation

Emits no UV radiation or heat, which reduces maintenance costs

### Multiple Fixture Runs

Knockouts provide easy end-to-end runs



#### Construction

- Heavy 20 gauge steel construction
- Smooth sides for safe handling

#### Optical System

- Full wrap milky white diffuser eliminates hotspots and pixilation

#### Electrical

- Utilizes high performing LEDs
- Driver delivers full-range dimming from 0 - 10VDC
- Silent and flicker-free operation
- Tight LED binning ensures color uniformity
- Operating temperature of 0° to 120°F (-18°C to 40°C)
- Universal input 120-277VAC
- Greater than 90 lumens per watt
- TM-21 Calculated L70(9k) life 67,000 hours
- LM-79, LM-80 testing performed in accordance with IESNA standards
- 120V meets FCC Part 15, Subpart B, class B standards for conducted and radiated emissions
- 277V meets FCC Part 15, Subpart B, class A standards for conducted and radiated emissions

#### Installation

- Easy surface mount installation
- Removable fixture housing allows easy access for mounting and wiring
- Can be surface mounted to walls and ceilings for application variability
- Knockouts provide for easy end-to-end runs
- For installations where power surge may be possible, NICOR recommends installing additional surge protection at the fixture or electrical distribution panel

#### Finish

- White powder coat finish

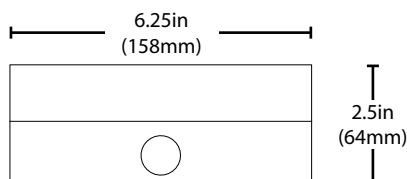
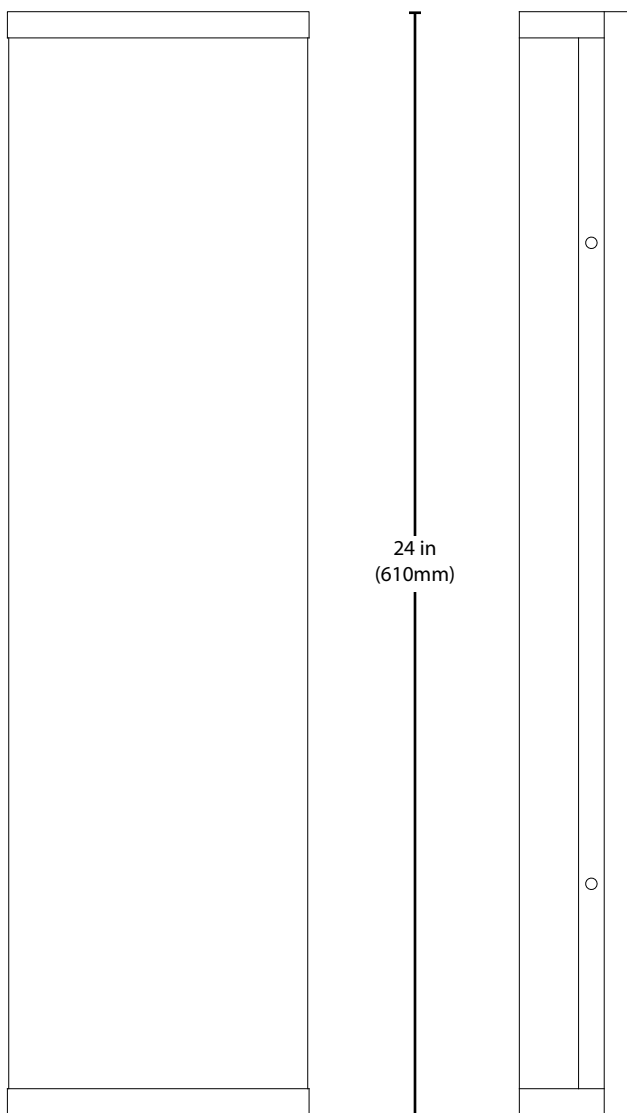
#### Warranty

- 5-year limited system warranty standard
- Warranty does not cover product failure due to an overvoltage event (power surge)

#### Product Information:

WPR-20-UNV-3K-WH

TM-21 Reported L70(9k) hours:	>54,000 Hours
TM-21 Calculated L70(9K) hours:	67,000 Hours
Input Voltage:	120-277 VAC
Power Draw:	34W
Delivered Lumens:	3116 Lm
System Efficacy:	91.6 Lm/W
Correlated Color Temp:	3094K
Color Rendering Index:	83.6 CRI



#### WPR Ordering Information

Example: WPR-20-UNV-3K-WH

Series	Version	Voltage	CCT's	Trim Color
WPR	20 (Version 2)	UNV (120-277)	3K (3000 K)	WH (white)
			4K (4000 K)	
			5K (5000 K)	

### Warehouse Locations

Albuquerque, NM  
Atlanta, GA  
Detroit, MI  
Hayward, CA  
Indianapolis, IN

Miami, FL  
San Antonio, TX  
Syracuse, NY  
Wood Dale, IL

**T 800.821.6283**

F 800.892.8393

[www.nicorlighting.com](http://www.nicorlighting.com)

2200 Midtown Pl. NE  
Albuquerque, NM 87107 USA



LIT-WPR-V2

©2017 NICOR® • ALL RIGHTS RESERVED



**NICOR**® | **LED**