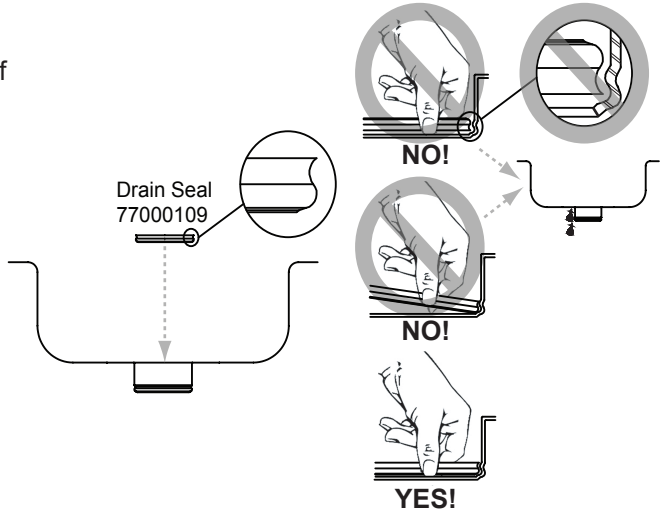


For all non-disposer installations in stainless steel Perfect Drain™ sinks.

STEP 1

Install and properly seat **Drain Seal** within groove of **Flange** of Perfect Drain™. Incorrect installation may allow leaks and void the warranty!

NO additional Sealant or Plumber's Putty is required.



STEP 2

Properly seat **Drain Body** into Perfect Drain.

Place **Gasket** over Perfect Drain™.

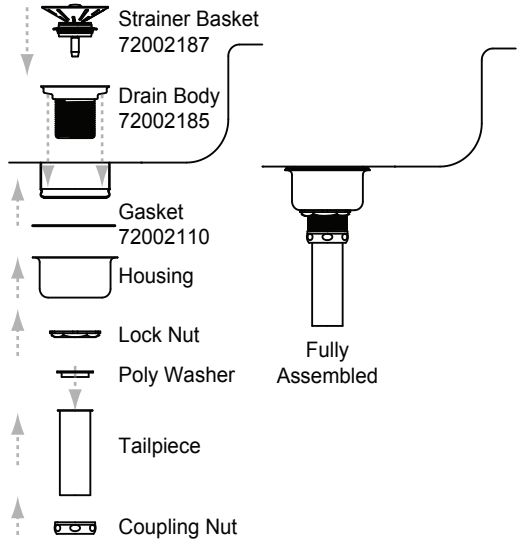
Install **Housing** over Perfect Drain™.

Thread **Lock Nut** onto **Drain Body**.

Place **Poly Washer** on **Tailpiece**.

Install **Tailpiece Assembly** onto **Drain Body** with **Coupling Nut**.

Check for leaks and place **Strainer Basket** into **Drain Body**.



BE CAREFUL TO NOT OVER TIGHTEN THE FITTINGS.

In keeping with our policy of continuing product improvement, Elkay reserves the right to change product specifications without notice. Please visit elkay.com for most current version of Elkay product specification sheets.

This specification describes an Elkay product with design, quality, and functional benefits to the user. When making a comparison of others producers offerings, be certain these features are not overlooked.

Stainless Steel Perfect Drain™ InSinkErator® Disposer Installation Instructions

in sink erator®

Elkay® Perfect Drain™ sinks are designed and approved for compatible disposers manufactured by InSinkErator® utilizing the Quick Lock® mounting configuration.

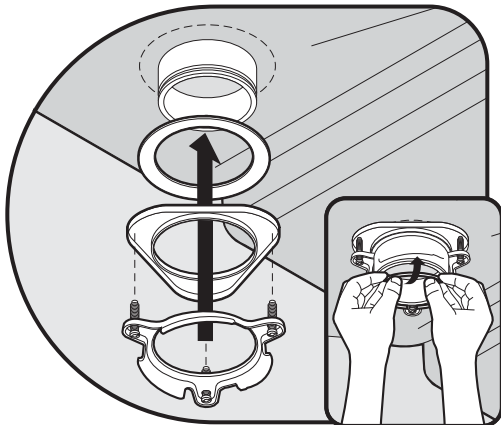
Use of non-approved disposers may void Elkay warranty.

InSinkErator, Quick Lock and the mounting collar configuration are trademarks of Emerson Electric Co.



To install garbage disposer onto Elkay® Perfect Drain™ Stainless Steel Sink:

1. Locate appropriate step in disposer installation guide (provided with garbage disposer) represented by image below:



2. Disassemble Quick Lock® mounting assembly components provided with disposer (1, 2, 3, 4, 5, 6)
3. Sink Flange component (1) is not required, as it is integrated into the Perfect Drain Sink bowl.
4. Follow remaining installation steps as outlined in disposer installation guide, utilizing remaining components (2, 3, 4, 5, 6)



(1)
Sink
Flange



(2)
Fiber
Gasket



(3)
Backup
Flange



Install Quiet Collar®
Sink Baffle into Flange



(4)
Mounting
Ring



(5)
Screws



(6)
Snap
Ring

WARNING!

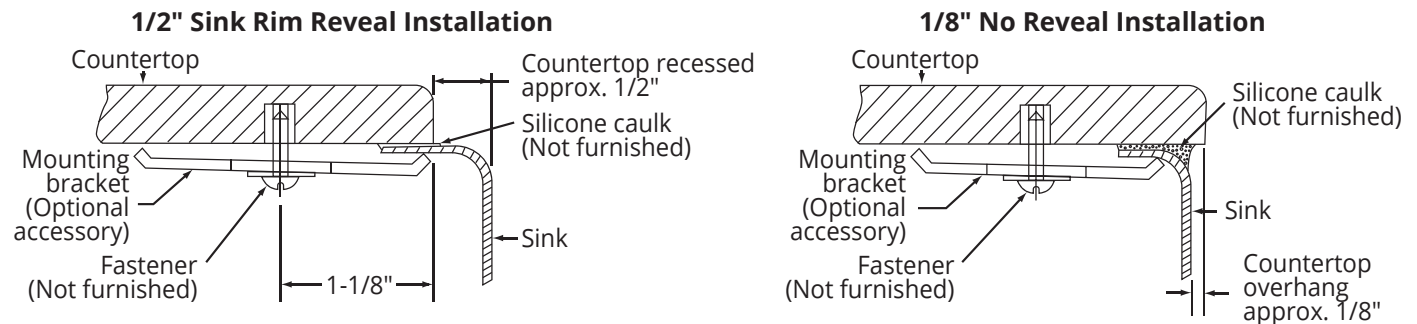
OVER-TIGHTENING OF MOUNTING ASSEMBLY SCREWS (5) COULD CAUSE PERMANENT DEFORMATION OF SINK. DO NOT USE POWER TOOLS TO TIGHTEN!

For further assistance, contact
InSinkErator® Customer Service Line
1.800.558.5700
or visit www.insinkerator.com

Attention Installer:

- Elkay recommends that undermount sinks be installed by a professional, experienced installer.
- Enclosed in the sink carton is a cutout template that can be used to make the countertop cutout per the installation type of the sink model purchased (1/2" sink rim reveal or a 1/8" no reveal). For sink models that have a cutout template with both a reveal and no reveal option, please use caution in selecting the correct outline on the template for your desired installation type. Your installer may also retrieve the desired DXF file from our website, www.elkay.com.
- Elkay undermount sinks should only be fastened to a solid surface countertop (i.e. granite / Corian®). Elkay recommends that the sink cutout and mounting holes be cut by the countertop fabricator prior to installation.
- Elkay is not responsible for the sink or countertop if damaged during installation.
- Metal edges may be sharp. Use caution when handling.
- Follow all local plumbing and building codes.
- Inspect sink for damage prior to beginning installation.

Installation Profiles



Required Tools (not included)

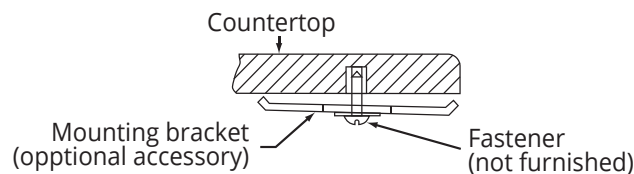


Installation



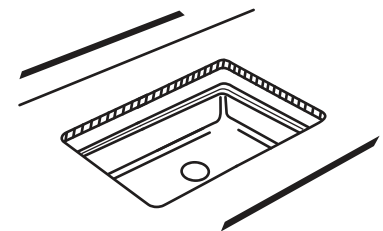
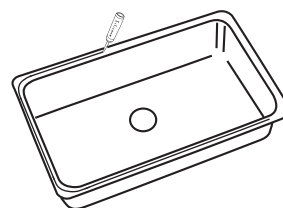
WARNING: Always wear safety goggles and gloves when installing the sink to prevent personal injury.

- 1 Fasten the mounting brackets (optional accessory - LKUCLIP8) loosely into the pre-drilled mounting holes in the countertop.



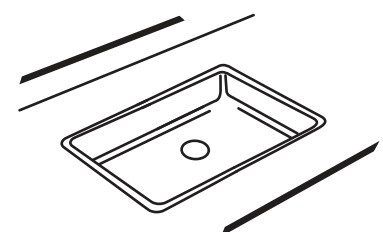
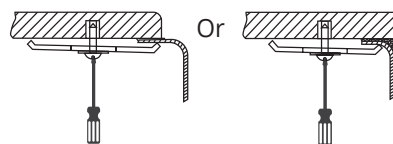
- 2 Apply silicone caulk (not included) evenly around the top of the sink flanges.

Position and align the sink under the countertop opening. Press the silicone and flange up onto the countertop.



- 3 From the underside, lightly tighten the fasteners with a screwdriver until the sink is snug against the countertop.

Check alignment of the sink to the countertop opening and then tighten the fasteners until the sink is tight against the countertop. Do not over tighten.



Wipe away any excess caulk with a rag.