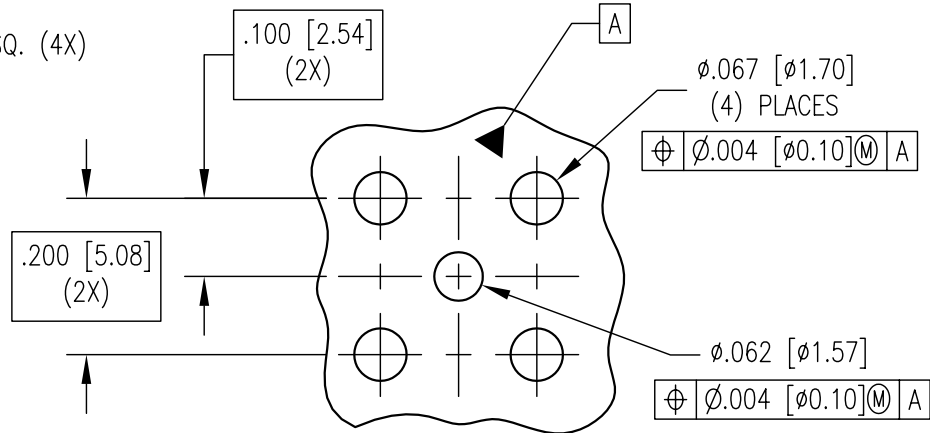
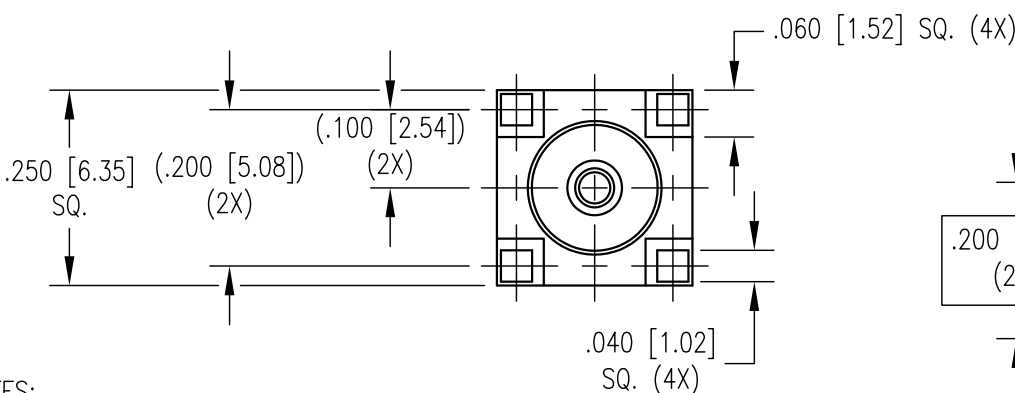
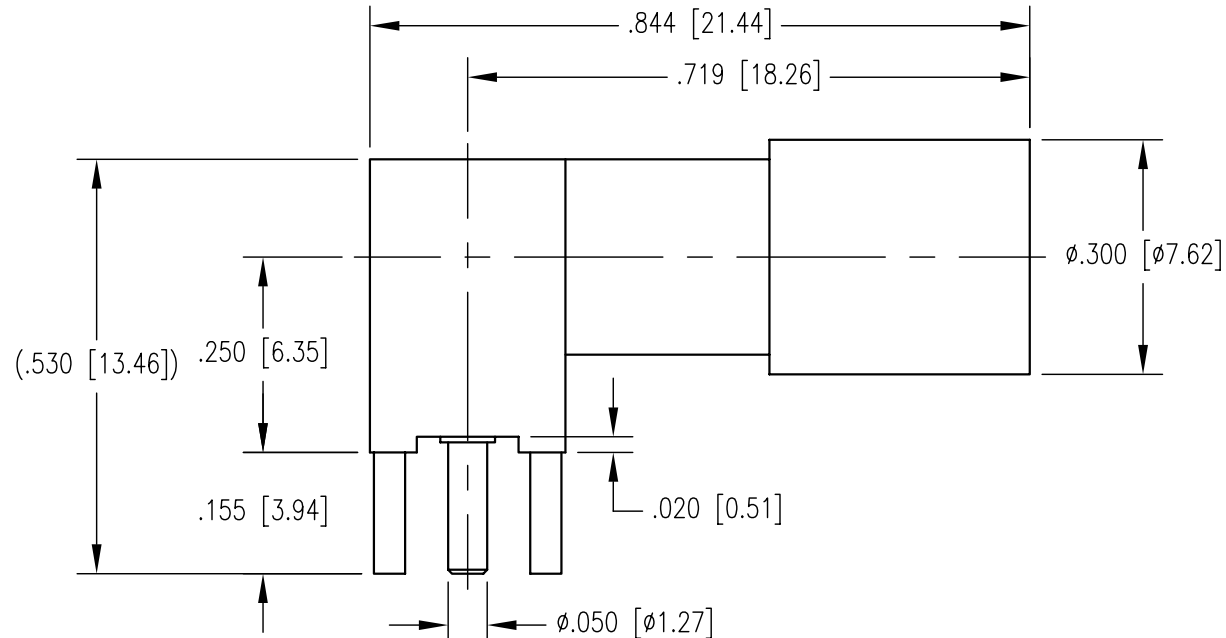


REV	DESCRIPTION	BY DATE	APPD
A	RELEASED PER ECR 7727	JED 5/23/03	JED



RECOMMENDED MOUNTING HOLE

- NOTES:
- MATERIALS:  
 FRONT AND OUTER CONTACTS: COPPER ALLOY  
 ALL OTHER METAL PARTS: BRASS PER ASTM B16  
 INSULATOR: TEFLON PER ASTM D1710
  - FINISH:  
 CONTACTS AND SHROUD: .000030 MIN. GOLD PER MIL-G-45204 OVER  
 .000050 MIN. NICKEL PER QQ-N-290  
 BODY: .000015 MIN. GOLD PER MIL-G-45204 OVER  
 .000050 MIN. NICKEL PER QQ-N-290  
 CAP: .000005 MIN. GOLD PER MIL-G-45204 OVER  
 .000050 MIN. NICKEL PER QQ-N-290

PER ASME Y14.5M-1994 UNLESS OTHERWISE SPECIFIED: DIMENSIONS ARE IN INCHES [MM] TOLERANCES: DECIMALS .XX ± .01 [0.254] .XXX ± .005 [0.127] ANGLES ± 2° SCALE: 4:1		<b>NORTHROP GRUMMAN</b> Winchester Electronics 62 Barnes Industrial Road North Wallingford, CT 06492	
<b>CUSTOMER DRAWING</b>		TITLE BMA RIGHT ANGLE PCB MOUNT RECEPTACLE	
DRAWN JED	DATE 7/8/02	CHECKED JWH	DATE 7/8/02
APPROVED JEM	DATE 7/8/02	APPROVED KJT	DATE 7/8/02
A SD363-060-0042H		SHT. 1 OF 1	REV. A