

Product Overview

The KEF Ci160ST is a high performance commercial bass speaker designed for in-ceiling and flush mount installations. It features a dedicated long-throw 160mm bass driver mounted in a square shape assembly that delivers articulate and distortion-free bass. The Ci160ST features a fire rated metal rear enclosure, is UL2043 and UL1480-5 approved, and is compatible with both 70 and 100 volt applications. The ABS assembly, bezel and grille, are finished in a proprietary moisture resistant coating and are UV protected to withstand continued operation in high moisture environments. Supplied with accessories for suspended ceiling application, the KEF Ci160ST is specifically engineered for versatility in commercial applications requiring high quality acoustic playback and foreground music applications such as lounges, sporting venues, and retail shops.

Key Features

Selectable Front Baffle Switch – The 70/100 volt switch allows the integrator to tune each speaker's output post-installation (70V - 7.5W, 15W, 30W, 60W) (100V - 15W, 30W, 60W) creating a distributed line system with the versatility to match various operating requirements.

Fire-Rated Metal Rear Enclosure – The enclosure guarantees consistent acoustic performance in various in-ceiling installations while meeting the necessary UL1480-5 fire protection and signalling requirements.

Versatile Mounting Hardware – Hardware required for mounting in both suspended and hard ceilings, plus a mandatory safety wire, is included with each speaker ensuring the installation can be completed without added costs or delays.

Paintable Grille and Bezel – The metal grille and ABS bezel are finished in a UV protective coating that can be painted to match any décor.



Architect and Engineer Specifications

The speaker shall be designed for in-ceiling and flush mount installations in suspended and hard ceilings and include a fire rated metal rear enclosure. The speaker assembly shall consist of a 160mm low frequency woofer mounted in a UV protected ABS baffle with a paintable bezel and grille. The baffle shall include a front mounted switch allowing for the selection of 8 ohm or 70/100 volt operation with settings for 70V (7.5W, 15W, 30W, 60W) and 100V (15W, 30W, 60W). The speaker will include all necessary hardware for hard and suspended in-ceiling installations along with a safety wire. The speaker shall be no more than 275mm in diameter and 188mm in depth and deliver a frequency response of 60Hz - 130Hz +/- 6dB.

The nominal impedance of the speaker shall be 8 ohm and it must achieve a minimum pressure sensitivity of 85dB SPL at 1 meter on-axis with an input of 2.83 volts. The speaker shall be UL2043 & UL1480-5 approved and meet numerous safety and performance standards listed by regulatory bodies around the world.

The speaker shall be the KEF Ci160ST.

Ci160ST



Architectural Speaker

OBSESSED WITH HIGH RESOLUTION

Specifications

Model	Ci160ST**	
Series	Classic Series	
Nominal impedance	4Ω	
Sensitivity (2.83V/1m)	85dB	
Frequency response (±6dB) with back can / rear enclosure	60Hz - 130Hz	
Frequency range (-10dB)	65Hz - 300Hz	
Nominal coverage (degrees)	N/A	
Max SPL (dB)	97dB	
Crossover frequency	-	
Drive units	LF	160mm (6.5in.)
	HF	-
Recommended amplifier power	20 - 100W	
Recommended high-pass filter (Hz)	70Hz	
Transformer taps	70V: 7.5W, 15W, 30W, 60W 100V: 15W, 30W, 60W	
Product external dimensions	Diameter Ø	275mm (10.83in.)
	Depth	188mm (7.40in.)
Cut-out dimensions	Diameter Ø	240mm (9.45in.)
Net weight	3.4kg (7.48lbs)	
Mounting depth from surface with back can	185mm (7.28in.)	
Optional rough in frame	RIF200R	
Ideal rear volume (L)	20L	
Minimum rear volume (L)	3L	
Certification	UL2043 UL1480-5	

**UL2043 and UL1480-5 approved

Visit [KEF.COM](https://www.kef.com) for more about KEF and its products.

KEF reserves the right, in line with continuing research and development, to amend or change specifications. E&OE.

The Ci speakers that utilise THX in the model name have undergone and passed certified THX approval.

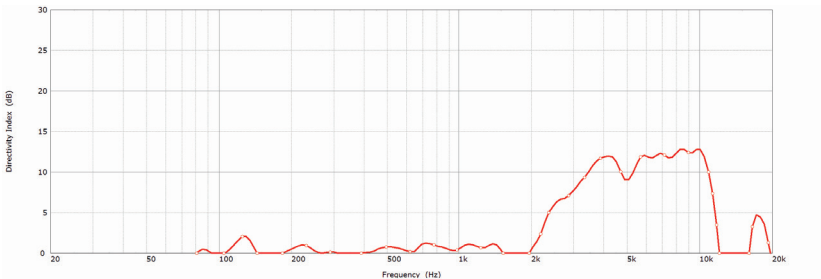
Ci160ST

Architectural Speaker

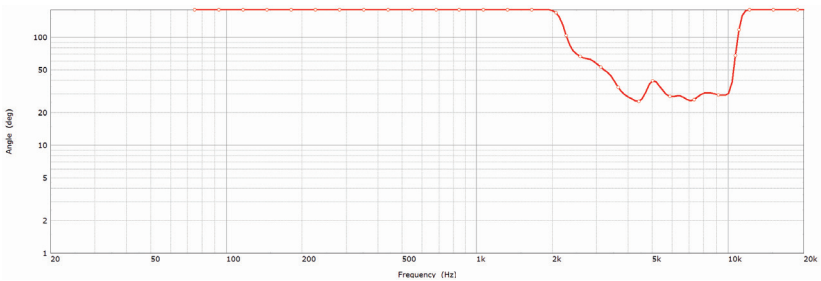


OBSESSED WITH HIGH RESOLUTION

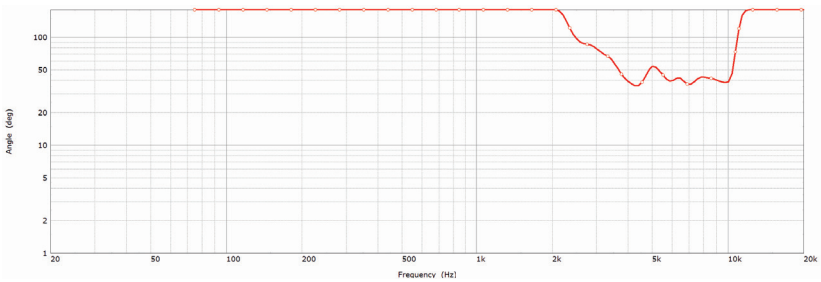
Directivity Index



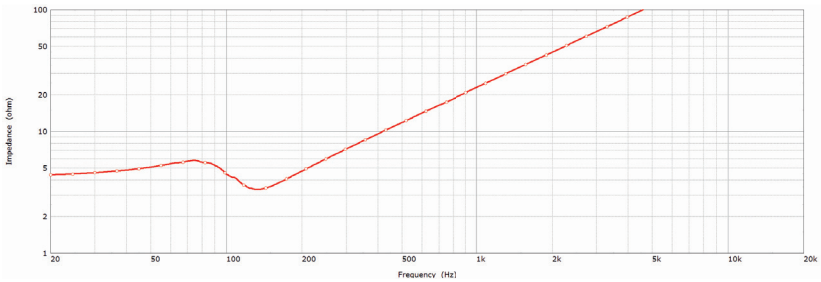
Beamwidth -3dB



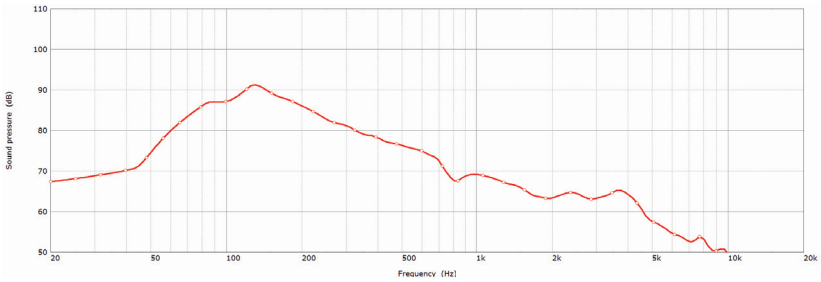
Beamwidth -6dB



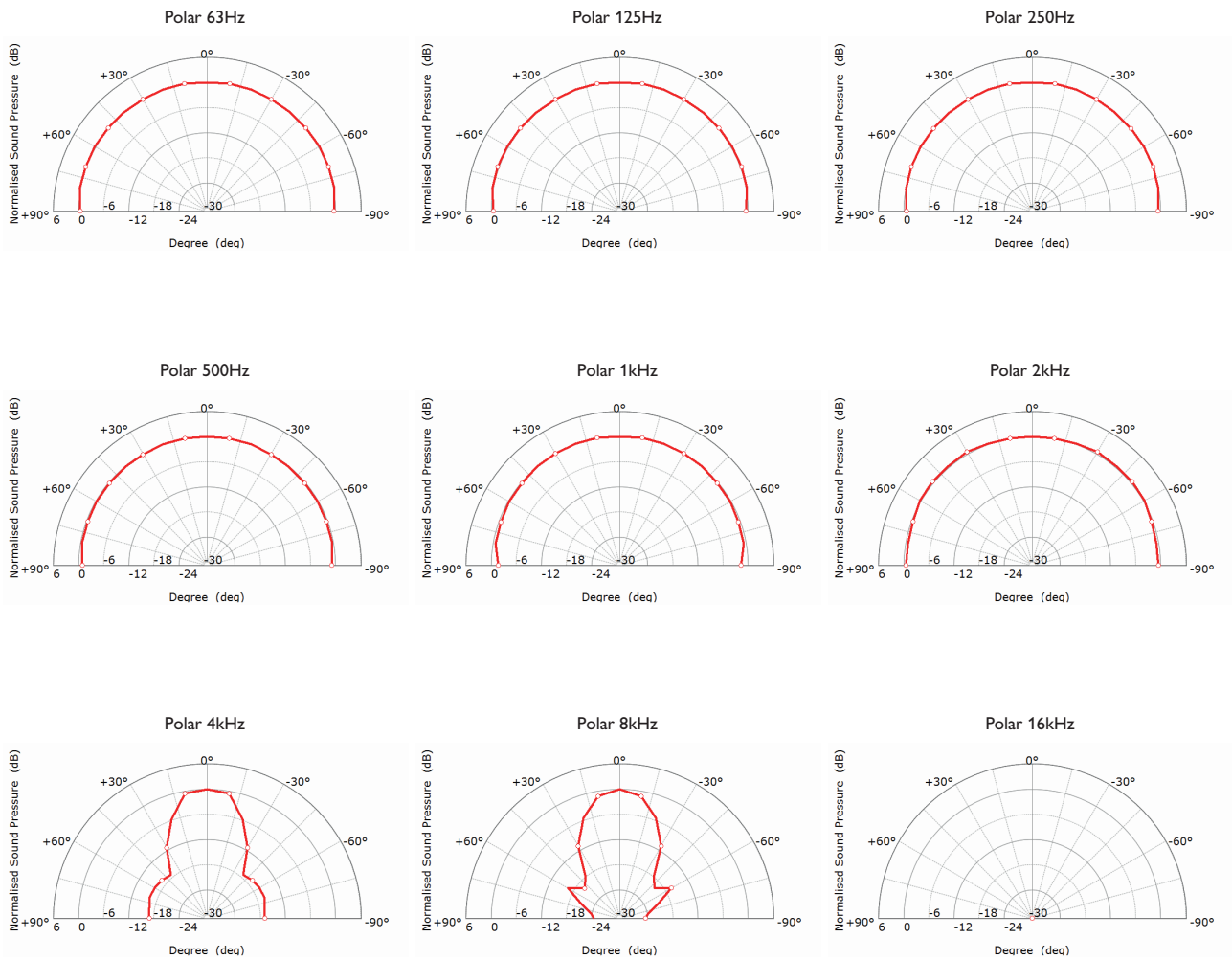
Impedance



Sensitivity (2.83V/1m)



Polar Responses



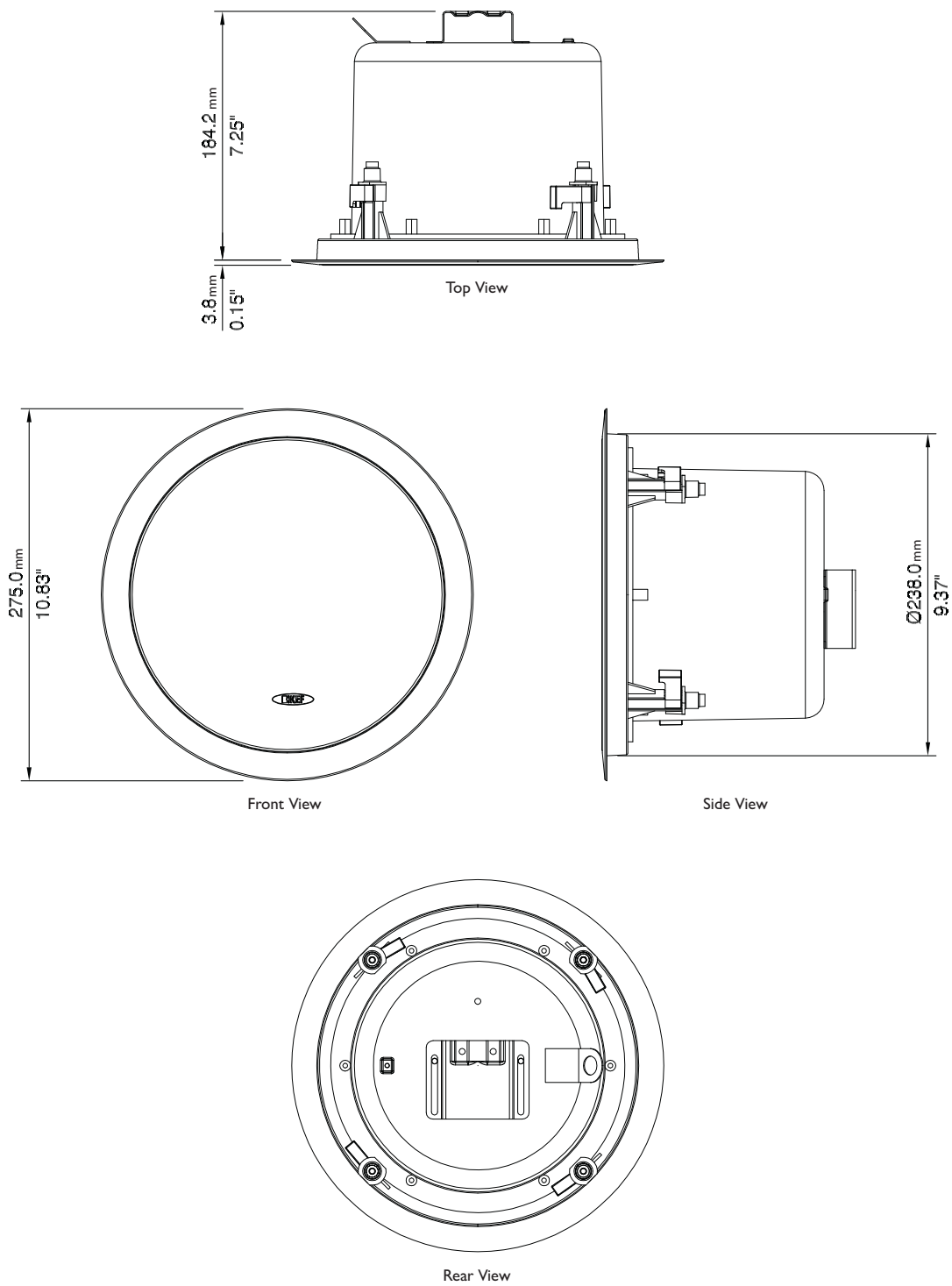
Ci160ST

Architectural Speaker



OBSESSED WITH HIGH RESOLUTION

Mechanical Diagrams



Dimensions in mm (inches)

KEF reserves the right, in line with continuing research and development, to amend or change specifications. E&OE.