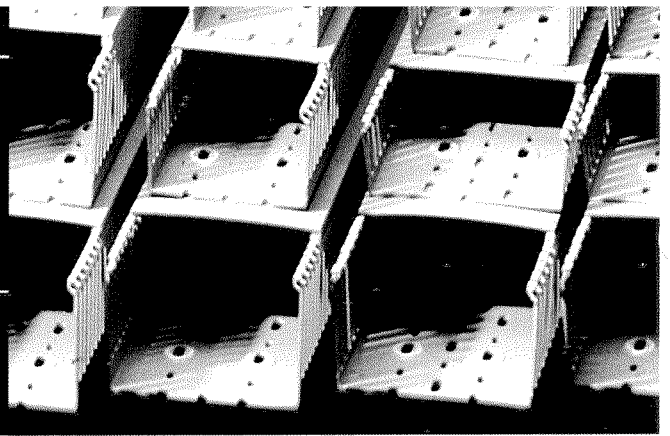


# T1-E



## DUCT SERIES

### Material

Rigid PVC,  
self-extinguishing

### Color

Light GREY RAL 7030  
WHITE

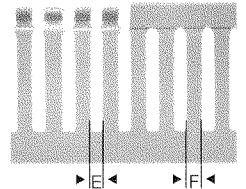
### Standard Length

6 Feet 6 3/4 Inches

### Standard Unit

Duct complete  
with cover

Catalog Number	Nominal Size (WxH)	Dimensions in inches (Actual)				Dimensions WxH (in millimeters)		Standard Carton (Qty)	
		W	H	E	F	WxH	Length (1)	Feet	
T1E-1015*	1 x 1½	1.00	1.57	.16	.24	25 x 40	18	108	
T1E-1022*	1 x 2¼	1.00	2.36	.16	.24	25 x 60	24	144	
T1E-1030*	1 x 3	1.00	3.15	.16	.24	25 x 80	24	144	
T1E-1040*	1 x 4	1.00	3.94	.16	.24	25 x 100	8	48	
T1E-1515*	1½ x 1½	1.57	1.57	.16	.24	40 x 40	20	120	
T1E-1522*	1½ x 2¼	1.57	2.36	.16	.24	40 x 60	18	108	
T1E-1530*	1½ x 3	1.57	3.15	.16	.24	40 x 80	16	96	
T1E-1540*	1½ x 4	1.57	3.94	.16	.24	40 x 100	8	48	
T1E-2215G	2¼ x 1½	2.36	1.57	.16	.24	60 x 40	12	72	
T1E-2222*	2¼ x 2¼	2.36	2.36	.16	.24	60 x 60	12	72	
T1E-2230*	2¼ x 3	2.36	3.15	.16	.24	60 x 80	12	72	
T1E-2240*	2¼ x 4	2.36	3.94	.16	.24	60 x 100	4	24	
T1E-3015G	3 x 1½	3.15	1.57	.16	.24	80 x 40	12	72	
T1E-3022*	3 x 2¼	3.15	2.36	.16	.24	80 x 60	12	72	
T1E-3030*	3 x 3	3.15	3.15	.16	.24	80 x 80	12	72	
T1E-3040*	3 x 4	3.15	3.94	.16	.24	80 x 100	4	24	
T1E-4015G	4 x 1½	3.94	1.57	.16	.24	100 x 40	8	48	
T1E-4022G	4 x 2¼	3.94	2.36	.16	.24	100 x 60	8	48	
T1E-4030*	4 x 3	3.94	3.15	.16	.24	100 x 80	8	48	
T1E-4040*	4 x 4	3.94	3.94	.16	.24	100 x 100	4	24	



Example: T1E-1015 G = 1"x1½" light GREY duct with cover

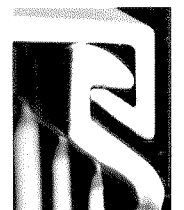
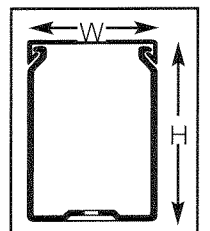
Available in 1 meter length  
contact sales office

(1) Each standard length is actually 6'6 3/4"  
but is counted as 6 feet for packaging and pricing

\* Color - add suffix "G" for light GREY "W" for WHITE

ADHESIVE BACKING - add suffix "A" to catalog number -  
contact sales office for pricing (see page 22)

All wiring ducts come  
complete with cover.  
Wiring duct covers can  
be sold separately;  
see page 8 and  
IBOCO Corp. Price List.



Non-slip cover  
design of minimum  
encumbrance and  
maximum grip.

Restricted slot  
opening for  
wire  
retaining.

Two predetermined  
breaklines:  
- for breaking off and  
removal of sidewall  
finger segments only.  
- for removal of sidewall  
finger and base segments.

Burr-free edges.

Recess boss for rapid  
mounting  
of components.

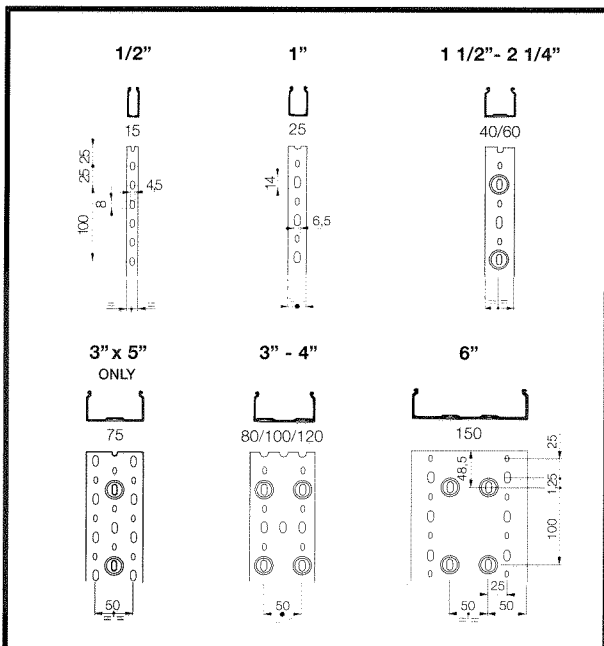
For wire fill capacity and base perforation of the wiring duct, see page 18.

# Wire Fill Capacity T1/T1-E/T1H/T1EH

## T1/T1-E

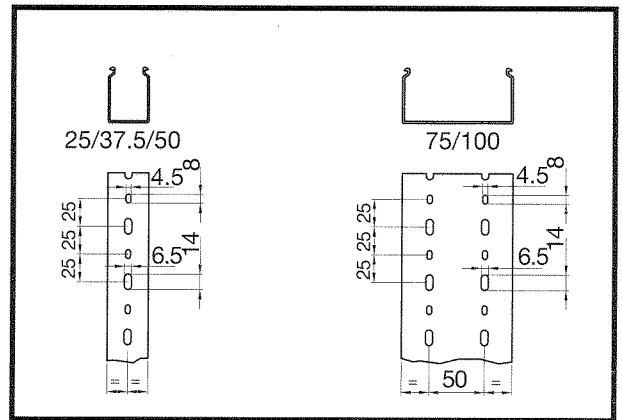
Nominal Duct Size	INSULATION THICKNESS					
	12 AWG		14 AWG		16 AWG	
	1/32 OD-158	3/64 OD-165	1/32 OD-139	1/32 OD-125	1/32 OD-113	1/64 OD-065
1/2 x 5/8	7	6	9	11	14	43
1/2 x 1	12	11	16	20	24	74
1/2 x 2 1/4	25	23	33	40	50	150
1 x 1	22	21	29	36	44	134
1 x 1 1/2	31	28	39	48	59	180
1 x 2 1/4	45	40	57	71	85	261
1 x 3	59	53	75	92	113	341
1 x 4	72	66	93	115	141	426
1 1/2 x 1 1/2	51	46	65	81	99	299
1 1/2 x 2 1/4	77	70	98	121	148	449
1 1/2 x 3	102	92	130	160	196	593
1 1/2 x 4	125	113	159	197	241	729
2 1/4 x 1 1/2	78	70	99	123	150	453
2 1/4 x 2 1/4	114	103	146	180	221	667
2 1/4 x 3	156	141	199	246	302	912
2 1/4 x 4	194	176	247	306	375	1132
3 x 1 1/2	105	95	134	165	203	612
3 x 2 1/4	159	144	203	251	307	928
3 x 3	214	193	272	337	412	1246
3 x 4	267	242	341	421	515	1558
3 x 5	309	283	399	493	604	1826
4 x 1 1/2	132	120	169	208	255	771
4 x 2 1/4	201	182	256	316	387	1171
4 x 3	270	244	344	425	520	1573
4 x 4	336	305	429	531	650	1963
4 x 5	415	381	536	663	812	2455
6 x 4	512	464	653	807	988	2987

Recommended Maximum Number of Wires To Be Used per Wiring Duct (MTW)  
BASED ON 60% FILL CAPACITY



## T1H/T1EH

Nominal Duct Size	INSULATION THICKNESS					
	12 AWG		14 AWG		16 AWG	
	1/32 OD-158	3/64 OD-165	1/32 OD-139	1/32 OD-125	1/32 OD-113	1/64 OD-065
1 x 1 1/2	34	32	45	56	68	206
1 x 2	46	43	60	74	91	275
1 x 3	69	64	90	111	136	412
1 1/2 x 1 1/2	52	48	68	84	102	310
1 1/2 x 2	69	64	90	111	136	412
1 1/2 x 3	104	96	135	167	205	619
2 x 2	93	85	120	149	182	550
2 x 3	139	128	180	223	273	826
2 x 4	186	171	241	298	364	1101
3 x 2	139	128	180	223	273	826
3 x 3	209	192	271	335	409	1238
3 x 4	279	256	361	446	546	1651
4 x 2	186	171	241	298	364	1101
4 x 3	279	256	361	446	546	1651
4 x 4	372	342	481	595	728	2202



Duct-System Base Perforation According to DIN 43659 and to DIN VDE 0660 TEIL 506

The base perforation of the wiring duct series T1, T1E, T1H and T1EH allows mounting on the panel with DUCTFIX R6 or R4.

The recess bosses in the base of duct series T1, T1E permit rapid mounting of components CL, ZP2 and SEP-E inside the wiring duct.

All dimensions shown are in millimeters. For conversion to inches see below.  
(25.4 millimeters = 1 inch)

millimeters	=	Inches	millimeters	=	Inches
4.5		.177	50		1.969
6.5		.256	60		2.363
8		.315	80		3.150
14		.551	100		3.937
15		.591			
25		.984			
40		1.575			