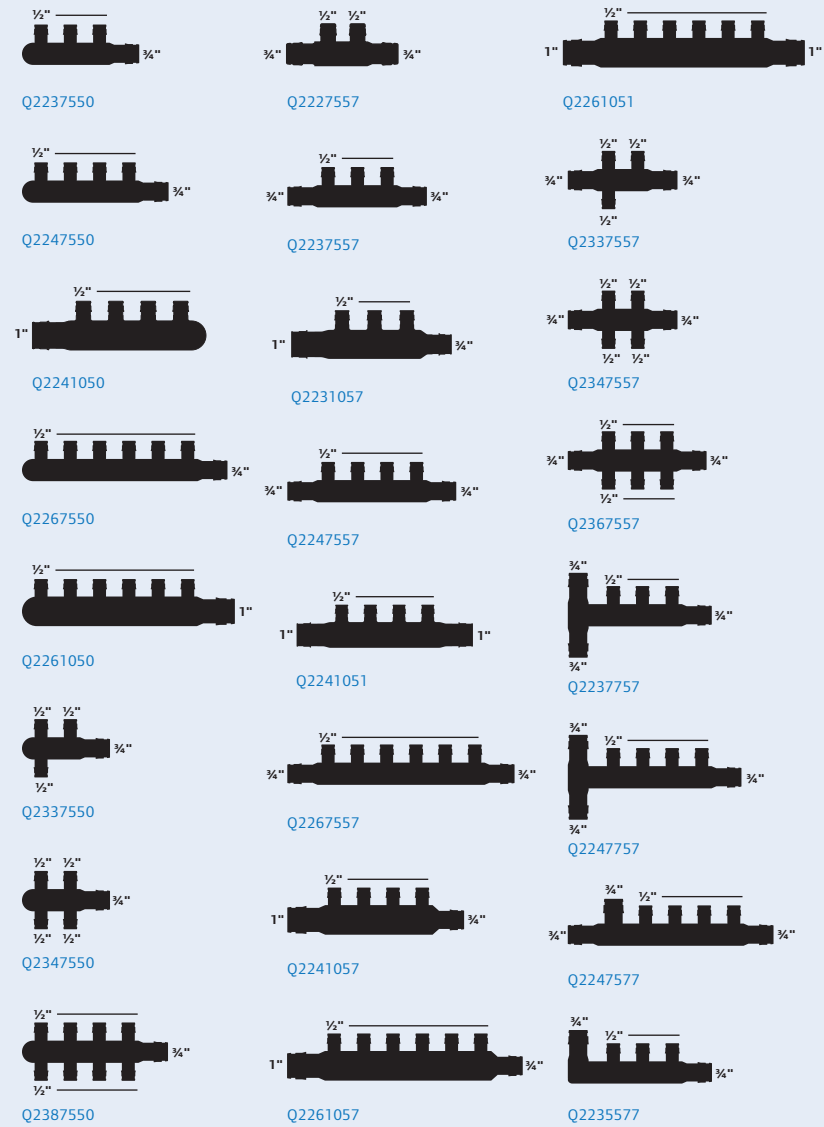




Uponor Logic Plumbing System is built on a complete range of system components that create a flexible, lead-free plumbing solution.

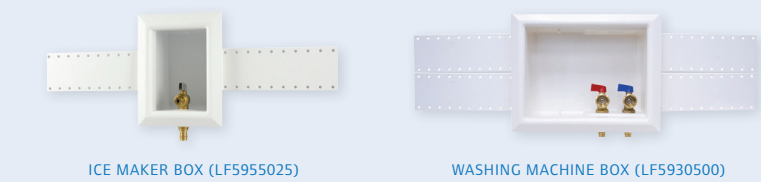
ProPEX EP Multi-port Tees



ProPEX Lead-free Brass Transition Fittings



Outlet Boxes



ProPEX Out-of-the-Wall Support System



Visit www.uponorpro.com or see the Uponor Product Catalog for our complete product line.

Homerun Plumbing

- Minimal connections
- Inefficient use of tubing
- No conservative-use hot water delivery benefit
- 1,515' Pipe
- 48 connections
- 10 fittings

Trunk-and-branch Plumbing

- Many connections
- Higher potential for leaks
- Dry-fit concerns
- 540' Pipe (copper, CPVC, PEX)
- 165 connections
- 96 fittings

THE OPTIMAL DESIGN APPROACH

- 83% FEWER FITTINGS
- 58% LESS TUBING

FITTING AND TUBING USAGE COMPARISON

UPONOR LOGIC TUBING: 637'	UPONOR LOGIC TUBING: 1,515'
UPONOR LOGIC FITTINGS: 16	TRUNK-AND-BRANCH FITTINGS: 96

FEATURES & BENEFITS

- Efficient use of time and materials
- No glues, torches or gauges necessary
- Fewer connections, flexible for tight bend radius
- Able to install in rain and high-humidity conditions
- Visual connection, no dry-fit concerns
- Fast hot-water delivery potential
- Complete lead-free offering
- Full line of Multi-port Tees for ultimate design flexibility

UPONOR LOGIC PLUMBING SYSTEM

vs. Conventional Plumbing Systems

Field Support

Uponor offers an extensive network of highly skilled technical field representatives who are available for jobsite training and support. Their guidance will allow your team to get off to a fast start and ensure you are embracing the latest and best practices installation techniques.

Technical Support

Uponor maintains a full-service design department to help you negotiate the complexities of modern construction techniques and code requirements. We'll assist you to create custom installation plans for your project that ensure the most efficient use of materials and maximize system performance.

Call 888.594.7726 or e-mail design.services@uponor.com to discuss your next project.

PlumbingGuideMap_P738_0713_Copyright © 2013 Uponor. Printed in the United States

Uponor
5925 148th Street West
Apple Valley, MN 55124 USA
Tel: 800.321.4739
Fax: 952.891.2008
www.uponorpro.com



Planning Map for
the Plumbing Trade
Professional



UPONOR LOGIC PLUMBING SYSTEM

Labels in image: PROPEX OUT-OF-THE-WALL SUPPORT SYSTEM, MULTI-PORT EP TEE, UPONOR AQUAPEX TUBING, PROPEX CONNECTION

The Uponor Logic Plumbing System is an organized arrangement of AquaPEX® tubing, Multi-port Tees, ProPEX® fittings and Out-of-the-Wall systems offering rapid hot water delivery with superior flow characteristics for the homeowner.

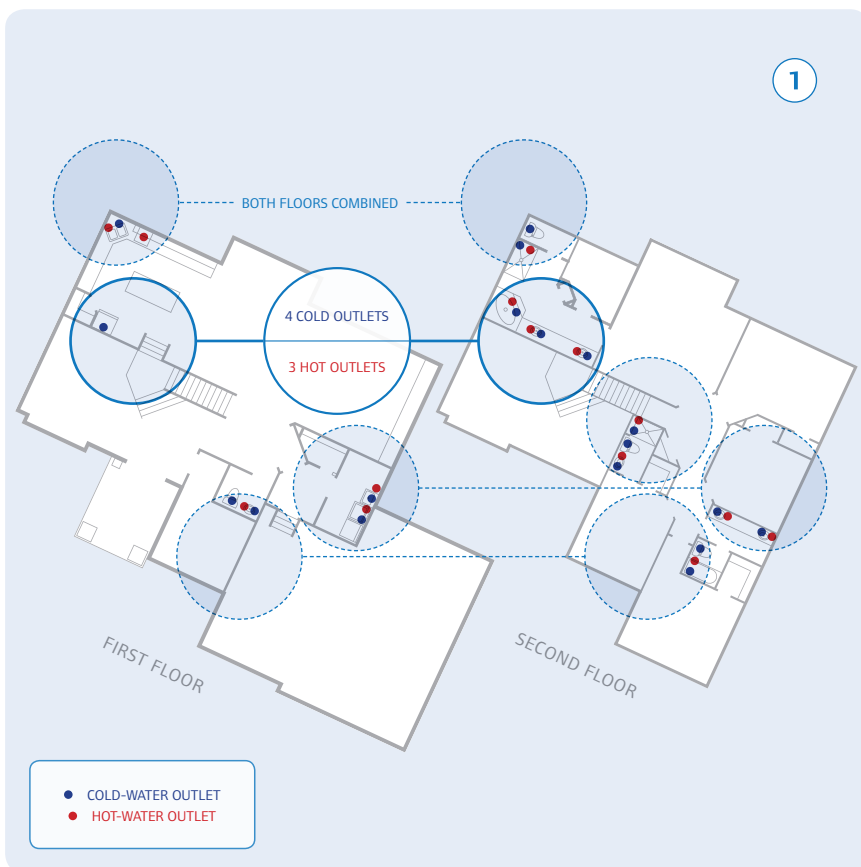
For you the installer, Uponor Logic equates to minimizing fittings and connections by way of remote Multi-port Tees, creating a water distribution system that is more efficient to install, reducing your liability and increasing your profitability.

PLUMBING FOR THE TRADE PROFESSIONAL

Two-story Home

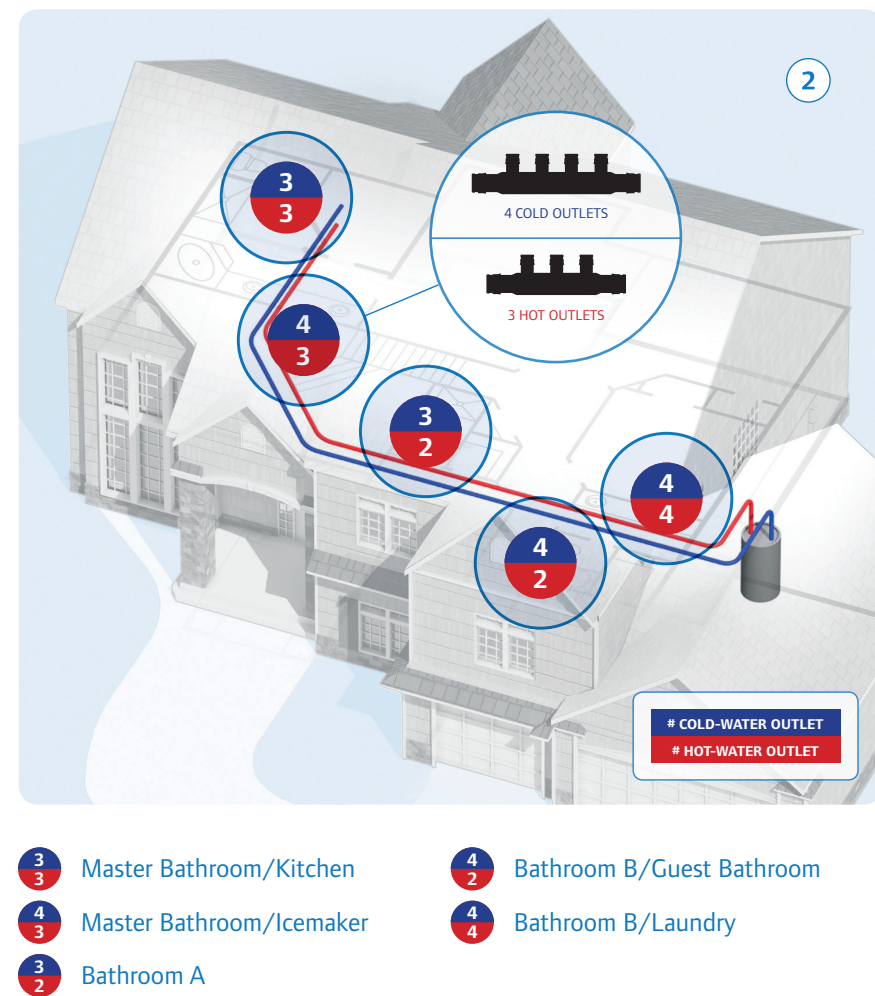
PLANNING EXAMPLE

- Identify location of all plumbing outlets.
- Identify fixture groupings within approximately 10' radius on both floors.

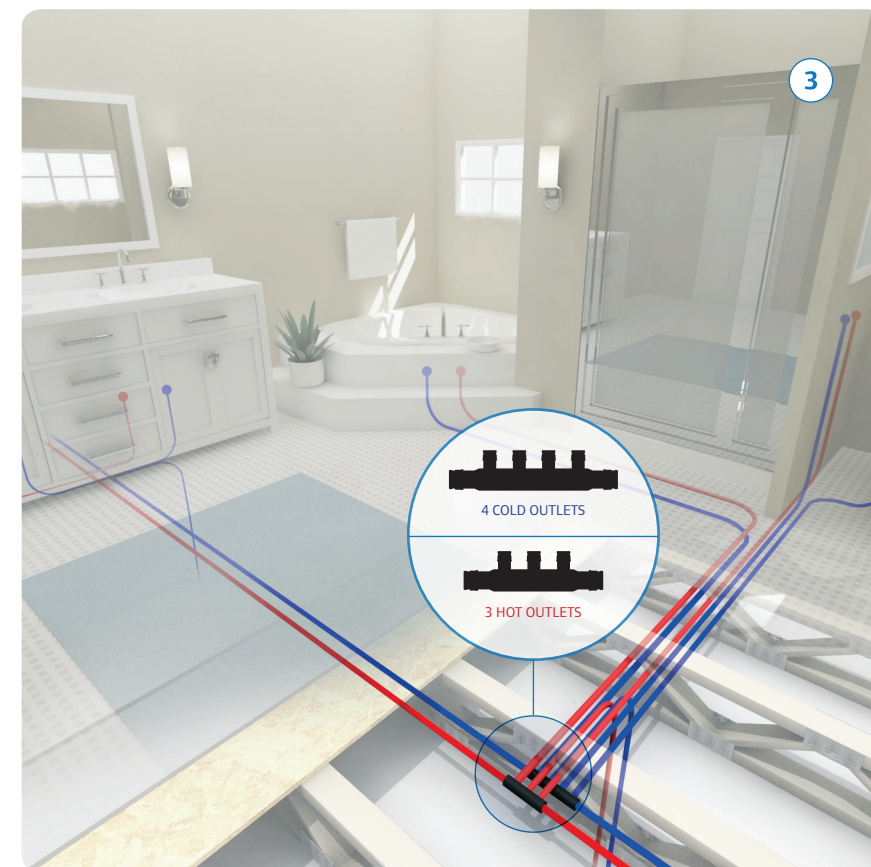


Planning for Uponor Logic is a simple, three-step process.

- Plan path through the house to connect fixture groupings.
- Identify number of hot and cold outlets for each grouping.

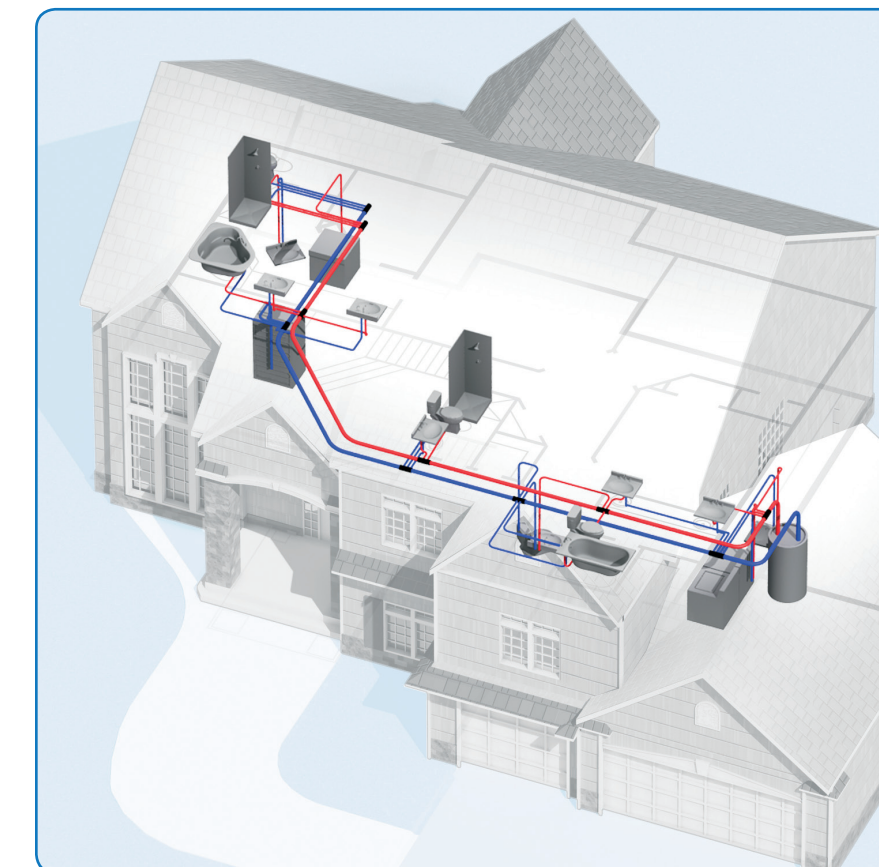


- Identify appropriate location of Multi-port Tee for each grouping.
- Select appropriate Multi-port Tee and fittings.



TOTAL COMPONENTS FOR PROJECT:

Q2227557 (2)	Q2247557 (4)
Q2237557 (2)	Q2237550 (2)



Making a ProPEX Fitting



- Slide the ProPEX Ring with Stop over the end of the tubing.



- Use an expander tool (battery or manual) to enlarge the tubing and ring. If using expander tools other than Milwaukee, be sure to rotate the head one-eighth turn after each expansion. Full expansions are necessary to make a proper connection.



- Place the fitting in the expanded tubing and ring. Good connections result when the ProPEX Ring rests snugly against the ProPEX fitting shoulder.

For complete details, refer to the ProPEX Connections Instructional Guide on www.uponorpro.com.

Best Practices

- When making a connection in a confined space, allow enough tubing drop from the cavity so that you have ample room to make a connection. After the connection is made, simply feed the extra tubing back into the cavity and secure properly.
- If the Multi-port Tee you select has extra unused ports, simply stub a 3" to 4" tube on the port and cap with a ProPEX EP Plug. Save port for future expansion needs.
- Secure main-line runs every 32" with tube talons to joists to ensure a clean and professional installation.

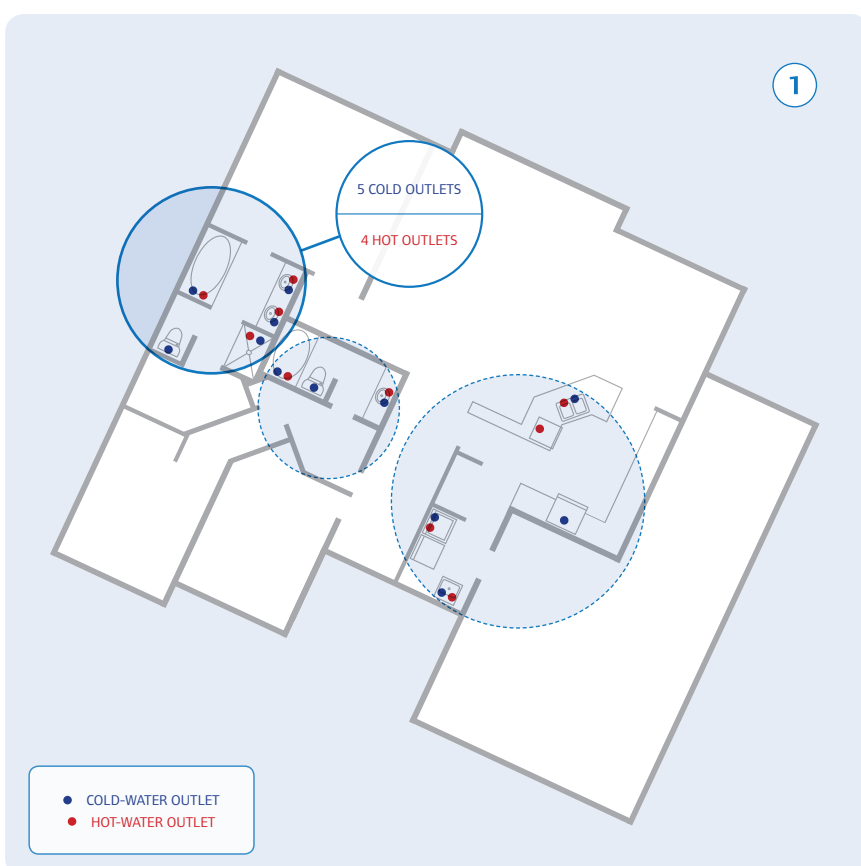
JOBBSITE CHECKLIST

- 1/2", 3/4" and 1" Uponor AquaPEX tubing
- Uponor PEX Tubing Cutter
- Expander tool (manual or battery)
- Tube talons and strapping materials
- ProPEX Out-of-the-Wall Support System (ProPEX Escutcheons, straps, bend supports, stop and in-line valves)

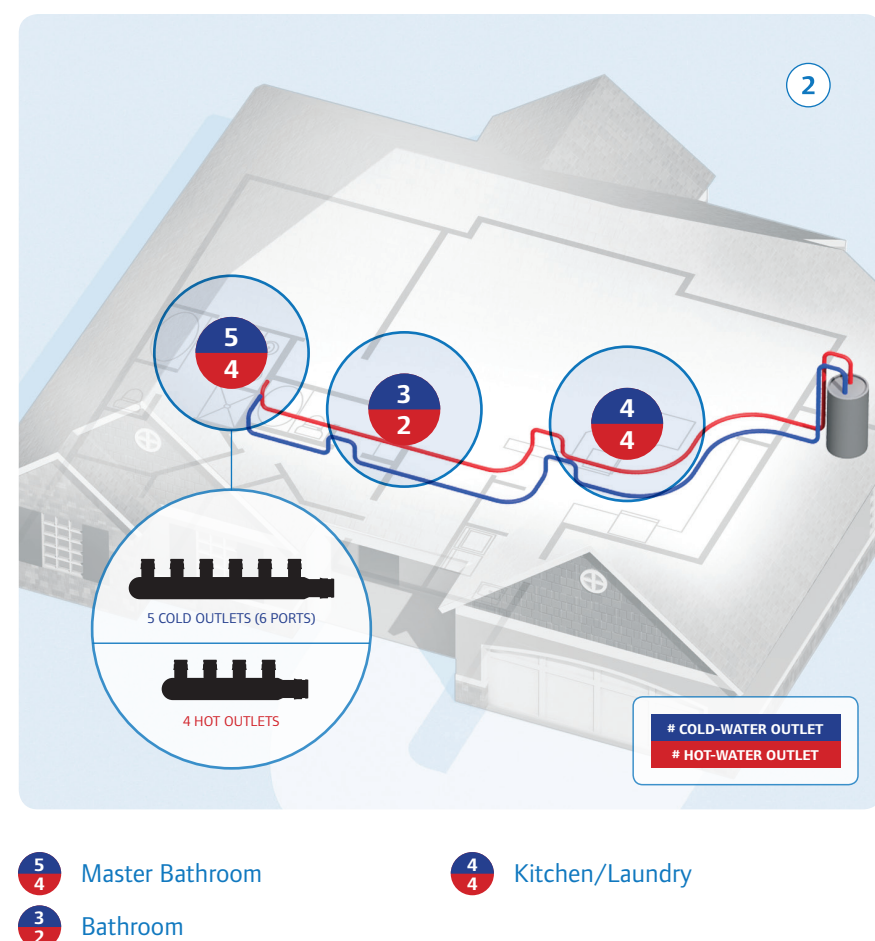
Slab-on-grade

PLANNING EXAMPLE

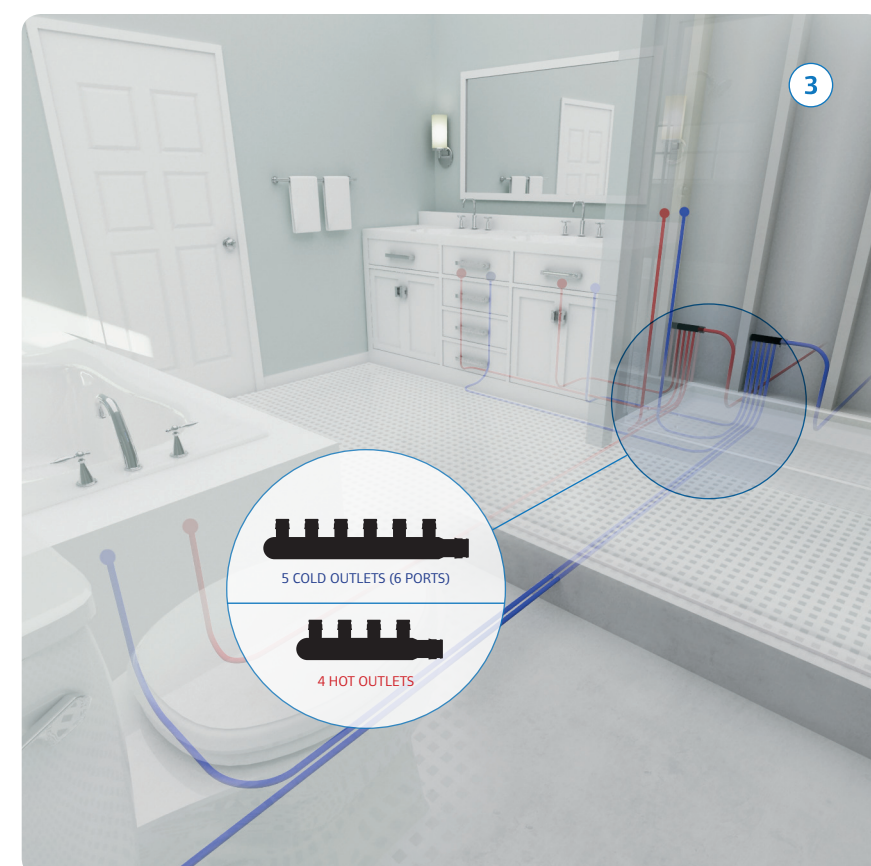
- Identify location of all plumbing outlets.
- Identify fixture groupings within an approximate 10' radius.



- Plan path through the house to connect fixture groupings.
- Identify number of outlets for each grouping.



- Identify appropriate location of Multi-port Tee for each grouping.
- Select appropriate Multi-port Tee and fittings.



TOTAL COMPONENTS FOR PROJECT:

Q2227557 (1)	Q2247550 (1)
Q2237557 (1)	Q2267550 (1)
Q2247557 (2)	

