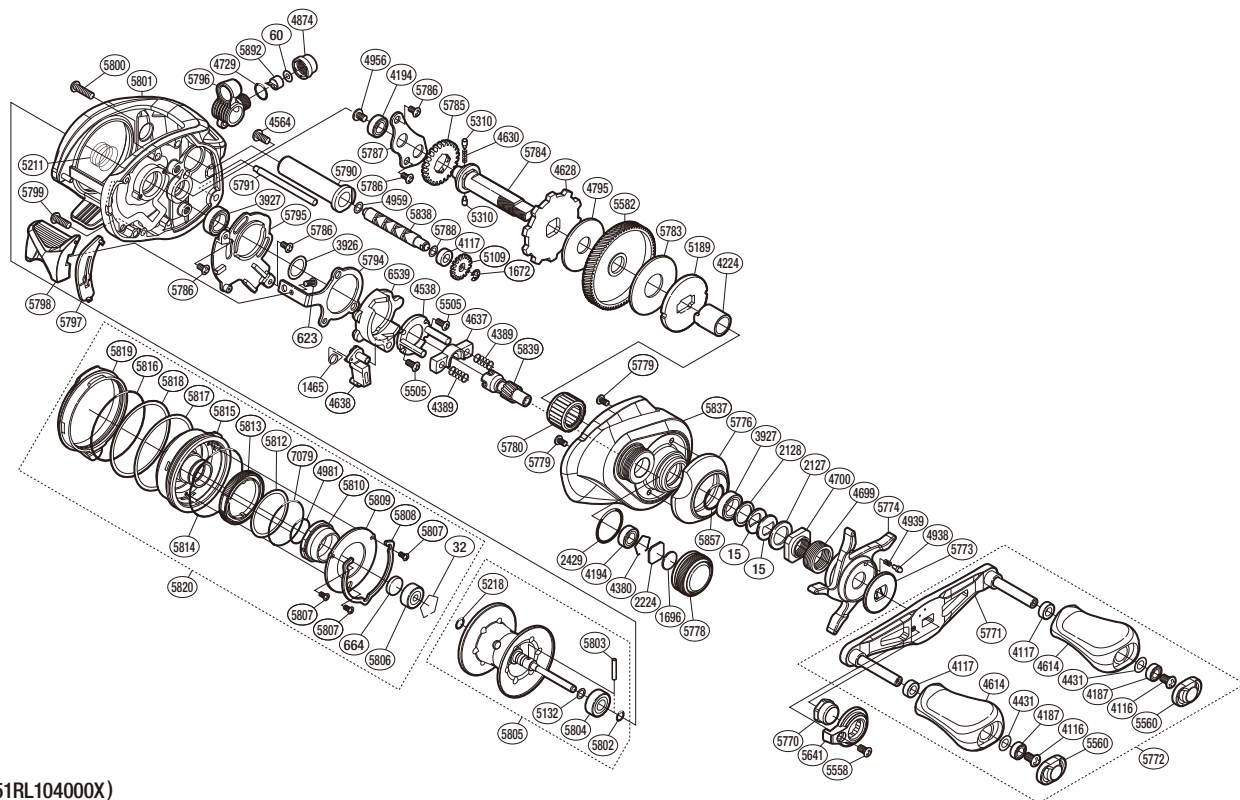


# SHIMANO

## Bantam

### MGL

## BTM MGL-HGR



(51RL104000X)

#	Part No.	Description	#	Part No.	Description	#	Part No.	Description
0015	10D60	Drag Spring Washer	4938	10B27	Click Pin	5795	1001J	Clutch Guard
0032	10GEW	Bearing Retainer	4939	10988	Click Spring	5796	100QL	Line Guide Pawl Holder Assembly
0060	10CFW	Spacer	4956	10PVT	Screw	5797	1000Z	Clutch Bar Guide B
0623	103C0	Screw	4959	10GFJ	Washer	5798	10TT2	Clutch Lever Assembly
0664	1057S	Spacer B	4981	10LA8	O Ring	5799	101GQ	Screw
1465	10N1Z	Clutch Pawl Spring	5109	10FNX	Idle Gear	5800	103LN	Screw
1672	105NC	E Lock	5132	10GN1	Washer	5801	100Q8	Frame Assembly
1696	10896	Cast Control Spacer	5189	10D3J	Pressure Plate	5802	10TNF	O Ring
2127	10J1N	Star Drag Spacer	5211	10EZE	Bearing Pressure Spring	5803	10MD0	Spool Clutch Pin
2128	105PW	Bearing Washer	5218	10EZ7	O Ring	5804	1005D	Ball Bearing
2224	1085F	Spool Tension Spacer	5310	10HJG	Idle Gear Pin	5805	10TB0	Spool Assembly (With Bearing)
2429	108WK	O Ring	5505	10LVJ	Screw	5806	10S37	Ball Bearing
3926	10G8C	Washer	5558	10R1Q	Screw	5807	1026U	Screw
3927	10EX8	Ball Bearing	5560	10FMM	Handle Knob Seal	5808	10TUC	Cam Lever Retainer
4116	103E9	Screw	5582	1021G	Drive Gear	5809	10TUB	Br Dial Retainer Plate
4117	10PXY	Bushing	5641	10SSK	Handle Nut Plate	5810	10TB6	Brake Pipe Gear Assembly
4187	104VX	Ball Bearing	5770	1007H	Handle Nut	5812	1006Q	Washer
4194	105BP	Ball Bearing	5771	10TB7	Handle Shank Assembly	5813	1000Y	Br Dial
4224	10BN3	Roller Clutch Inner Tube	5772	10TTN	Handle Assembly	5814	108WZ	O Ring
4380	1057X	Retainer	5773	1007F	Star Drag Click Plate	5815	10TB8	Brake Case Assembly
4389	104BU	Yoke Spring	5774	1006Y	Star Drag	5816	1006P	O Ring
4431	10G8G	Washer	5776	1001K	Clutch Button Attachment	5817	10073	Washer
4538	10F42	Clutch Cam Retainer	5778	10060	Cast Control Cap	5818	10078	Washer
4564	10LZD	Screw	5779	1055D	Screw	5819	10013	Left Side Plate Cam Lever
4614	10329	Handle Knob	5780	1005E	Roller Clutch Bearing	5820	100KB	Left Side Plate Assembly
4628	10D6Y	Anti-Reverse Ratchet	5783	1027W	Drag Washer	5837	1005V	Right Side Plate
4630	10JDX	Idle Gear Spring	5784	10059	Drive Shaft	5838	1006R	Worm Shaft
4637	1046T	Yoke	5785	10057	Idle Gear	5839	1006A	Pinion Gear
4638	105ZU	Clutch Pawl	5786	10MT4	Screw	5857	1027V	O Ring
4699	10A71	Star Drag Spring	5787	1005S	Drive Shaft Retainer	5892	10211	Line Guide Pawl
4700	10A0B	Star Drag Nut	5788	10R3Z	Washer	6539	10SX6	Clutch Cam
4729	108WQ	O Ring	5790	1005Z	Level Wind Guard	7079	10CG0	O Ring
4795	10CJ1	Drag Washer	5791	1006J	Level Wind Guide			
4874	10FJB	Pawl Cap	5794	10067	Clutch Plate	4692	10LQ0	B-100 Oil (Accessory)

Please note that the number of adjusting washers may not be the same as shown in the exploded views. (Adjustment will vary with each individual product.)

(240329)\_011