

## OVERVIEW

The nLight nPP20 PL power pack extends the power pack family, delivering robust system performance and design versatility for commercial and industrial control applications. The nPP20 PL is capable of switching loads up to 20 Amps for general purpose receptacle load via an internal latching relay designed with robust protection. This power pack also has two available options – the base unit powers off of line voltage, but does not provide nLight bus power. An option is available for a unit that provides bus power – this option (BP) provides up to 40mA from each of its two RJ-45 ports by transforming Class 1 line voltage (120 VAC) to Class 2 low voltage (15 VDC). This power is typically utilized by other nLight devices within the power pack's local control zone; however, remaining power is also made available over the network for Bridges and devices in other zones to utilize. Simply add this device into an nLight control zone with an occupancy sensor and the unit will automatically switch off when the room becomes vacant. Local manual switch and photocell control of receptacles is not typically required, therefore it is disabled by default.

The nPP20 PL's two RJ-45 connectors make control wiring with standard CAT5e cabling easy and clean. For simplifying installation, the nPP20 PL is designed with an elongated chase nipple that allows them to be attached directly through a ½" knockout into a junction box.

## FEATURES

- Communicates w/ nLight Network
- Self-Contained Relay Switches Line Voltage Load
- BP Option Supplies 40mA of Bus Power / RJ-45 port
- Remotely Configurable/Upgradeable
- Push-Button Programmable
- Configurable Relay Logic
- Extended Chase Nipple

### Buy American Act

Product with the BAA option is assembled in the USA and meets the Buy America(n) government procurement requirements under FAR, DFARS and DOT regulations. Please refer to [www.acuitybrands.com/buy-american](http://www.acuitybrands.com/buy-american) for additional information.

### Warranty

Five-year limited warranty. This is the only warranty provided and no other statements in this specification sheet create any warranty of any kind. All other express and implied warranties are disclaimed. Complete warranty terms located at: [www.acuitybrands.com/support/warranty/terms-and-conditions](http://www.acuitybrands.com/support/warranty/terms-and-conditions)

**Note:** Actual performance may differ as a result of end-user environment and application. Specifications subject to change without notice.



## nPP20 PL

### Plug Load Control Power Pack



### A+ Capable

This item is an A+ capable component, which has been designed and tested to provide out-of-the-box luminaire compatibility with simple commissioning, when included as part of an A+ Certified™ Solution.

To learn more about A+, visit [www.acuitybrands.com/aplus](http://www.acuitybrands.com/aplus).



Items marked by a shaded background qualify for the Design Select program and ship in 15 days or less. To learn more about Design Select, visit [www.acuitybrands.com/designselect](http://www.acuitybrands.com/designselect).

\*See ordering tree for details



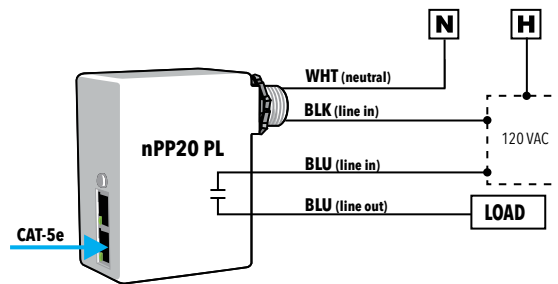
ORDERING INFORMATION

nPP20 PL		Example: nPP20 PL BP	
Series	Options	Temp / Humidity	Buy America(n) <sup>1</sup>
nPP20 PL Plug Load Control Power Pack	[blank] Self-powers only BP Provides nLight bus power	[blank] Standard LT Low Temp	[blank] Standard BAA Buy America(n) Act Compliant

**Notes:**  
1. Not available with LT

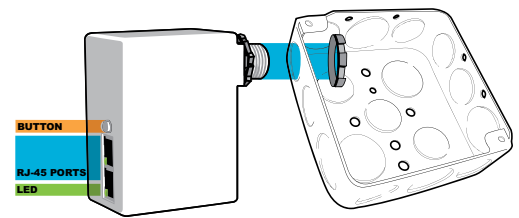
WIRING (DO NOT WIRE HOT)

T568B pin/pair assignment is recommended for all CAT-5e cables. For Supply Connections, use 14 AWG/90°C, 12 AWG/75°C or larger.



GENERAL INSTALLATION INSTRUCTIONS

- Mount through a 1/2" knockout in any junction box or luminaire. Secure with lock nut.
- Following above wiring diagram, connect wires to line voltage feed(s), neutral(s), and load.
- Interconnect unit (via RJ-45 ports) with other nLight devices in lighting zone using CAT-5e cables.
- Test all wiring for shorts prior to powering up the unit from the circuit breaker, and ensure that there are no loose or exposed wires that could short to other wires or components. Once wiring is confirmed, power up the unit from the circuit breaker.
- Once power is received via CAT-5e connection, all devices in zone will automatically begin functioning together according to each device's defaults.



## SPECIFICATIONS

---

### Electrical

**Input Ratings** 120VAC, 50/60 Hz

**Output Ratings** 120VAC, 50/60 Hz, 20A - General Purpose

**Relay Type** Latching

**Low Voltage Output Ratings** Self-powering, does not supply nLight bus voltage (Base version)  
15VDC, 40mA per RJ-45 Port (80mA total) (BP Option)

**Standards/ Ratings** Energy Management Equipment, UL916 (E167435)

---

### Mechanical

**Dimensions** 3.38"H x 2.53"W x 1.83"D (86mm x 64mm x 47mm) - does not include 1/2" chase nipple

**Mounting** 1/2" Knockout (7/8" hole)

**Color** Blue

**Connection Type** RJ-45 nLight Network Ports (2)  
Line Voltage Leads

---

### Environmental

**Warrantied Operating Temperature** 14°F to 122°F (-10°C to 50°C)  
14°F to 113°F (-10°C to 45°C) if enclosed within a junction box

**Relative Humidity** Up to 90%, Non-Condensing

**Standards/ Ratings** RoHS, Plenum UL2043

---

### General

**Standards/ Ratings** System Component to aid in compliance with Title 24, ASHRAE 90.1, IECC