

Sentinel Mark II® Pressure Balance Diverter Valve ADA Shower Combination

FEATURES:

- Versatile shower system includes Sentinel Mark II® concealed anti-scald balanced pressure valve with integral volume control and integral stops and hand held spray combination.
- Chrome plated brass wall plate with metal index.
- Chrome plated brass lever handle.
- Independent center sleeve allows up to 1 in. of rough-in variation. Adjustable temperature limit stop. Brass valve body.
- Pressure balancing and ceramic temperature regulating cartridge with built-in check valves.
- Can be installed back-to-back.
- Roughing-in template included.
- Four port valve with ½ in. NPT Male (1/2 in. copper sweat) inlets and outlets.
- Swivel arm holder.
- S-2500 shower arm and wall flange.
- 60 in. metal hose, chrome finish. In-line vacuum breaker.
- 24 in. combination slide bar and grab bar, stainless steel and chrome, with mounting screws.
- VS-100-PC handshower with flow control device reduces flow to 2.5 gpm (9.46 L/min)
- Furnished with ½ pipe cap.



STOCK FINISH:



PC

STANDARDS:

- ASSE 1016 certified (shower valve)
- ASME 112.18.1/CSA B125.1 certified (shower valve)
- ADA Compliant

WARRANTY:

Visit www.speakman.com for full product warranty information

- See Speakman.com for warranty information

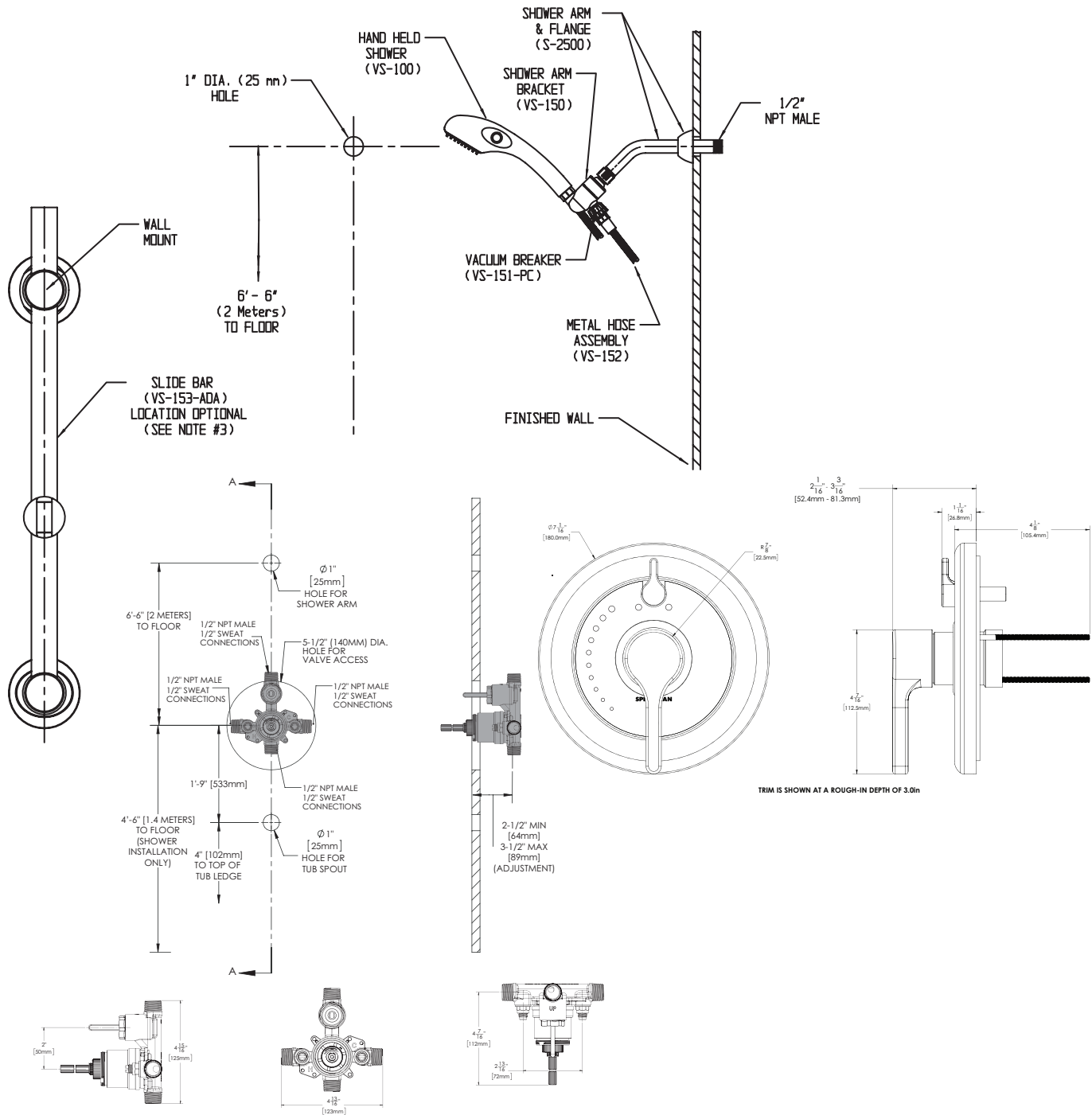
Information continues on next page

NOTE: 1. All dimensions are in inches (millimeters) unless otherwise specified and are subject to change without notice. 2. Unless otherwise specified, all inlets and outlets are 1/2" female copper sweat. 3. For ADA mounting locations, consult ADAAG, ANSI A117.1, or static regulations

Architect/Engineer Approval Space:

P: 800-537-2107
F: 800-977-2747
W: WWW.SPEAKMAN.COM
R: 01-SEPTEMBER 2021

Sentinel Mark II® Pressure Balance Diverter Valve ADA Shower Combination



NOTE: 1. All dimensions are in inches (millimeters) unless otherwise specified and are subject to change without notice. 2. Unless otherwise specified, all inlets and outlets are 1/2" female copper sweat. 3. For ADA mounting locations, consult ADAAG, ANSI A117.1, or static regulations

Architect/Engineer Approval Space:

P: 800-537-2107
F: 800-977-2747
W: WWW.SPEAKMAN.COM
R: 01-SEPTEMBER 2021