

NOTES: UNLESS OTHERWISE SPECIFIED
 1. FOR GENERAL SERIES SPECIFICATIONS, SEE SD10-0000.

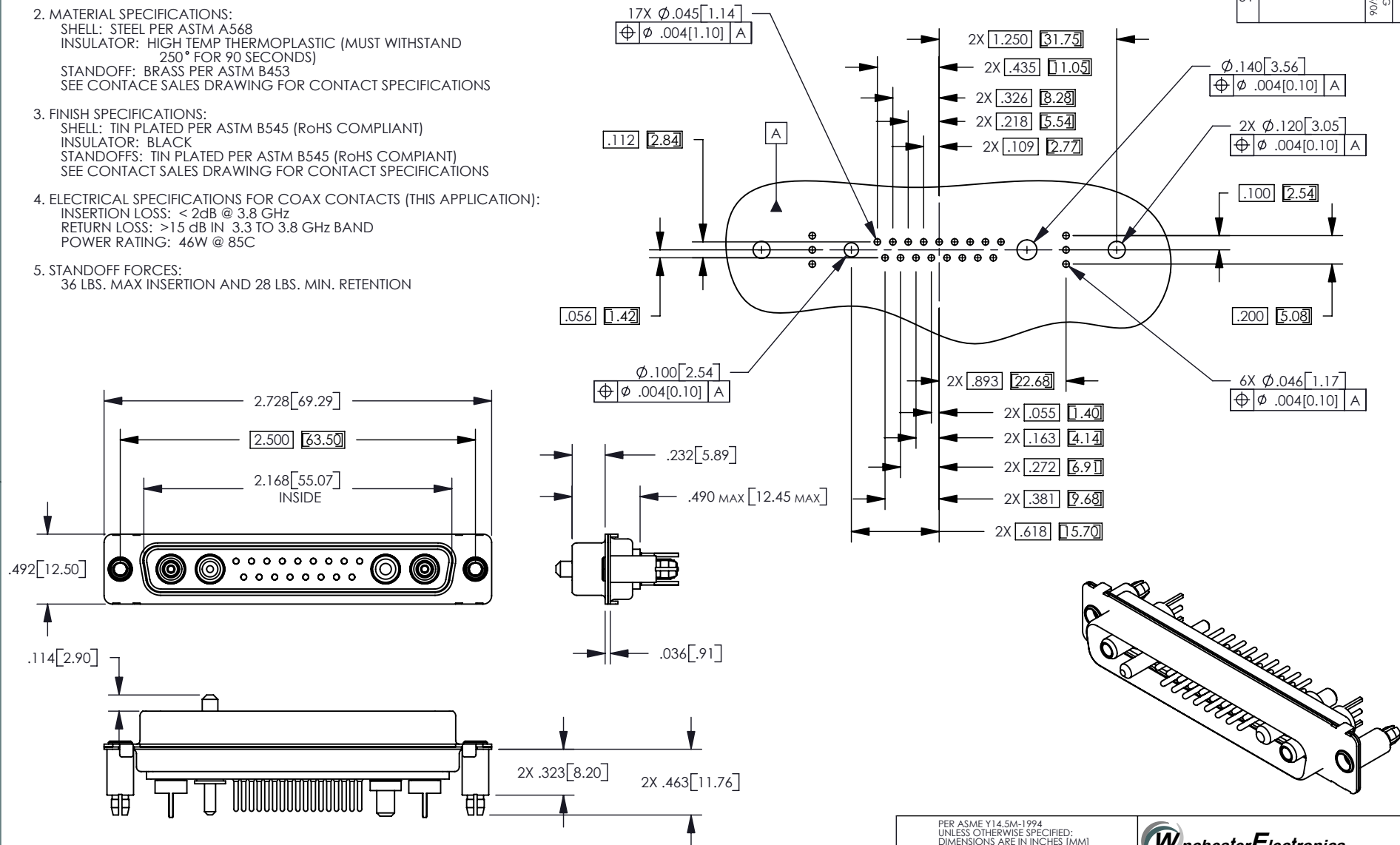
2. MATERIAL SPECIFICATIONS:
 SHELL: STEEL PER ASTM A568
 INSULATOR: HIGH TEMP THERMOPLASTIC (MUST WITHSTAND
 250° FOR 90 SECONDS)
 STANDOFF: BRASS PER ASTM B453
 SEE CONTACT SALES DRAWING FOR CONTACT SPECIFICATIONS

3. FINISH SPECIFICATIONS:
 SHELL: TIN PLATED PER ASTM B545 (RoHS COMPLIANT)
 INSULATOR: BLACK
 STANDOFFS: TIN PLATED PER ASTM B545 (RoHS COMPLIANT)
 SEE CONTACT SALES DRAWING FOR CONTACT SPECIFICATIONS

4. ELECTRICAL SPECIFICATIONS FOR COAX CONTACTS (THIS APPLICATION):
 INSERTION LOSS: < 2dB @ 3.8 GHz
 RETURN LOSS: > 15 dB IN 3.3 TO 3.8 GHz BAND
 POWER RATING: 46W @ 85C

5. STANDOFF FORCES:
 36 LBS. MAX INSERTION AND 28 LBS. MIN. RETENTION

REV	DESCRIPTION	BY DATE	APPD
01	ER1216	RDG 08/25/06	XXX



CATALOG P/N: RM21WA4P-1021

PER ASME Y14.5M-1994 UNLESS OTHERWISE SPECIFIED: DIMENSIONS ARE IN INCHES [MM] TOLERANCES: DECIMAL: .XX [X.X] ± .01 [0.3] .XXX [X.XX] ± .005 [0.13] .XXXX [X.XXX] ± .XXXX ANGLES: ± 2° SCALE: 1:1				 Winchester Electronics Corporation 62 Barnes Industrial Road North Wallingford, Connecticut 06492	
CUSTOMER DRAWING				RM21WA4P-1021 (RoHS)	
DRAWN	DATE	APPROVED	DATE		
RDG	08/25/06	XXX	XX/XX/XX		
APPROVED	DATE	APPROVED	DATE		
XXX	XX/XX/XX	XXX	XX/XX/XX		
A				SDRM21WA4P-1021	SHT 1 OF 1
				REV	01