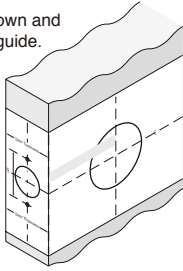


# Installation Instructions for Deadbolt

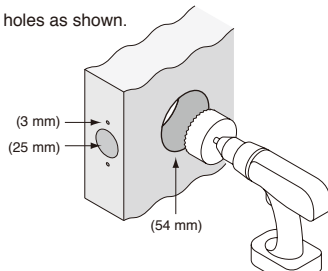
## Step 1.

- Mark the Door as shown and use the template as guide.



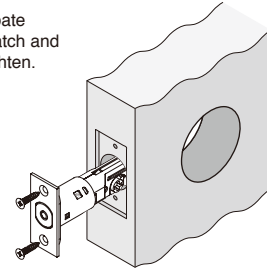
## Step 2.

- Drill the holes as shown.



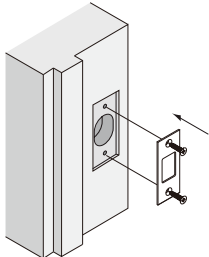
## Step 3.

- Prepare rebate
- Install the latch and screw to tighten.



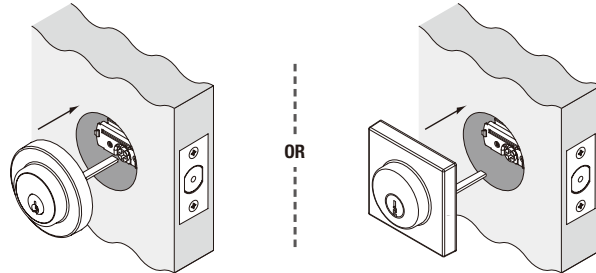
## Step 4.

- Prepare rebate
- Install the strike and screw to tighten.



## Step 5.

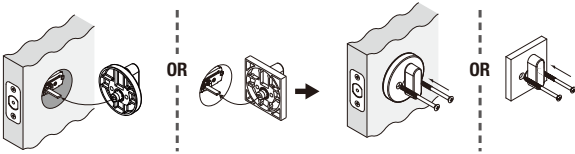
- Install the outside cylinder as shown.
- The drive tail is positioned horizontally.



## Step 6.

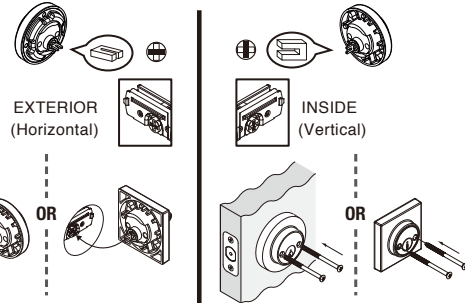
### Install Thumbturn

- For Single Cylinder functions, please install the thumbturn as per diagram.



### Install Cylinder

- For Double Cylinder functions, install the exterior and internal parts as shown in the diagram.



**NOTE:** Carefully follow these instructions when installing. Screws to be tightened to a recommended 2.5Nm torque.



FOLD HERE

Mark centre-line of latch hole

Mark centre-line of latch hole

Fit here on door edge

54mm hole

BACKSET 60mm (2 3/8")

BACKSET 70mm (2 3/4")

Fit here on door edge

**TRADEPRO**  
BY GAINSBOROUGH

Gainsborough Hardware Industries Limited,  
Melbourne, Australia. A.B.N. 25 004 792 269  
[www.gainsboroughhardware.com.au](http://www.gainsboroughhardware.com.au)

DGP-A00P12-00  
MAR '15

Installation template  
for deadbolt

