

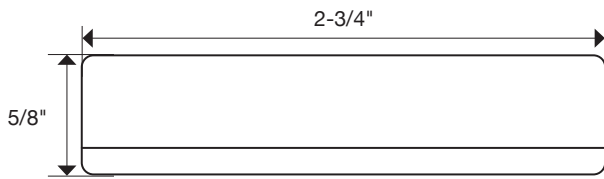
Dark Silver
fixture shown
L-PS-TDC-DS



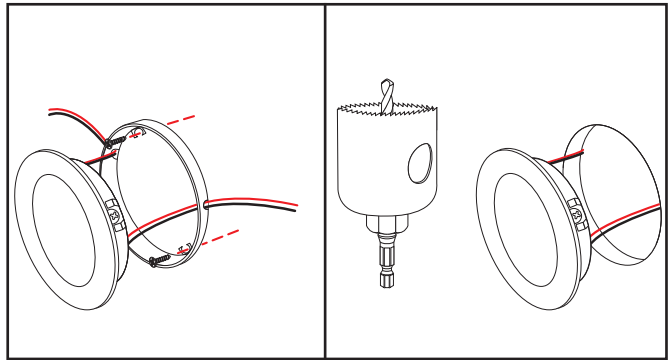
Front View



Back View



Fixture Cross-Section – Actual Size



Surface or recess mount

MEDIUM LIGHT OUTPUT – 2.4 WATTS PER FIXTURE

PART NUMBER	DESCRIPTION	DIMENSIONS	LUMENS PER FIXTURE	TOTAL WATTS PER FIXTURE
L-PS-TDC-Color	LED puck light for surface or recess mount, with multi-white color tunable LEDs featuring two wire TandemLED technology. Easier to wire quickly with screw terminal feature.	2-3/4" x 2-3/4" x 5/8"	190	2.4

Blue indicates customer choice. Color indicates Finish Color.

L-PS-TDC-BK (Example part number for TandemLED Series Puck Light in Black Housing finish)

INSTALLATION COMPONENTS

PART NUMBER	DESCRIPTION	OUTSIDE DIAMETER
T-CW20G-STR-25	25 ft. spool of 20/2 AWG stranded wire	9/64"
T-CW20G-STR-50	50 ft. spool of 20/2 AWG stranded wire	9/64"
T-CW20G-STR-100	100 ft. spool of 20/2 AWG stranded wire	9/64"
T-CW20G-STR-1	20/2 AWG stranded wire sold per foot	9/64"

FINISH OPTIONS





Puck Light TandemLED Series

Tunable Multi-White LED puck light



FEATURES

- Tunable multi-white light from Warm White to Daylight White and all temperatures in between
- Patent pending 2 wire TandemLED technology
- 21 diodes per fixture
- Includes 3 lenses: 38°, 88°, 120°
- Easy screw terminal feature for installation
- 90 CRI (Color Rendering Index – true color)
- Simple surface or recess mount installation
- 3-year limited warranty
- Designed for indoor application
- No UV or IR
- Dimmable (with compatible dimmer)
- 2-1/2" hole saw recommended for recess mount
- 30,000 hour LED life at 70% lumen maintenance
- 12 volt DC plug-in or hardwired power supply required (order separately)

APPLICATIONS

- Interior Cabinet
- Under Cabinet
- Display/Accent
- Over Sink
- Architectural Niche

TECHNICAL INFORMATION

Series	TandemLED™ Series
Input Voltage	12 volt DC
Color Temperature (Kelvin)	Warm white 2700K (27) Soft white 3000K (30) Cool white 4000K (40) Daylight white 5000K (50)
CRI (Color Rendering Index)	90+
LED Type	SMD3014
Lumens	190 lumens per fixture
Max Run	Refer to power supply specs
IP Rating	-----
Dimmable	5% – 100%
Rating	cULus Listed
Rated Life	30,000 hrs
LED Beam Angle	38°, 88°, 120°
LEDs Per Fixture	21
Mounting	Surface or Recess Mount
Recess Mount Hole	2-1/2" hole saw
Wiring	20/2 stranded
Operating Temperature	-13°F to 104°F (-25°C to 45°C)
Environment	Dry location
Construction Material	Aluminum
Warranty	3 years

COMPATIBLE POWER SUPPLIES

PART NUMBER	DESCRIPTION	DIMENSIONS
T-12W-12V-PI	12 watt AC/DC 2 prong plug-in, 12 volt DC 1 AMP.	2-15/16" x 1-3/16" x 1-13/16"
T-24W-12V-PI	24 watt AC/DC 2 prong plug-in, 12 volt DC 2 AMP.	3-11/16" x 1-7/8" x 1-5/16"
T-36W-12V-PI	36 watt AC/DC 2 prong plug-in, 12 volt DC 3 AMP	3-3/4" x 2" x 1-5/16"
T-60W-12V-PI	60 watt AC/DC 2 prong plug-in, 12 volt DC 5 AMP	5-1/8" x 2-1/16" x 1-1/4"
T-96W-12V-PI	96 watt AC/DC 3 prong plug-in, 12 volt DC 8 AMP.	5-1/2" x 2-3/8" x 1-3/8"
T-120W-12V-PI	120 watt AC/DC 3 prong plug-in, 12 volt DC 10 AMP	6-3/8" x 2-11/16" x 1-1/4"
T-60W-12-WP-HW	60 watt, 12 volt IP67 rated waterproof LED hardwired	6-1/2" x 1-5/8" x 1-1/4"
T-150W-12-WP-HW	150 watt, 12 volt IP67 rated waterproof LED hardwired.	7-3/8" x 2-3/8" x 1-1/2"
T-WAV-60W-PSR	60 watt AC/DC 2 prong plug-in, 12 volt DC 5 AMP with built in smart LED receiver	7-1/4" x 2-7/8" x 1-5/8"
T-320W-12V-HW	320 watt 12 volt indoor industrial hardwired	8-1/2" x 4-1/2" x 2"

COMPATIBLE DIMMING SYSTEMS / SWITCHES

PART NUMBER	DESCRIPTION	DIMENSIONS
T-T-1Z-WC-RF-Color	TandemLED™ 1-Zone LED controller. On / Off / Multi-White Tuner / Dimmer. Use with WAV Smart Control™ Receiver.	2-5/8" x 1-5/16" x 3/8"
T-TWAV-WR-120	WAV 120 watt smart LED Receiver. Use with a Wireless Controller	4-1/4" x 2-1/4" x 13/16"
T-WAV-60W-PSR	60 watt AC/DC 2 prong plug-in, 12 volt DC 5 AMP with built in smart LED receiver	7-3/8" x 2-7/8" x 1-1/4"
T-TIL-96	TandemLED Wired Controller	3-9/16" x 1-9/16" x 7/8"