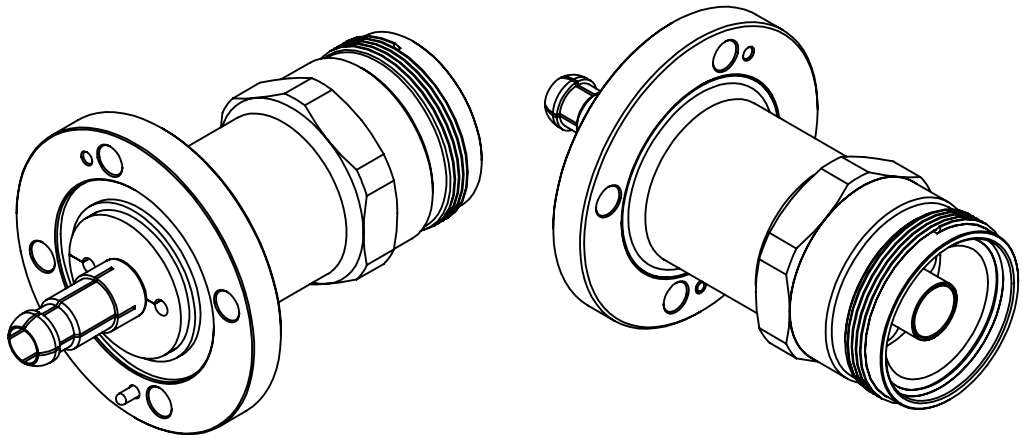


This document, including the design, configuration and mechanical features revealed herein are the sole, confidential and proprietary property of TRU Corporation. Reproduction or use thereof, in whole or part, is prohibited without the prior written consent of TRU Corporation.

REV.	DESCRIPTION	DATE	APPROVED
-	ORIGINAL ISSUE	10/03/13	AM
A	CHANGE PER ECO 4453	02/10/14	TE



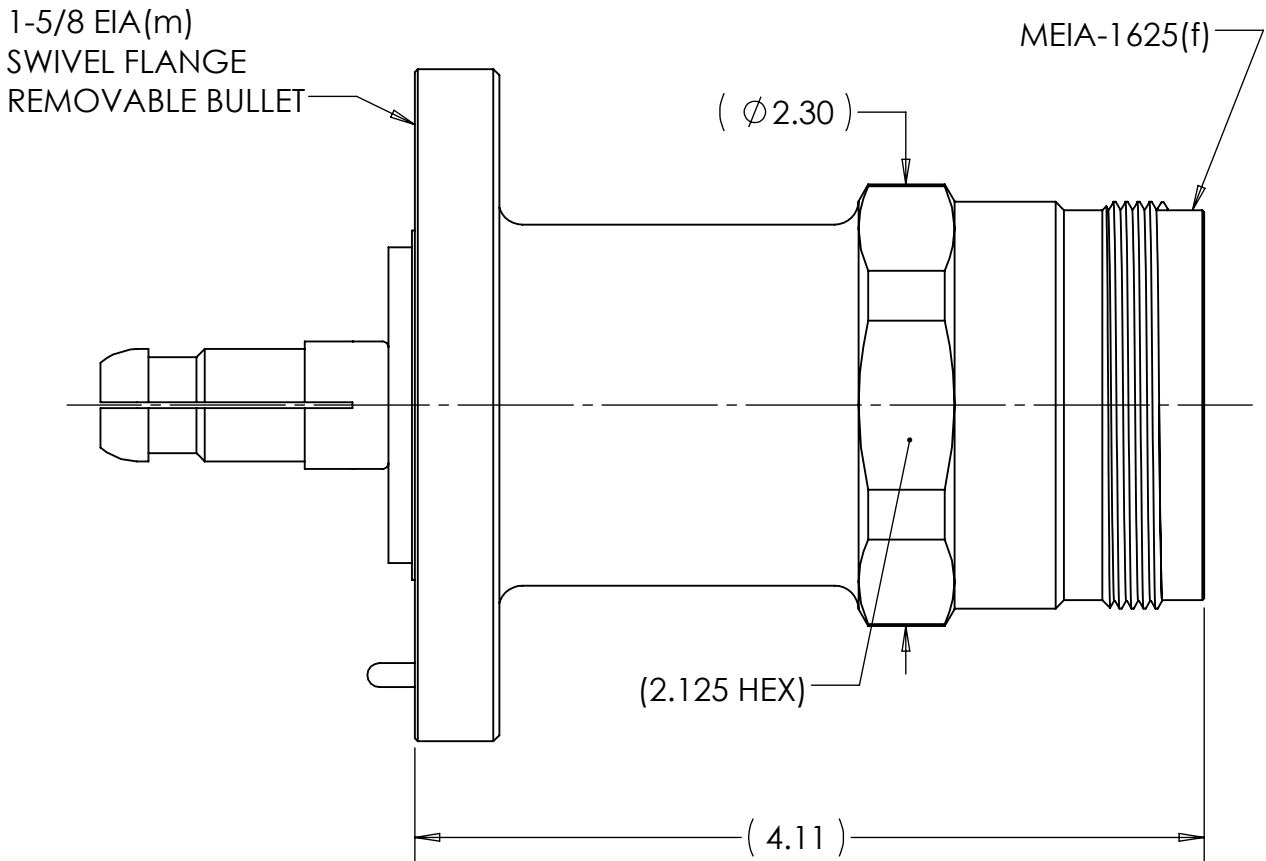
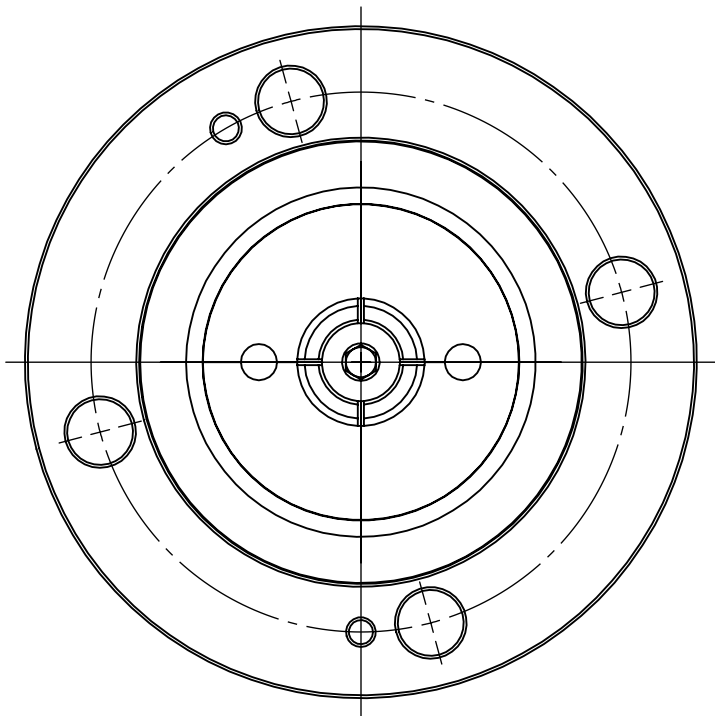
ENGINEERING DATA

ELECTRICAL:
IMPEDANCE: 50 OHMS NOMINAL



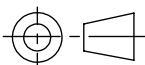
MECHANICAL:
INTERFACE: MEIA-1625(f) per TRU SPEC
1-5/8 EIA per EIA RS-225

MATERIAL:
CONTACTS: BRASS
INSULATORS: PTFE
HOUSING & FLANGE: BRASS
O-RINGS: SILICONE RUBBER

FINISH:
CONTACTS: SILVER PLATED
HOUSING & FLANGE: NICKEL PLATED



- NOTES:
- UNLESS OTHERWISE SPECIFIED; ALL DIMENSIONS ARE FOR REFERENCE ONLY.
 - SUPPLIED WITH THE FOLLOWING ITEMS:
 - QTY 4 5/16-18 X 1.50 HEX HEAD BOLT
 - QTY 4 5/16-18 HEX NUT
 - QTY 8 5/16 LOCKWASHER
 - QTY 1 O-RING

MATERIAL	DO NOT SCALE DRAWING	DRAWN	DATE	 TRU Corporation 245 Lynnfield St, Peabody, MA 01960 <small>EXPERIENCE. TRU INNOVATION.</small>			
		AM	09/30/13				
		ENG APPR.	DATE				
		AM	10/01/13				
COMMENTS:	UNLESS OTHERWISE SPECIFIED: DIMENSIONS ARE IN INCHES TOLERANCES: FRACTIONS: ± 1/64 .XX : ± .01 .XXX: ± .005 ANGLES: ± 1/2° MACHINED SURFACES: 	MFG APPR.	DATE	TITLE: CONNECTOR, COAXIAL 1-5/8 EIA(m) to MEIA-1625(f) ADAPTER			
		OTHER APPR.	DATE				
		THIRD ANGLE PROJECTION 			SIZE B	DWG. NO. TRU-12494	REV A
					CAGE CODE: 92180	SCALE: 1:1	SHEET 1 OF 1