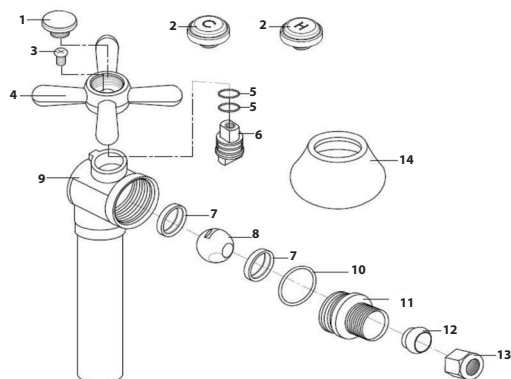




3/8" OD COMP X 1/2" SWT QUARTER-TURN ANGLE SUPPLY STOP VALVE WITH CROSS HANDLE, 5" EXTENSION AND ESCUTCHEON

- Quarter-turn cross style handle
- Angle stop design typically used when water supply pipe comes from the wall
- Includes 5" extension with bell escutcheon plus hot, cold and blank buttons for cross handle
- Lead Law Compliant



PART NO.	FINISH
S42220	Chrome Plated
S4222BN	Brushed Nickel
S4222RB	Oil Rubbed Bronze
S4222WB	Old World Bronze

NO.	PART	MATERIAL
1	Unmarked Top Cap	Brass
2	C & H Top Caps	Brass & Ceramic
3	Screw	Stainless
4	Handle	Zinc
5	O-Ring	Rubber
6	Stem	Brass
7	Seat	Teflon
8	Ball	Brass
9	Body	Brass
10	O-Ring	Rubber
11	End Plug	Brass
12	3/8" Sleeve	Brass
13	3/8" Nut	Brass
14	Flange	Brass

