

GLOWING SQUISHY SLIME

Non-toxic.

Do not eat water beads or place in mouth. Do not insert water beads into nose or ears. If a substantial number of water beads are swallowed, or any water beads are inserted into nose or ears, seek immediate medical attention. Keep and bring this instruction guide and some water beads with you. Not suitable for children under the age of six. Please retain this information for future reference.

Safety and Disposal Instructions for the Water Beads

- Water beads contain Potassium (or Natrium), Hydroxide, Acrylic acid, Polyacrylamide, water and color pigmentation.
- Dispose of water beads in trash.
- Do not put water beads into sink, garbage disposal or drain.
- Water beads are slippery – be sure to pick up spilled water beads from floor.

Important Information

- The slime may stick to clothing, fabric and other surfaces.
- Cover the work surface and wear old clothing.
- If any component spills, clean up immediately.
- Place slime in the mixing container when not in use.

ADDITIONAL INFORMATION FOR GLUE, WATER BEADS, SAND AND SODIUM TETRABORATE

USE ONLY AS INSTRUCTED.

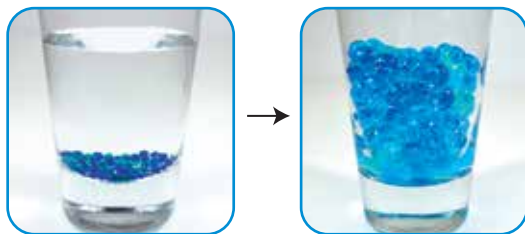
Do not swallow or inhale.
Do not get in eyes, on skin or clothing.
Keep out of reach of small children.

FIRST AID TREATMENT

If swallowed rinse mouth with water. Consult a physician.
If inhaled, move person into fresh air. Consult a physician.
In case of eye or skin contact, rinse well with water. If irritation occurs, seek medical advice.

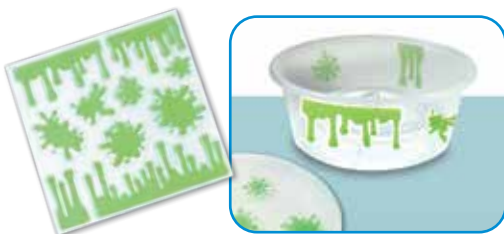
PREPPING YOUR WATER BEADS

Use the test tube to measure 200ml of room temperature water and pour into a cup. Add 1 scoop of Sodium Tetraborate and mix until dissolved. Add 2 scoops of water beads to the mixture and allow them to soak & expand for a few hours.



DECORATE THE CONTAINER

While you wait for your water beads to expand, use the glow in the dark stickers to decorate the outside of your container.



WARNING:

This set contains chemicals that may be harmful if misused. Read cautions on individual containers carefully. Not to be used by children except under adult supervision.

SODIUM TETRABORATE

Not to be used for children under 3 years of age.



CAUTION:

DO NOT EAT WATER BEADS

SLIME TIME



Remove cap & stopper and empty both bottles of glue into the mixing container. *You may need an adult's help to remove stopper.*



Fill the test tube to the 50ml line with room temperature water. Add 1 small scoop of Sodium Tetraborate. Hold test tube firmly while mixing until dissolved.



Add 1 pipette of the solution to the glue. Mix with stirrer. Continue to add and mix 1 pipette of solution at a time (up to 6 pipettes). If slime is still too sticky, add another half pipette of solution and mix with your hands.

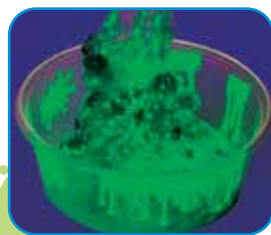
ADDING THE GLOW & SQUISH

Once your slime is created, you can add in fun textures! Hold unopened bag of glow sand under a light to maximize its glow power! Pour in all of the glowing sand and mix with your hands.

Place a small handful of your expanded squishy water beads into the slime. Mix and squish with your hands. If water beads pop out, place back into container and watch them slowly sink into the slime. Be sure to keep track of your water beads while playing.

Pro-tip: If slime is too stiff, add a pipette of tap water to your slime and mix it with your hands. Add more water as needed. Slime will be cloudy when first mixed. It will become more clear as it settles.

NOTE: Save extra water beads for other slime or sensory projects or follow our **Safety and Disposal Instructions**. Close and store slime in the container when not in use.



www.CreativityforKids.com

#6270000 DIY Glowing Squishy Slime
© Faber-Castell USA, Inc.
Cleveland, Ohio 44125
www.fabercastell.com
Designed in USA
Made in China
Non-toxic Safe for children

Need Help?

Call Toll-Free: 800-311-8684
e-mail: consumer@fabercastell.com
Chat or view FAQs & INFO online:
supportcfk.fabercastell.com

