

 Manufactured for:
Dynarex Corporation
10 Glenshaw Street
Orangeburg, NY 10962
USA • www.dynarex.com

Made in Mexico

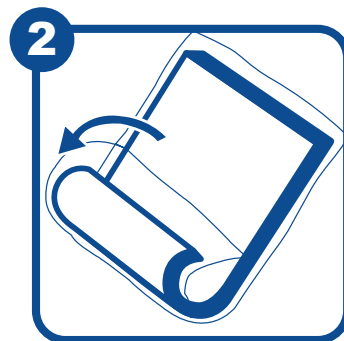
Reorder No. 10434

DynaRest™ @ Home

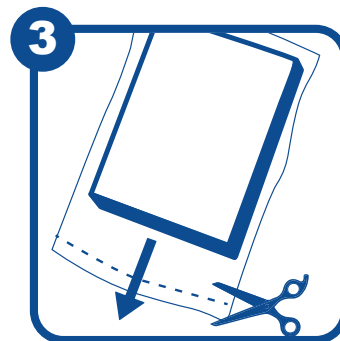
Foam Mattress



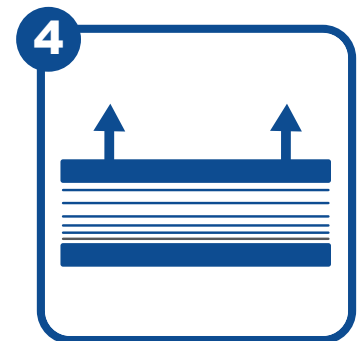
1 Remove the inner compressed mattress from the outer plastic sleeve. Do not use sharp objects when removing the outer plastic sleeve.



2 Unroll the mattress. Find the longer plastic end of the inner bag.



3 Cut the inner bag open at the longer end, making sure not to cut the mattress. Completely remove the mattress from the inner bag and lay on a flat surface.



4 Decompression will begin immediately. Do not use for 60 min to allow the mattress to properly decompress. It may take 48 hours to fully decompress.



SYMBOL GLOSSARY
For an explanation of symbols used in Dynarex packaging, visit dynarex.com/symbols.php

WARNING:
Cancer and Reproductive Harm
www.P65Warnings.ca.gov

R200819