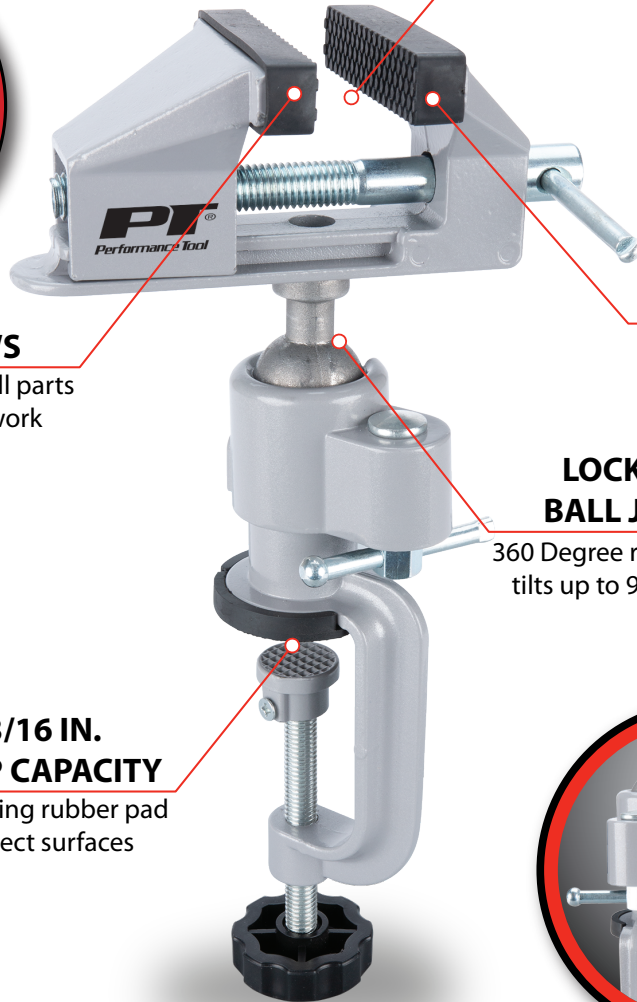


# 3" CLAMP-ON TABLE VISE



**2-1/4 IN. JAW OPENING**

1-3/16 in. Throat depth



**JAW PADS**

To prevent damage to your project

**3 IN. JAWS**

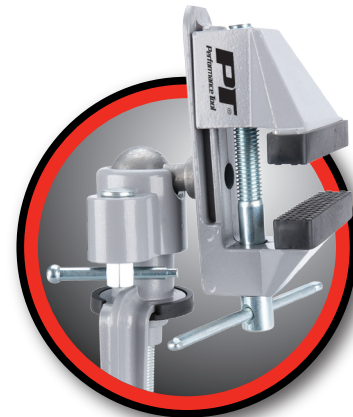
Firmly holds small parts for precision work

**LOCKING BALL JOINT**

360 Degree rotation and tilts up to 90 degrees

**2-3/16 IN. CLAMP CAPACITY**

Non-marring rubber pad to protect surfaces



Item #	Inner	Master	UPC	Packaging
<b>W3906</b>		12	039564105395	Color Box

- Portable clamping vise firmly holds small parts, electronics, crafts and other materials in place for precision work
- Locking swivel joint allows 360 degree rotation and tilts up to 90 degrees for added versatility
- Clamp-on base includes protective non-marring rubber pad to protect surfaces
- Chrome plated spindle and hardware for maximum corrosion resistance
- Includes removable rubber jaw pads for added grip, and preventing damage to your project
- Specifications: Jaw opening: 2-1/4 in. (57mm); Throat Depth: 1-3/16 in. (30mm); Clamp capacity: 2-3/16 in. (55mm); Jaw Width: 3 in. (73.7mm)  
\*Without jaw pads. Will vary slightly with jaw pads installed

